



ROBERT JOHNSON
architects
1808 West Morehead St.
Charlotte, NC 28208
T 704 / 342.1058
F 704 / 342.3043

STAMPS



CONSULTANT



ALBEMARLE SHOPS

CHARLOTTE, NC

PROJECT NUMBER 1943
ISSUE DATE
FOR CONSTRUCTION ONLY 07.01.20

DRAWING DATA
DRAWN BY: GMS
CHECKED BY: BRD/MS

SHEET TITLE
ELECTRICAL PLAN

This drawing is the property of ROBERT JOHNSON ARCHITECTS, INC. and is not to be reproduced or copied in whole or in part. It is to be used for the project and is not to be used on any other project. It is to be returned upon request.

SHEET NUMBER

E-1.1

LIGHT FIXTURE SCHEDULE							
TYPE	MANUFACTURER	CATALOG #	LUMENS/LAMPS	DRIVER/BALLASTS	WATTS	VOLTAGE	DESCRIPTION
A	LEVITON OR EQUAL	KEYED PORCELAIN SOCKET WITH RECEPT. #90848	1-A19 LED RE TRIO LAMP LED, 3500K		100W MAX	120V	UL LISTED KEYED PORCELAIN SOCKET WITH WIRE GUARD AND LED A19 LAMP. SOCKET TO INCLUDE RECEPTACLE. CONTRACTOR TO PROVIDE AND CONNECT TO OCCUPANCY SENSOR.
OA	BK LIGHTING	EL CAPITAN	LUMENS NOT SPECIFIED LED, 2700K	ELECTRONIC	20W	120V	SURFACE MOUNTED LED WET LOCATION WALL SCHEME. COORDINATE MOUNTING ELEVATION WITH ARCHITECTURAL ELEVATIONS PRIOR TO ROUGH-IN WORK. VERIFY COLOR SELECTION WITH ARCHITECT PRIOR TO ORDERING.
OC3	KIM LIGHTING APPROVED EQUAL	AL12-196L-290-35k-7-3 EQUAL MUST SUBMIT ALTERNATE PHOTOMETRICS TO A/JH FOR REVIEW.	2365 LUMENS, LED LED, 3500K	ELECTRONIC	198W	MVOLT	UL LISTED, WET LOCATION, LED FULL CUT OFF AREA LIGHT. PROVIDE PROVISIONS FOR ARM MOUNT. TYPE AS ILLUSTRATED PER PLAN. VERIFY FINISH WITH ARCHITECT PRIOR TO ORDERING.
OC4	KIM LIGHTING APPROVED EQUAL	AL12-196L-290-35k-7-4W EQUAL MUST SUBMIT ALTERNATE PHOTOMETRICS TO A/JH FOR REVIEW.	2373 LUMENS, LED LED, 3500K	ELECTRONIC	198W	MVOLT	UL LISTED, WET LOCATION, LED FULL CUT OFF AREA LIGHT. PROVIDE PROVISIONS FOR ARM MOUNT. TYPE AS ILLUSTRATED PER PLAN. VERIFY FINISH WITH ARCHITECT PRIOR TO ORDERING.
ODI	LITON APPROVED EQUAL	DL340 B45 UE-DUN-127-EMAC	1000 LUMENS, LED, 2700K	ELECTRONIC	15W	120V	UL LISTED, WET LOCATION, 4" SURFACE DOWN LIGHT. VERIFY OPTIONS WITH ARCHITECT PRIOR TO ORDERING. PROVIDE EMERGENCY BATTERY BACKUP (90 MINUTES) WHERE ILLUSTRATED. REMOTE TEST SWITCH IN ACCESSIBLE AREA.
ODP	LITON APPROVED EQUAL	DL340 B2 B45 UE-DUN-127-EMAC PENDANT	1000 LUMENS, LED, 2700K	ELECTRONIC	15W	120V	UL LISTED, WET LOCATION, 4" PENDANT DOWN LIGHT. VERIFY STEM LENGTH WITH ARCHITECT PRIOR TO ORDERING. PROVIDE EMERGENCY BATTERY BACKUP (90 MINUTES) WHERE ILLUSTRATED. REMOTE TEST SWITCH IN ACCESSIBLE AREA.
PCLE	SHAKESPERE WHITLEY GENERAL STRUCTURES	AS SERIES RT-SERIES CP-SERIES	N/A	N/A	N/A	N/A	2" ROUND TAPERED FIBERGLASS POLE WITH ANCHOR BASE. BRONZE FINISH, WET LOCATION LABEL, WITH PROVISIONS FOR ARM MOUNTING. MOUNT ON 3" BASE.
ETHONIA MILE COMPASS	CM LED SERIES SQRU SERIES CC SERIES		LED 2x4 W/WEDGE	ELECTRONIC	1.5W FACE 14W	MVOLT	WALL MOUNTED COMBO EMERGED EXIT SIGN WITH POLYCARBONATE HOUSING WITH SELF-CONTAINED POWERPACK FOR 90MIN OPERATION. NICAD BATTERY. VERIFY COLOR HOUSING, RED LETTERS, (VERIFY COLOR WITH ARCHITECT PRIOR TO ORDERING).
ACUTY MULE SURELITES	AFF MARKLED SERIES HEL2 SERIES		TWO LEDS INCLUDED		10W MAX	120V	EXTERIOR EMERGENCY LIGHT WITH BATTERY BACKUP, TWO LAMP/LED STRIPS AND UL WET LABEL, BLACK FINISH, & 90 MINUTES OF CONTINUOUS OPERATION & SELF-DIAGNOSTICS.

FIXTURE NOTES:

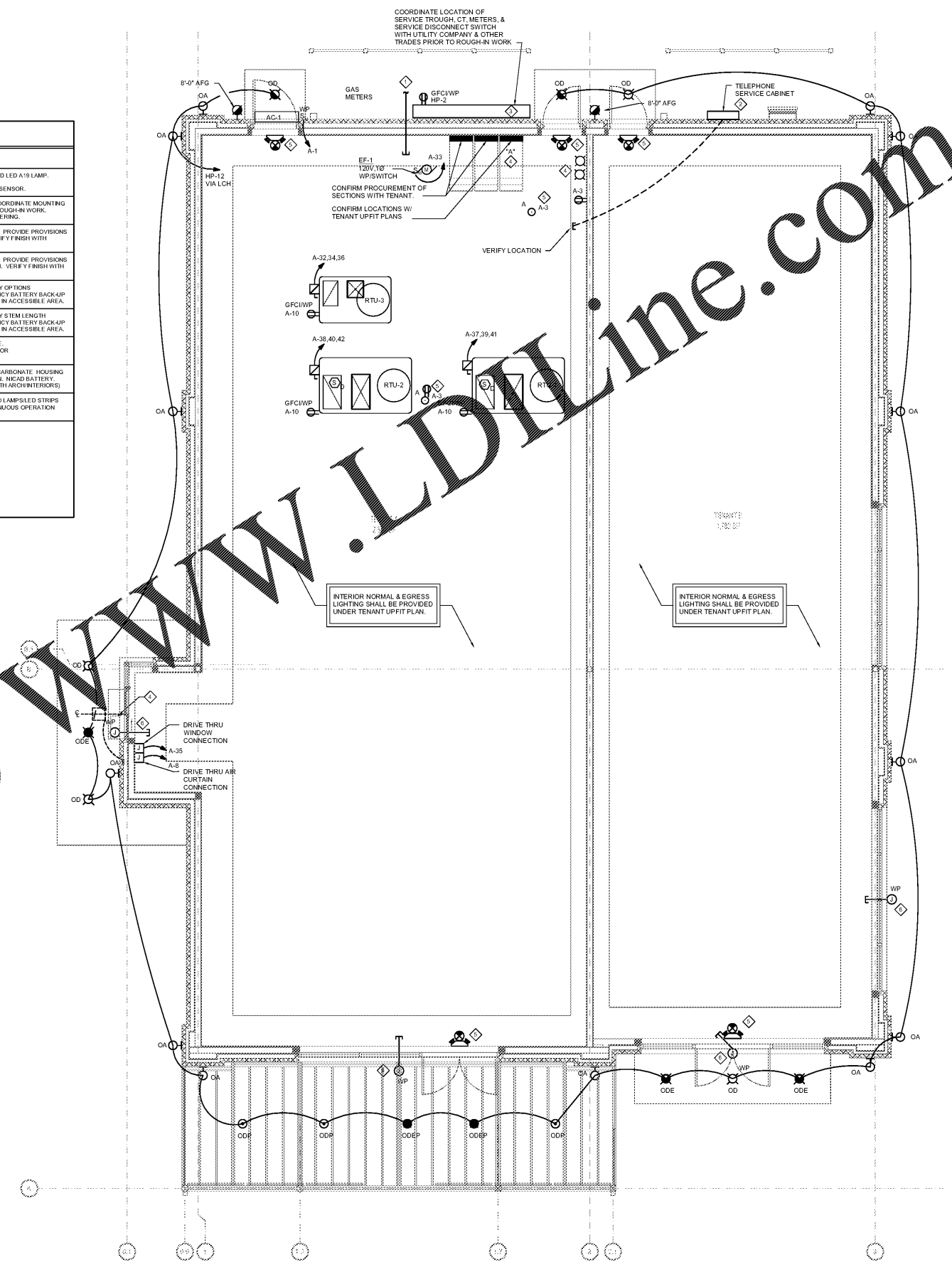
- SUBSTITUTIONS MUST BE EQUAL IN CONSTRUCTION, FINISH, ENERGY USAGE AND PHOTOMETRY. ALL SUBSTITUTIONS SHALL BE SUBMITTED TO THE ENGINEER, WITH CUTSHEETS AND PHOTOMETRY. THE ENGINEER MUST RECEIVE THESE WITH TIME ALLOWED TO REVIEW AND ISSUE A WRITTEN APPROVAL BACK TO THE SUBMITTING PARTY TEN (10) DAYS PRIOR TO BID. SUBSTITUTED FIXTURES SHALL BE LISTED SEPARATELY AND UNIT PRICED AT TIME OF BID, SO THAT THE ENGINEER AND OWNER CAN MAKE AN INFORMED DECISION. NO SUBSTITUTIONS WILL BE CONSIDERED AFTER THE 10 DAY PRIOR BID PROCESS ENDS.
- SEE ARCHITECTURAL ELEVATION PLANS FOR EXACT FIXTURE LOCATIONS.

MECH/ELEC SCHEDULE					
ITEM	WATTS	MCA	MCCP	VOLTS	DISCONNECT
AC-1	1/2 HP	-	-	120V/0	SWAMP
EF-1	(760.8)	-	-	120V/0	SWAMP
EUH-1	(3300)	-	-	208V/3	SWAMP
RTU-1 & 2	46.1	60	-	208V/3	SWAMP
RTU-3	22.9	33	-	208V/3	SWAMP

NOTE:

- EF-1 TO COORDINATE WITH MC AND PROVIDE ELECTRICAL DISCONNECTS FOR PER MANUFACTURERS STATED DATA PLATES FOR A COMPLETE AND OPERATIONAL MECHANICAL SYSTEM.

- KEYED NOTES THIS SHEET**
- 3-SPARE 1" TO BE RAN THROUGH FOUNDATION WALL OUT REAR OF BUILDING. ALL CONDUITS SHALL BE TERMINATED ABOVE CEILING. VERIFY ALL LOCATIONS FOR STUB UP WITH TENANT'S REPRESENTATIVE.
 - CONTRACTOR SHALL COORDINATE THE LOCATION OF 24" X 24" X 8" (OR AS DIRECTED BY UTILITY CO) TELEPHONE CABINET WITH OWNER / ARCHITECT PRIOR TO ANY ROUGH IN WORK. PROVIDE 2" CONDUITS WITH PULLSTRINGS FROM BUILDING'S MAIN POINT OF ENTRY TO SERVICE POINT WITHIN THE PREMISES. LOCATION POINT SHALL BE COORDINATED WITH UTILITY COMPANY PRIOR TO SITE WORK. PROVIDE 8-DEDICATED PHONE LINES TO TENANT AND 2" CONDUIT WITH PULLSTRING TO PHONE BOARD LOCATION AS INDICATED PER TENANT PLAN.
 - APPROXIMATE LOCATION OF ELECTRICAL SERVICE. CONTRACTOR SHALL PROVIDE CT CABINET AND METER BASE AS REQUIRED PER LOCAL UTILITY COMPANY STANDARDS.
 - COORDINATE WITH TENANT UPFIT PLANS FOR LOCATION.
 - FOR SHELL PERMIT ONLY. COORDINATE WITH TENANT UPFIT PLANS.
 - PROVIDE WEATHERPROOF CONDUIT/BOX FOR SIGN PROVISIONS. COORDINATE WITH ARCHITECTURAL ELEVATIONS.



ELECTRICAL FLOOR PLAN
SCALE: 1/4" = 1'-0"

Order Plans @