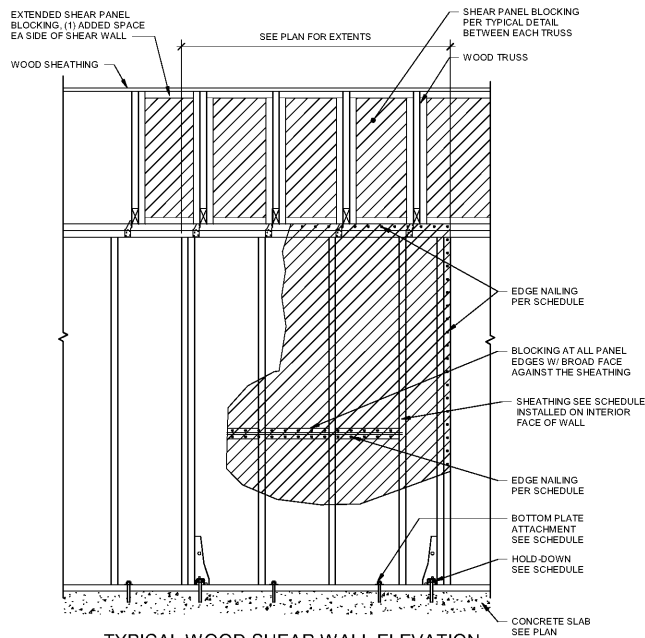


TYPICAL WOOD FRAMING ELEVATION

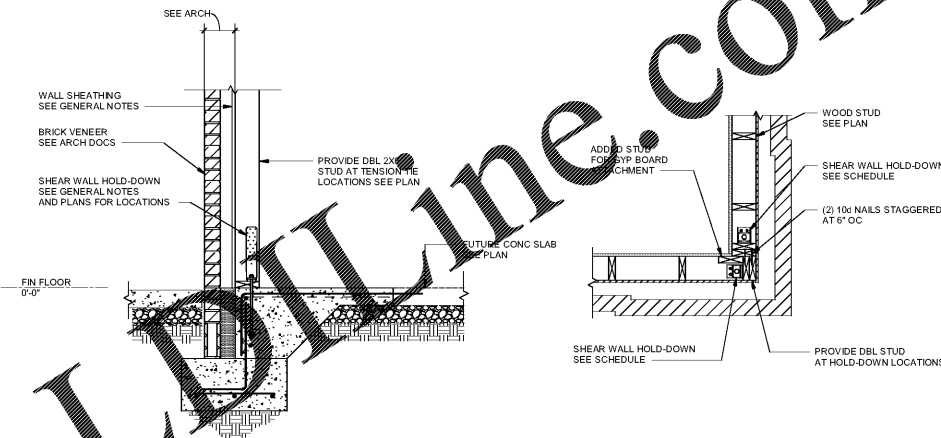
- NOTES:
1. SEE SHEAR WALL ELEVATION FOR ADDITIONAL REQUIREMENTS AT SHEAR WALLS.



TYPICAL WOOD SHEAR WALL ELEVATION

- SCALE: 3/4" = 1'-0"
WOOD SHEAR WALL ELEVATION NOTES:
1. FOUNDATION ANCHOR BOLTS SHALL HAVE 1/4"X3"X3" PLATE WASHERS TYP.
2. SEE GENERAL NOTES FOR SHEATHING REQUIREMENTS.

SHEAR WALL SCHEDULE							
MARK	FASTENER SPACING AT PANEL EDGES	FASTENER SPACING IN FIELD	BOTTOM PLATE ATTACHMENT	JAMB STUD NUMBER AND TYPE	HOLD DOWN TYPE EACH END	HOLD DOWN ANCHORAGE	SHEATHING
SW1	8d NAILS AT 6" OC	8d NAILS AT 12" OC	1/2" DIA ANCHOR RODS W/ 1/4" X 3" X 3" PLATE WASHER W/ 1/2" MIN EMBED AT 32" OC	(3) 2X6	SIMPSON HDU8-SDS2.5	5/8" DIA THREADED ROD SET IN EPOXY MIN 12" EMBEDMENT INTO CONCRETE	23/32 OSB APA RATING: (STRUCTURAL: 48/24 SPAN RATING)
SW2	10d NAILS AT 2" OC	8d NAILS AT 6" OC	1/2" DIA ANCHOR RODS W/ 1/4" X 3" X 3" PLATE WASHER W/ 1/2" MIN EMBED AT 16" OC	(5) 2X6	SIMPSON HDU14-SDS2.5	5/8" DIA THREADED ROD SET IN EPOXY MIN 12" EMBEDMENT INTO CONCRETE	(2) LAYERS 23/32 OSB APA RATING: (STRUCTURAL: 48/24 SPAN RATING)



SHEAR WALL HOLD DOWN DETAIL

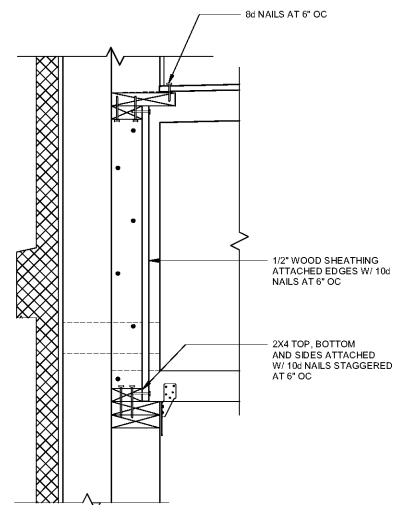
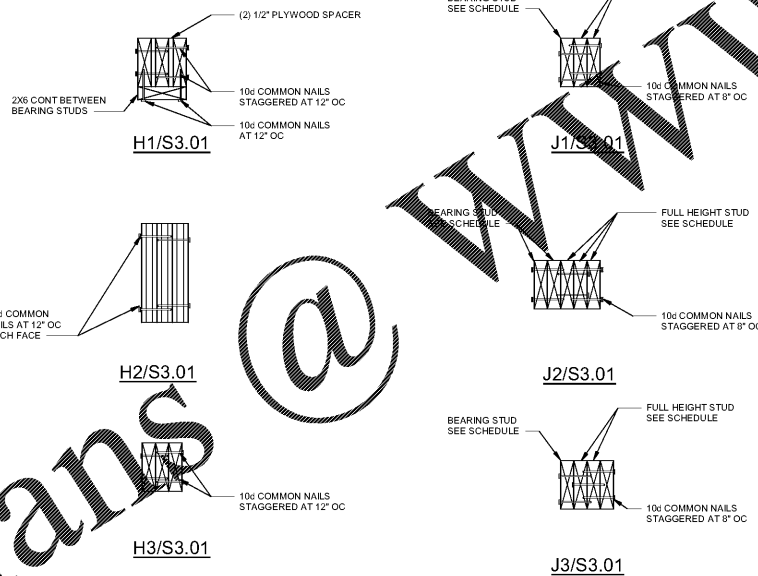
TYPICAL CORNER FRAMING DETAIL

WOOD HEADER JAMB AND SILL SCHEDULE							
OPENING DESIGNATION	HEADER			FULL HEIGHT STUDS	JAMB		SILL
	SIZE	MAX OPENING	DETAIL		BEARING STUDS	DETAIL	
H1	(3) 2X6	3'-6"	H1/S3.01	(2) 2X6	(1) 2X6	J1/S3.01	N/A
H2	(3) 1 3/4"X1 1/4" LVL	12'-8"	H2/S3.01	(5) 2X6	(1) 2X6	J2/S3.01	N/A
H3	(3) 1 3/4"X1 1/4" LVL	14'-8"	H2/S3.01	(6) 2X6	(1) 2X6	J2/S3.01	N/A
H4	(3) 1 3/4"X1 1/4" LVL	14'-8"	H2/S3.01	(6) 2X6	(2) 2X6	J2/S3.01	N/A
H5	(3) 1 3/4"X20" LVL	16'-0"	H2/S3.01	(6) 2X6	(3) 2X6	J2/S3.01	N/A
H6	(3) 2X8	6'-0"	H3/S3.01	(4) 2X6	N/A	J3/S3.01	N/A

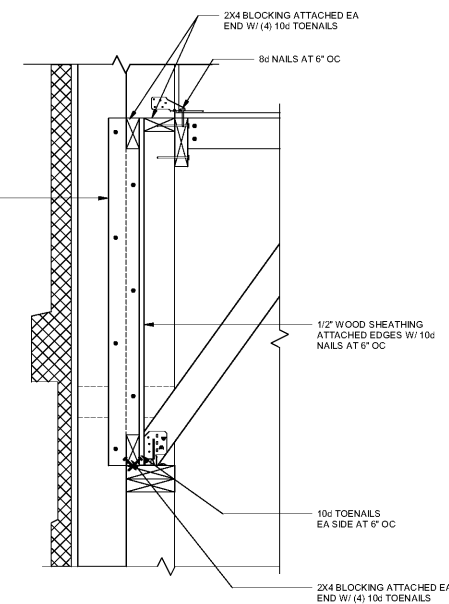
- NOTES:
1. SEE TYPICAL WOOD FRAMING ELEVATION FOR WALL CONFIGURATION.

WOOD CONNECTION SCHEDULE			
TYPE	MINIMUM DIAMETER	MINIMUM LENGTH	NOTES
8d NAILS	0.131"	2 1/2"	SEE NOTE 1
10d NAILS	0.148"	3"	SEE NOTE 1
16d NAILS	0.162"	3 1/2"	SEE NOTE 1
#8 SCREW	0.164"	2 1/2"	N/A
#10 SCREW	0.190"	3"	N/A

- NOTES:
1. NAIL/SCREW SIZE SHOWN ABOVE IS MINIMUM UNLESS NOTED OTHERWISE.
2. ALL SIMPSON HARDWARE SHALL BE FULLY ATTACHED WITH MAXIMUM NUMBER AND SIZE FASTENERS ALLOWED UNLESS NOTED OTHERWISE.



TRUSS BEARING ON WALL



TRUSS PARALLEL WITH WALL

TYPICAL SHEAR PANEL DETAILS



ROBERT JOHNSON
architects
1818 West Morehead St
Charlotte, NC 28208
T 704 / 342.1058
F 704 / 342.3043

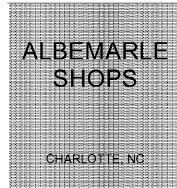
STAMPS



CONSULTANT



NC Firm No.: P-1415



PROJECT NUMBER 1943
ISSUE DATE
FOR CONSTRUCTION ONLY 07.01.20

DRAWING DATA
DRAWN BY: JMK
CHECKED BY: JPN

SHEAR WALL DETAILS

This drawing is the property of ROBERT JOHNSON ARCHITECTS, INC. and is not to be reproduced or copied in whole or in part. It is only to be used for the project and site specifically identified herein, and is not to be used on any other project. It is to be returned upon request.

S3.01