

FINISH SYMBOLS & TYPES		
KEY NAME	DESCRIPTION	MANUFACTURER
OPEN-1	OPEN CEILING	EXPOSED STRUCTURE, CONDUIT, UNISTRUT, BRACING, PLUMBING PIPES, MECHANICAL, INSULATION, ETC.
PT-1	PAINT	SHERWIN WILLIAMS "URBANE BRONZE" SW 7046

- GENERAL NOTES**
- CONTACT ARCHITECT IMMEDIATELY SHOULD ANY DISCREPANCIES OCCUR VIA CONSTRUCTION DOCUMENTS OR FINISHING.
 - ALL PAINT SHALL BE SHERWIN WILLIAMS PAINTS UNLESS OTHERWISE NOTED.
 - ALL TRANSITIONS AT DOORS TO RECEIVE THRESHOLDS (TO BE ADA COMPLIANT).
 - CONTROL JOINTS ARE TO BE PLACED AT ALL COLUMN LINES. PATTERN JOINTS TO BE APPLIED AS REQUIRED BY DRAWINGS.
 - INSTALL ALL MATERIALS IN STRICT ACCORDANCE WITH MANUFACTURER'S INSTRUCTIONS TO ENSURE ALL APPLICABLE WARRANTIES AND PROPER FINISH OUT.
 - ALL STAINED OR EXPOSED CONCRETE TO RECEIVE CLEAR SEALANT (2 COATS).
 - G.C. TO COORDINATE ALL FINISH FLOOR DIMENSIONS W/ FLOOR PLAN & DETAILS. CONTACT THE ARCHITECT IMMEDIATELY IF ANY DISCREPANCIES OCCUR.
 - ALL INTERIOR FLOOR FINISHES TO COMPLY WITH NCBC SECTION 804.
 - ALL WALL & CEILING FINISH MATERIALS TO COMPLY WITH NCBC SECTION 803 AND TABLE 803.11.

FINISH SCHEDULE						
NO.	ROOM NAME	FLOOR	BASE	CEILING	WALL	NOTES
100	TENANT A	N/A	N/A	OPEN-1	GYP SUM BOARD	TAPED AND FINISHED TO LEVEL 5
101	TENANT B	N/A	N/A	OPEN-1	GYP SUM BOARD	TAPED AND FINISHED TO LEVEL 5

MISCELLANEOUS METALS FINISH SCHEDULE				
METAL	GENERAL AREA	FINISH	NOTES	
ROOF LADDER	NORTH ELEVATION	PT-1		
EXPOSED CMU BLOCK	EXTERIOR DUMPSTER	PT-1		
EXPOSED DUMPSTER STEEL	EXTERIOR DUMPSTER	PT-1		
DUMPSTER BOLLARDS	EXTERIOR DUMPSTER	PT-1		

DOOR SCHEDULE												
NO.	ROOM NAME	SIZE			DOOR TYPE	MATERIAL	FINISH	FRAME		PANIC HDW.	HDW. SET	REMARKS
		W	H	T				MATERIAL	FINISH			
100	TENANT A - ENTRY	PR1 3'-0"	7'-0"	13'-4"	A	ALUMINUM	DARK BRONZE	F2	ALUMINUM	DARK BRONZE	YES	⓪
101	TENANT B - ENTRY	PR1 3'-0"	7'-0"	13'-4"	A	ALUMINUM	DARK BRONZE	F2	ALUMINUM	DARK BRONZE	YES	⓪
102	TENANT B - REAR EXIT	3'-0"	7'-0"	13'-4"	B	HOLLOW METAL	PT-1	F1	HOLLOW METAL	PT-1	NO	⓪
103	TENANT A - REAR ENTRY	3'-0"	7'-0"	13'-4"	A	ALUMINUM	DARK BRONZE	F1	HOLLOW METAL	PT-1	YES	⓪
104	TENANT A - REAR EXIT	3'-4"	7'-0"	13'-4"	B	HOLLOW METAL	PT-1	F1	HOLLOW METAL	PT-1	NO	⓪

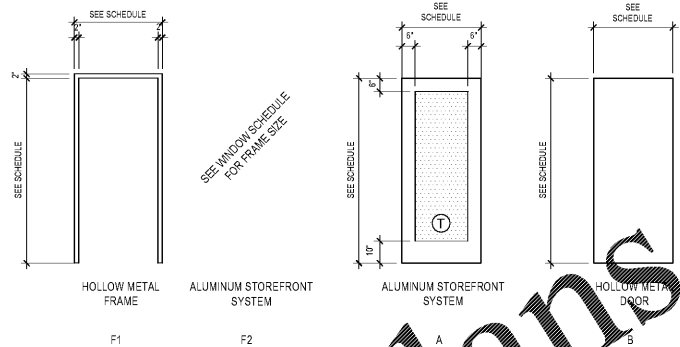
- NOTES**
- HARDWARE SET TYPES ARE SHOWN NUMBERED ACCORDING TO RELATIVE FUNCTION. THE CONTRACTOR IS TO SUBMIT SHOP DRAWINGS OF EACH SET FOR ARCHITECT APPROVAL.
 - ALL DOOR HARDWARE SHALL BE A.D.A. COMPLIANT & TO COMPLY WITH THE LATEST ICC/ANSI A117.1.
 - GENERAL CONTRACTOR TO COORDINATE WITH ARCHITECT FOR ALL STOREFRONT GLASS COLORS.
 - ALL LOCK SETS TO HAVE HARDWARE REMOVAL CORES FOR MASTER KEYING SYSTEM.

HARDWARE SETS				
NO.	ITEM	DESCRIPTION	MANUFACTURER	FINISH
6	HANGING DEVICES	TH2314MPB91	MCKINNEY	630
1	SECURING DEVICES (ACTIVE LEAF)	CD354A-NL-OP LBR PANIC DEVICE	VON DUPRIN	628/630
1	SECURING DEVICES (INACTIVE LEAF)	CD3547A-EO LBR PANIC DEVICE	VON DUPRIN	628/630
3	SECURING DEVICES (ACTIVE LEAF)	C607 7-PIN CORE COMBINATION "A" KEYWAY	FALCON LOCK	626
1	SECURING DEVICES (ACTIVE LEAF)	KB609-2 CUT CONTROL KEY "A" KEYWAY	FALCON LOCK	---
9	SECURING DEVICES (ACTIVE LEAF)	KB632-2 CUT USE KEY "A" KEYWAY	FALCON LOCK	---
1	SECURING DEVICES (ACTIVE LEAF)	C953 7-PIN RM CYLINDER HOUSING	FALCON LOCK	626
2	SECURING DEVICES (ACTIVE LEAF)	C987 7-PIN MORTISE CYLINDER HOUSING	FALCON LOCK	626
2	SECURING DEVICES (ACTIVE LEAF)	A08794-003 ADJUSTABLE RING, MORTISE CYL. 5/16-13/32	FALCON LOCK	626
2	OPERATING TRIM	108 DOOR PULL HANDLE	ROCKWOOD	630
2	CLOSING DEVICES	8916 DOOR CLOSER 8916 AF89P	DORMA	689
2	STOPS AND HOLDERS	473 DOOR STOP W/ HOOK	ROCKWOOD	626
2	ACCESSORIES	DOOR SWEEP 18062CNB36	PEMKO	A
1	THRESHOLD	325 HALF SADDLE THRESHOLD	NATIONAL GUARD	---
1	SIGN	VINYL SIGN: "THIS DOOR MUST REMAIN UNLOCKED WHEN BUILDING IS OCCUPIED"	NATIONAL GUARD	---

HARDWARE SET ②				
NO.	ITEM	DESCRIPTION	MANUFACTURER	FINISH
3	HANGING DEVICES	TH2314MPB91 HINGE MACRO BEARING 4.5 X 4.5	MCKINNEY	630
1	SECURING DEVICES	C607 7-PIN CORE COMBINATION "A" KEYWAY	FALCON LOCK	626
1	SECURING DEVICES	JD 2000L-03C AUTO LOCKING DOOR ALARM, IC: NO CTR INCLUDES MORTISE CYLINDER	SUR-LOCK	---
1	CLOSING DEVICES	8916 DOOR CLOSER 8916 AF89P	DORMA	689
1	PROTECTIVE TRIM UNITS	K1050 B4E KICKPLATE 10" X 34"	ROCKWOOD	630
1	ACCESSORIES	137NA WEATHERSTRIP 17" 36" X 84"	NATIONAL GUARD	A
1	ACCESSORIES	DOOR SWEEP 18062CNB36	PEMKO	A
1	MISCELLANEOUS ITEMS	DS1000 DOOR SCOPE	SECURITY PRODUCTS	SILVER
1	MISCELLANEOUS ITEMS	MCV3099WHGL DOOR BELL	NUTONE	AS SELECTED

HARDWARE SET ③				
NO.	ITEM	DESCRIPTION	MANUFACTURER	FINISH
3	HANGING DEVICES	TH2314MPB91 HINGE MACRO BEARING 4.5 X 4.5	MCKINNEY	630
1	SECURING DEVICES	CD354A-NL-OP PANIC DEVICE	VON DUPRIN	628/630
2	SECURING DEVICES	C607 7-PIN CORE COMBINATION "A" KEYWAY	FALCON LOCK	626
1	SECURING DEVICES	KB609-2 CUT CONTROL KEY "A" KEYWAY	FALCON LOCK	---
9	SECURING DEVICES	KB632-2 CUT USE KEY "A" KEYWAY	FALCON LOCK	---
1	SECURING DEVICES	C953 7-PIN RM CYLINDER HOUSING	FALCON LOCK	626
1	SECURING DEVICES	C987 7-PIN MORTISE CYLINDER HOUSING W/ AR CAM	FALCON LOCK	626
1	SECURING DEVICES	A08794-003 ADJUSTABLE RING, MORTISE CYL. 5/16-13/32	FALCON LOCK	626
1	OPERATING TRIM	108 DOOR PULL HANDLE	ROCKWOOD	630
1	CLOSING DEVICES	8916 DOOR CLOSER 8916 AF89P	DORMA	689
1	STOPS AND HOLDERS	473 DOOR STOP W/ HOOK	ROCKWOOD	626
1	THRESHOLD	325 HALF SADDLE THRESHOLD	NATIONAL GUARD	---
1	SIGN	VINYL SIGN: "THIS DOOR MUST REMAIN UNLOCKED WHEN BUILDING IS OCCUPIED"	NATIONAL GUARD	---

HARDWARE SET ④				
NO.	ITEM	DESCRIPTION	MANUFACTURER	FINISH
3	HANGING DEVICES	TH2314MPB91 HINGE MACRO BEARING 4.5 X 4.5	MCKINNEY	630
1	SECURING DEVICES	C607 7-PIN CORE COMBINATION "A" KEYWAY	FALCON LOCK	626
1	SECURING DEVICES	JD 2000L-03C AUTO LOCKING DOOR ALARM, IC: NO CTR INCLUDES MORTISE CYLINDER	SUR-LOCK	---
1	CLOSING DEVICES	8916 DOOR CLOSER 8916 AF89P	DORMA	689
1	PROTECTIVE TRIM UNITS	K1050 B4E KICKPLATE 10" X 40"	ROCKWOOD	630
1	ACCESSORIES	137NA WEATHERSTRIP 17" 42" X 84"	NATIONAL GUARD	A
1	ACCESSORIES	DOOR SWEEP 18062CNB36	PEMKO	A
1	MISCELLANEOUS ITEMS	DS1000 DOOR SCOPE	SECURITY PRODUCTS	SILVER
1	MISCELLANEOUS ITEMS	MCV3099WHGL DOOR BELL	NUTONE	AS SELECTED



1 FRAME TYPES
A-7.0 Scale: NTS

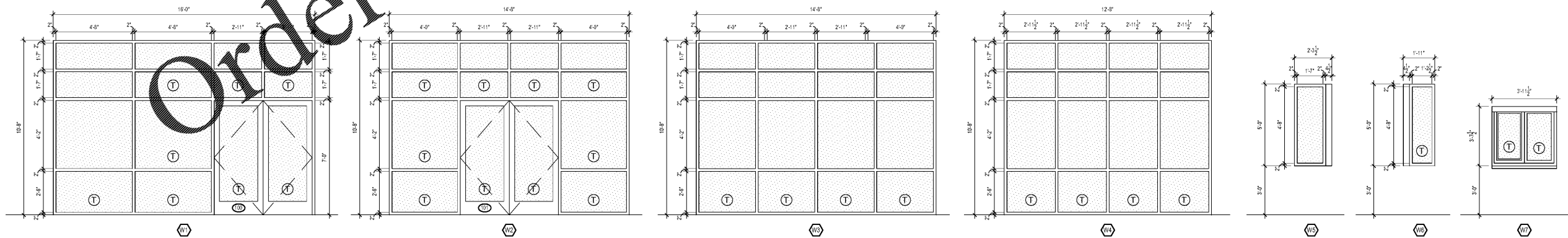
2 DOOR TYPES
A-7.0 Scale: NTS

WINDOW TYPES

TEMPERED GLAZING

NOTES

- LOCATIONS TO BE COORDINATED WITH ARCHITECTURAL PLANS.
- MANUFACTURER TO BE KAWNEER OR APPROVED EQUAL.
- FIELD VERIFY DIMENSIONS AND OPENINGS PRIOR TO FABRICATION.
- ALL GLAZING SHALL BE 1" INSULATED CLEAR GLASS WITH LOW-E COATING - GC TO USE SOLARBAND XL70 AS THE BASIS OF DESIGN.



3 WINDOW TYPES
A-7.0 Scale: 3/8" = 1'-0"

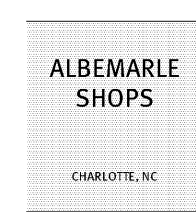
NOTE: READY ACCESS 275 SERIES WINDOW W/ SPLIT TRANSOM, 47 1/2" W X 43 1/2" H - W/ MANUAL OPER/ELECTRONIC RELEASE



ROBERT JOHNSON
architects
1808 West Morehead St.
Charlotte, NC 28208
7704 / 342.1058



CONSULTANT



PROJECT NUMBER 1943
ISSUE DATE
FOR CONSTRUCTION ONLY 07.01.20

DRAWING DATA
DRAWN BY: EJM/BJM
CHECKED BY: TH

SHEET TITLE
DOOR & WINDOW SCHEDULES

This drawing is the property of ROBERT JOHNSON ARCHITECTS, INC. and is not to be reproduced or copied in whole or in part. It is only to be used for the project and site specifically identified herein and is not to be used on any other project. It is to be returned upon request.

SHEET NUMBER

A-7.0