



ROBERT JOHNSON
architects
1808 West Morehead St.
Charlotte, NC 28208
7704 / 342.1058

STAMPS



CONSULTANT

ALBEMARLE
SHOPS

CHARLOTTE, NC

PROJECT NUMBER 1943
ISSUE DATE
FOR CONSTRUCTION ONLY 07.01.20

DRAWING DATA
DRAWN BY: EH/BM
CHECKED BY: TH

SHEET TITLE
MOCK UP PANEL
ELEVATION

This drawing is the property of ROBERT JOHNSON ARCHITECTS, INC. and is not to be reproduced or copied in whole or in part. It is only to be used for the project and site specifically mentioned herein and is not to be used on any other project. It is to be returned upon request.

SHEET NUMBER
A-4.2

KEYED NOTES

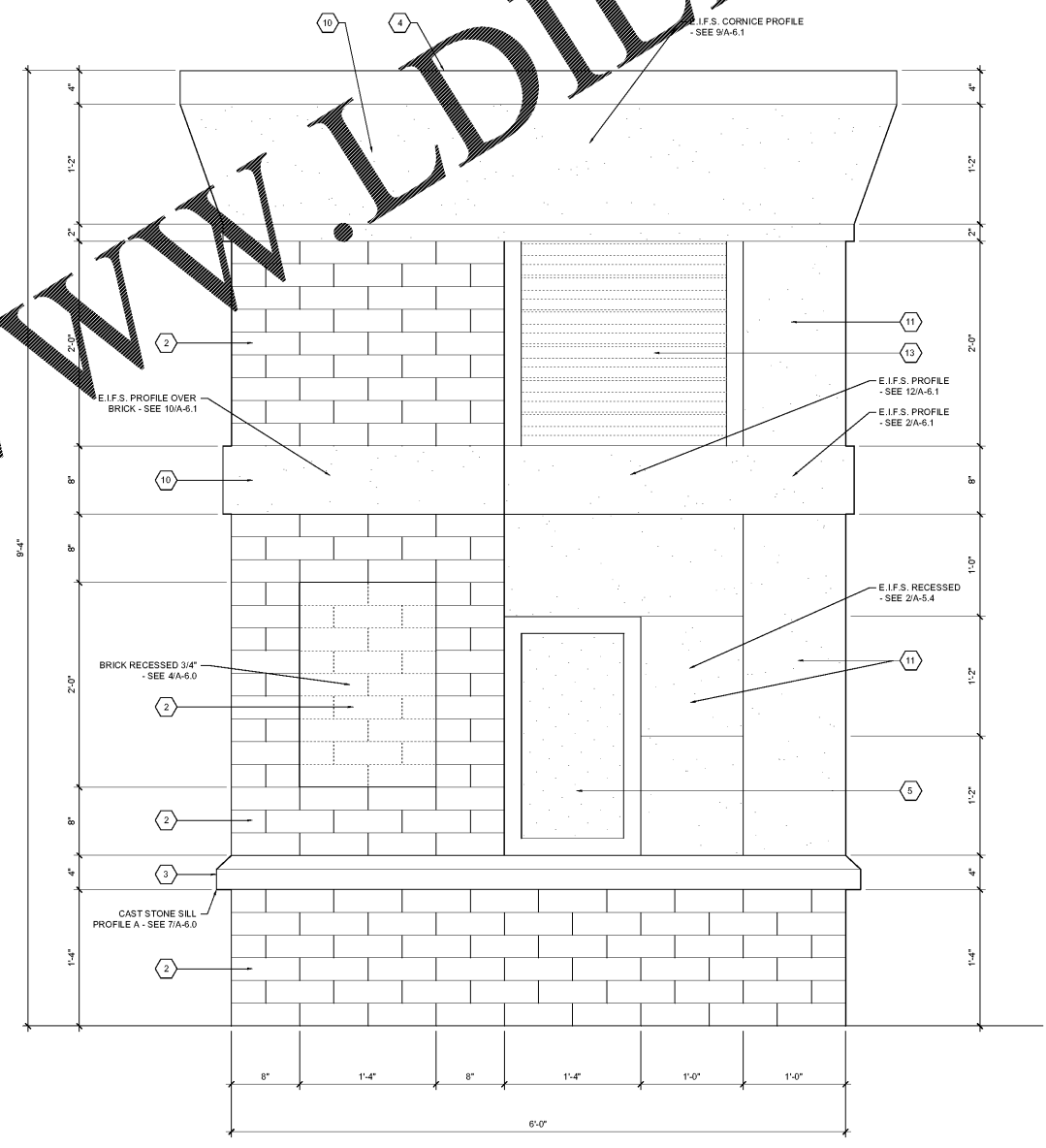
- | | |
|---|--|
| 1 BRICK VENEER - GENERAL SHALE, MODULAR BRICK, "GRAYSTONE VELOUR" | 14 HOSE BIB - SEE PLUMBING |
| 2 BRICK VENEER - GENERAL SHALE, MODULAR BRICK, "CHESTNUT VELOUR" | 15 ROOF ACCESS LADDER WITH SECURITY LADDER GUARD DOOR AND WALK-THRU - COLOR TO MATCH DARK BRONZE |
| 3 CAST STONE SILL - READING ROCK, "CRYSTAL WHITE" | 16 SIGNAGE SHOWN FOR REFERENCE ONLY - ALL SIGNAGE TO BE PERMITTED UNDER SEPARATE COVER BY TENANT - GC TO PROVIDE BLOCKING AND POWER FOR ALL FUTURE SIGNAGE LOCATIONS - TYPICAL STARBUCKS SIGNAGE |
| 4 PREFINISHED ALUMINUM METAL COPING - FIRESTONE, COLOR: DARK BRONZE | 17 PERFORATED POWDER COATED METAL UTILITY SCREEN - COLOR TO MATCH DARK BRONZE |
| 5 ALUMINUM STOREFRONT SYSTEM - KAWNEER OR APPROVED EQUAL - COLOR/FINISH TO BE DARK BRONZE | 18 6X6 STAINED WOOD POST - STAIN TO MATCH STANDING SEAM METAL ROOFING |
| 6 PREFABRICATED ALUMINUM CANOPY - MAPES OR APPROVED EQUAL - COLOR/FINISH TO BE DARK BRONZE | 19 AWNEX "EVENING FENCE" - FINISH: POWDER COATED STARBUCKS BLACK, #RAL 7021 W/ NO FINISH ON THE WOOD; 42" HIGH |
| 7 PREFINISHED METAL SCUPPER/GUTTER & DOWNSPOUT - FIRESTONE, COLOR: DARK BRONZE | 20 HOLLOW METAL DOOR AND FRAME - PAINTED SHERWIN WILLIAMS "URBANE BRONZE" SW 7048 |
| 8 DECORATIVE LIGHT FIXTURE - COLOR TO MATCH STOREFRONT - SEE ELECTRICAL | 21 ELECTRICAL PANELS AND TROUGH - GC TO PROVIDE UNISTRUT AS REQUIRED - SEE ELECTRICAL |
| 9 READY ACCESS - JTS SERIES WINDOW W/ SPLIT TRANSOM, 47-1/2" X 43-1/2" H - W/ MANUAL OPEN/ ELECTRONIC RELEASE | 22 GAS METERS - SEE PLUMBING |
| 10 EIFS - DRYVIT OR APPROVED EQUAL, COLOR: SHERWIN WILLIAMS SW 7019 "GAUNTLET GRAY" | 23 E.I.F.S. CONTROL JOINT / SCORE LINE |
| 11 EIFS - DRYVIT OR APPROVED EQUAL, COLOR: SHERWIN WILLIAMS SW 7570 "EGRET WHITE" | 24 EMERGENCY LIGHT FIXTURE - SEE ELECTRICAL |
| 12 TEE PANEL STANDING SEAM METAL ROOF - BERRIDGE OR APPROVED EQUAL - COLOR: DARK BRONZE | 25 TELEPHONE SERVICE CABINET - SEE ELECTRICAL |
| 13 HR-16 METAL PANEL - BERRIDGE OR APPROVED EQUAL - COLOR: DARK BRONZE | |

NOTE:
ARCHITECT TO PROVIDE DIGITAL MATERIAL BOARD FOR COLORED ELEVATIONS. THESE WILL DEPICT COLORS AND MATERIALS FOR THE EXTERIOR ELEVATIONS.

NOTE:
ALL BRICK CONTROL JOINTS TO BE PLACED ON INSIDE CORNER OF PIERS AS REQUIRED.

MOCK-UP PANEL GENERAL NOTES

MOCK UP PANEL TO BE CONSTRUCTED ON SITE AS EARLY IN THE CONSTRUCTION PROCESS AS POSSIBLE. PANEL SHALL INCLUDE ALL COMPONENTS OF THE EXTERIOR WALL SYSTEM TO MATCH THE BUILDING CONSTRUCTION INCLUDING BUT NOT LIMITED TO: FRAMING, SHEATHING, AIRWEATHER BARRIERS, WATERPROOFING, ANCHORS, FLASHING, JOINT SEALANTS, ACCESSORIES, ETC. PANEL WILL BE REVIEWED BY THE OWNER AND ARCHITECT TO PROVIDE FINAL APPROVAL OF ALL MATERIALS AND COLORS, AS WELL AS SETTING THE STANDARD FOR THE WORKMANSHIP AND EXECUTION TO BE EXPECTED THROUGHOUT THE COURSE OF THE PROJECT. G.C. SHALL NOTIFY ARCHITECT AND OWNER WITHIN A MINIMUM OF SEVEN DAYS NOTICE WHEN THE PANEL HAS BEEN COMPLETED AND IS READY FOR REVIEW. ALL MATERIALS SHOWN ON THE PANEL MUST BE COMPLETELY INSTALLED BEFORE ANY APPROVALS OR RELEASES ON MATERIALS ARE PROVIDED. ANY MATERIALS ORDERED FOR THE PROJECT PRIOR TO THE APPROVAL OF THE PANEL BY BOTH THE OWNER AND THE ARCHITECT ARE AT THE SOLE RISK OF THE G.C. THE G.C. IS TO COORDINATE WITH CIVIL ENGINEER, ARCHITECT, AND OWNER FOR BEST LOCATION OF THE MOCK PANEL SO THAT IT CAN REMAIN IN PLACE AND PROTECTED WITHOUT INTERFERING WITH THE REQUIRED SITEWORK OF THE PROJECT. TO THE EXTENT POSSIBLE, PANEL SHALL BE ORIENTED FACING SOUTH. PANEL SHALL REMAIN ONSITE AND PROTECTED THROUGHOUT THE ENTIRE DURATION OF CONSTRUCTION AND SHALL NOT BE REMOVED UNTIL THE PUNCHLIST HAS BEEN COMPLETED. AT THAT TIME G.C. SHALL DEMOLISH AND REMOVE ALL ELEMENTS OF THE MOCK UP PANEL AND THE PATCH THE SITEWORK AS REQUIRED.



1 **MOCK UP PANEL ELEVATION**
A-4.2 Scale: 1-1/2"=1'-0"

Order Plans @ www.LDILine.com