



**ROBERT JOHNSON**  
architects  
1808 West Morehead St.  
Charlotte, NC 28208  
704 / 342.1058

STAMPS



CONSULTANT

**ALBEMARLE**  
**SHOPS**

CHARLOTTE, NC

PROJECT NUMBER 1943  
ISSUE DATE  
FOR CONSTRUCTION ONLY 07.01.20

**DRAWING DATA**  
DRAWN BY: EH/BM  
CHECKED BY: TH

**SHEET TITLE**

**EXTERIOR ELEVATIONS**

This drawing is the property of ROBERT JOHNSON ARCHITECTS, INC. and is not to be reproduced or copied in whole or in part. It is only to be used for the project and site specifically mentioned herein and is not to be used on any other project. It is to be returned upon request.

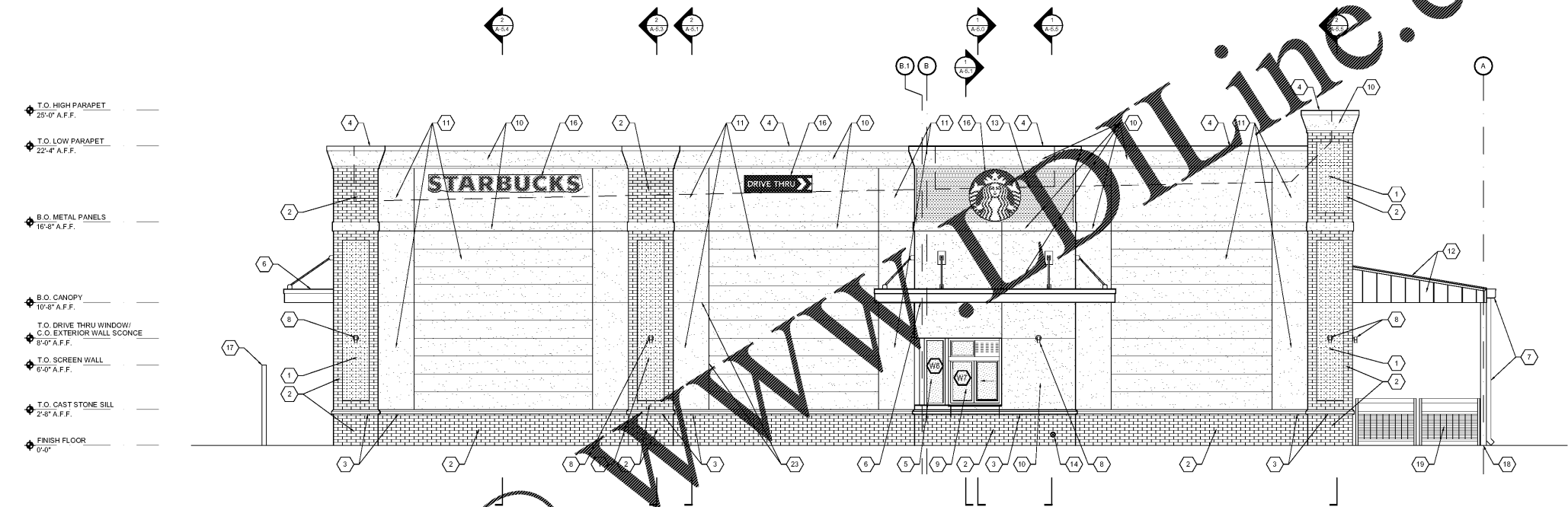
**SHEET NUMBER**

**A-4.1**

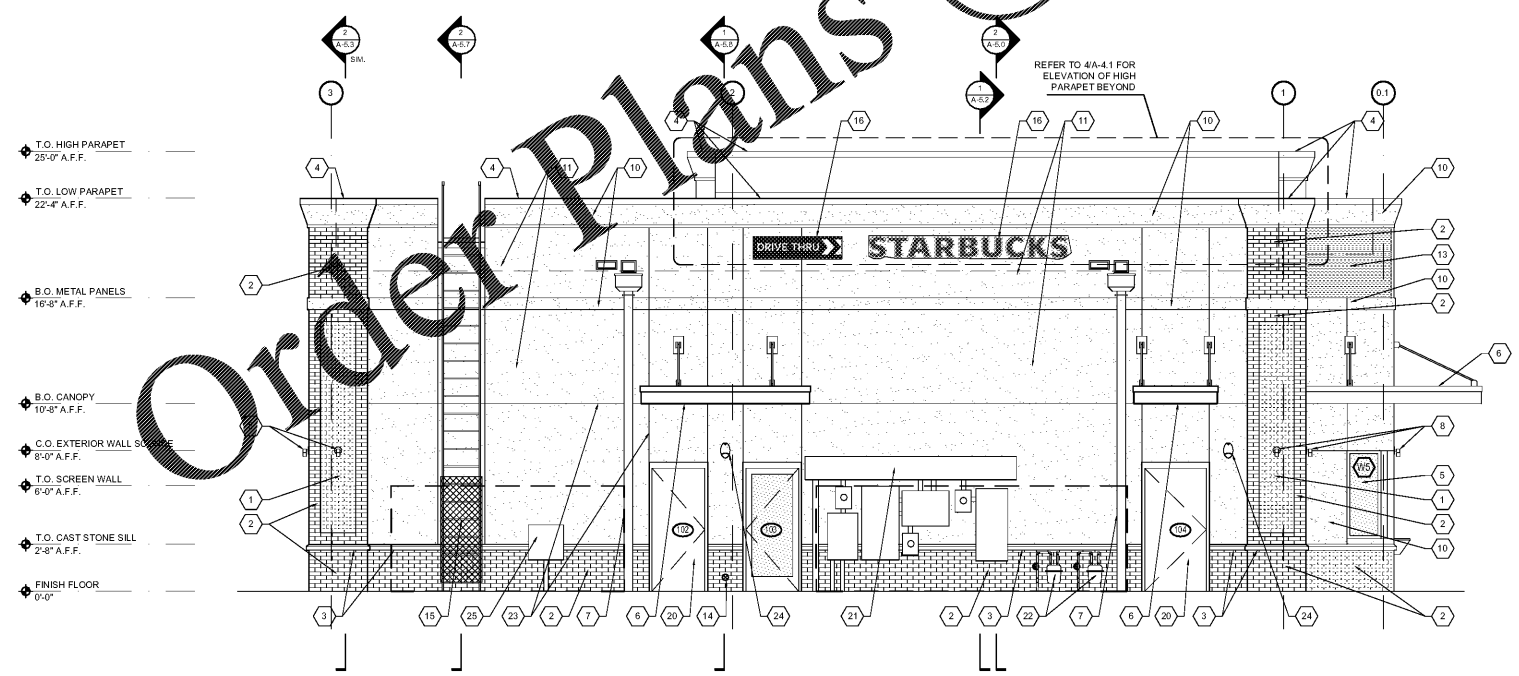
**NOTE:**  
ARCHITECT TO PROVIDE DIGITAL MATERIAL BOARD FOR COLOR ELEVATIONS. THESE WILL DEPICT COLORS AND MATERIALS FOR THE EXTERIOR ELEVATIONS.

**NOTE:**  
ALL BRICK CONTROL JOINTS TO BE PLACED ON INSIDE CORNER OF PIERS AS REQUIRED.

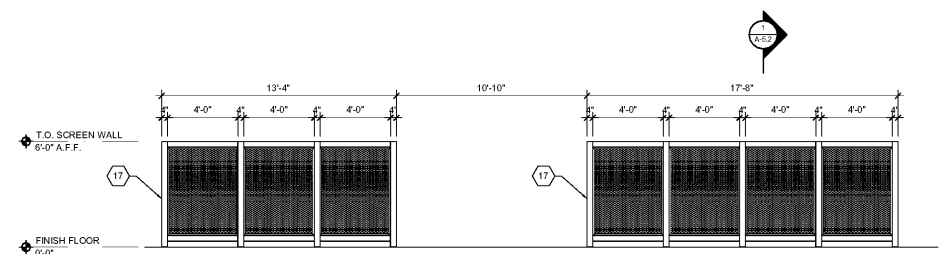
- KEYED NOTES**
- 1 BRICK VENEER - GENERAL SHALE, MODULAR BRICK, "GRAYSTONE VELOUR"
  - 2 BRICK VENEER - GENERAL SHALE, MODULAR BRICK, "CHESTNUT VELOUR"
  - 3 CAST STONE SILL - READING ROCK, "CRYSTAL WHITE"
  - 4 PREFINISHED ALUMINUM METAL COPING - FIRESTONE, COLOR: DARK BRONZE
  - 5 ALUMINUM STOREFRONT SYSTEM - KAWNEER OR APPROVED EQUAL - COLOR/FINISH TO BE DARK BRONZE
  - 6 PREFABRICATED ALUMINUM CANOPY - MAPES OR APPROVED EQUAL - COLOR/FINISH TO BE DARK BRONZE
  - 7 PREFINISHED METAL SCUPPER/GUTTER & DOWNSPOUT - FIRESTONE, COLOR: DARK BRONZE
  - 8 DECORATIVE LIGHT FIXTURE - COLOR TO MATCH STOREFRONT - SEE ELECTRICAL
  - 9 READY ACCESS - JTS SERIES WINDOW W/ SPLIT TRANSOM, 47-1/2" X 43-1/2" H - W/ MANUAL OPEN/ ELECTRONIC RELEASE
  - 10 EIFS - DRYVIT OR APPROVED EQUAL, COLOR: SHERWIN WILLIAMS SW 7019 "GAUNTLET GRAY"
  - 11 EIFS - DRYVIT OR APPROVED EQUAL, COLOR: SHERWIN WILLIAMS SW 7570 "EGRET WHITE"
  - 12 TEE PANEL STANDING SEAM METAL ROOF - BERRIDGE OR APPROVED EQUAL - COLOR: DARK BRONZE
  - 13 HR-16 METAL PANEL - BERRIDGE OR APPROVED EQUAL - COLOR: DARK BRONZE
  - 14 HOSE BIB - SEE PLUMBING
  - 15 ROOF ACCESS LADDER WITH SECURITY LADDER GUARD DOOR AND WALK-THRU - COLOR TO MATCH DARK BRONZE
  - 16 SIGNAGE SHOWN FOR REFERENCE ONLY - ALL SIGNAGE TO BE PERMITTED UNDER SEPARATE COVER BY TENANT - GC TO PROVIDE BLOCKING AND POWER FOR ALL FUTURE SIGNAGE LOCATIONS - TYPICAL STARBUCKS SIGNAGE
  - 17 PERFORATED POWDER COATED METAL UTILITY SCREEN - COLOR TO MATCH DARK BRONZE
  - 18 6X6 STAINED WOOD POST - STAM TO MATCH STANDING SEAM METAL ROOFING
  - 19 AWNEX "EVENING FENCE" FINISH: POWDER COATED STARBUCKS BLACK, #RAL 7021 W/ NO FINISH ON THE WOOD; 42" HIGH
  - 20 HOLLOW METAL DOOR AND FRAME - PAINTED SHERWIN WILLIAMS "URBANE BRONZE" SW 7048
  - 21 ELECTRICAL PANELS AND TROUGH - GC TO PROVIDE UNISTRUT AS REQUIRED - SEE ELECTRICAL
  - 22 GAS METERS - SEE PLUMBING
  - 23 E.I.F.S. CONTROL JOINT / SCORE LINE
  - 24 EMERGENCY LIGHT FIXTURE - SEE ELECTRICAL
  - 25 TELEPHONE SERVICE CABINET - SEE ELECTRICAL



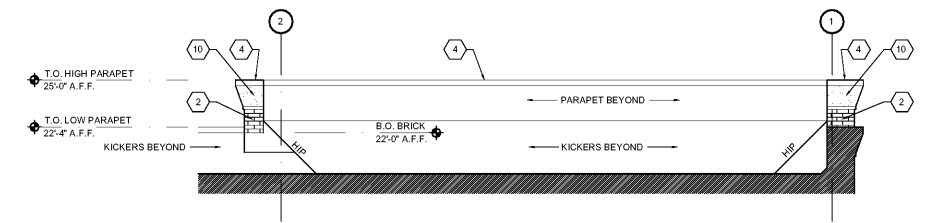
**1 WEST ELEVATION**  
A-4.1 Scale: 1/4"=1'-0"



**2 NORTH ELEVATION**  
A-4.1 Scale: 1/4"=1'-0"



**3 UTILITY SCREEN WALL ELEVATION**  
A-4.1 Scale: 1/4"=1'-0"



**4 HIGH PARAPET ELEVATION**  
A-4.1 Scale: 1/4"=1'-0"

- T.O. HIGH PARAPET 25'-0" A.F.F.
- T.O. LOW PARAPET 22'-4" A.F.F.
- B.O. METAL PANELS 16'-8" A.F.F.
- B.O. CANOPY 10'-8" A.F.F.
- T.O. DRIVE THRU WINDOW/ C.O. EXTERIOR WALL SCONCE 8'-0" A.F.F.
- T.O. SCREEN WALL 6'-0" A.F.F.
- T.O. CAST STONE SILL 2'-8" A.F.F.
- FINISH FLOOR 0'-0"

- T.O. HIGH PARAPET 25'-0" A.F.F.
- T.O. LOW PARAPET 22'-4" A.F.F.
- B.O. METAL PANELS 16'-8" A.F.F.
- B.O. CANOPY 10'-8" A.F.F.
- C.O. EXTERIOR WALL SCONCE 8'-0" A.F.F.
- T.O. SCREEN WALL 6'-0" A.F.F.
- T.O. CAST STONE SILL 2'-8" A.F.F.
- FINISH FLOOR 0'-0"