



JULY 7, 2020
 DATE

ALBEMARLE ROAD PARTNERS, LLC

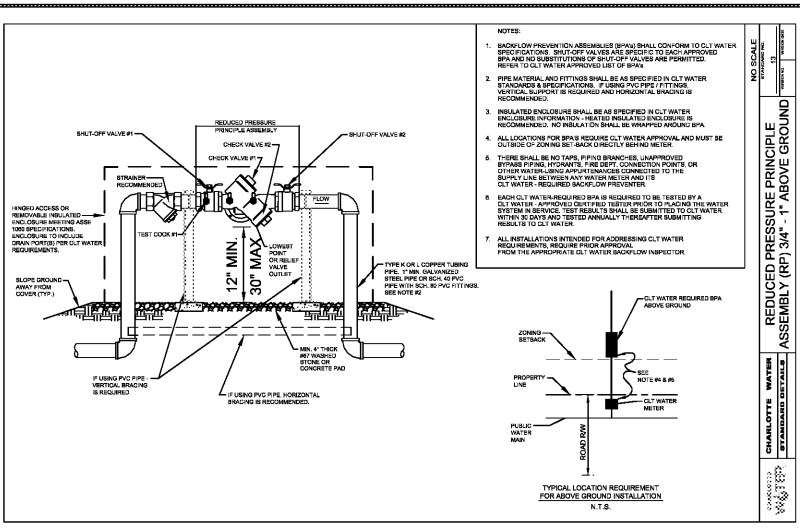
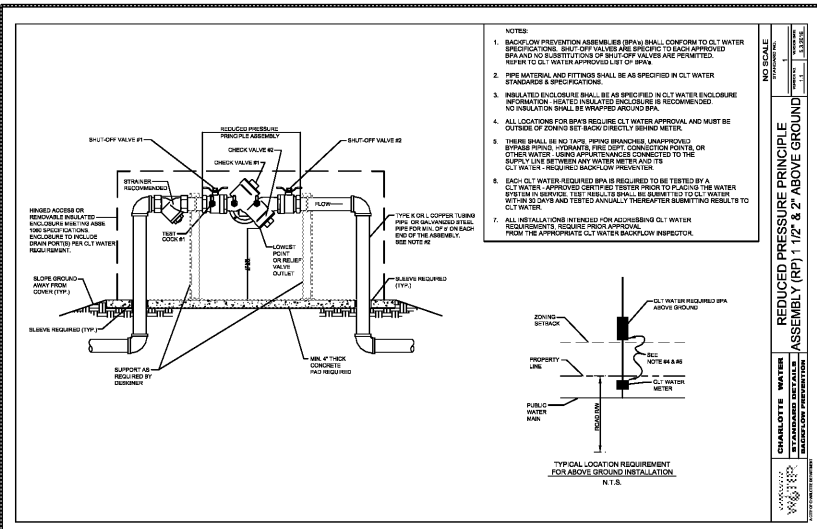
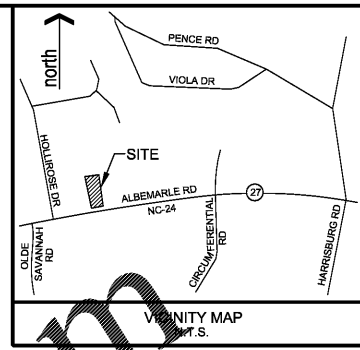
568 JETTON STREET
 SUITE 200
 DAVIDSON, NC 28036
 PH: 704-895-2084
 watson@peimontlanddevelopment.com

ALBEMARLE ROAD SHOPS
 8837 ALBEMARLE ROAD CHARLOTTE, NC 28227
UTILITY PLAN (BACKFLOW)

REVISIONS

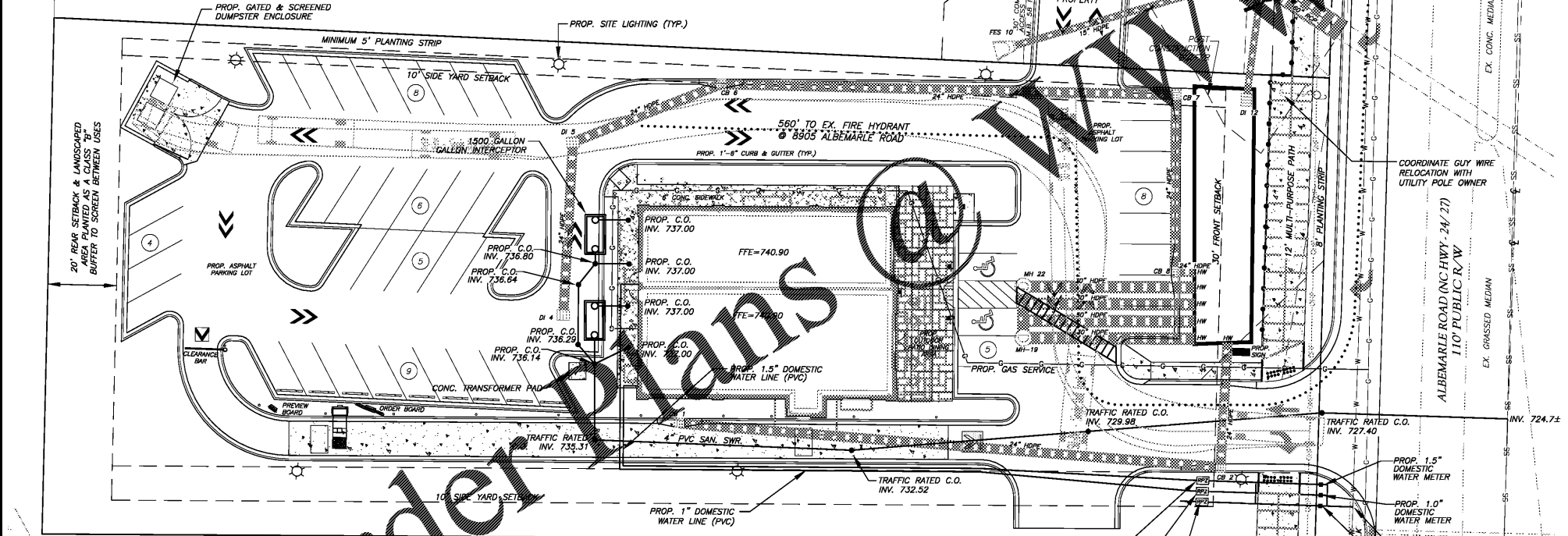
PROJECT NO.: 2019.13
 SCALE: 1" = 20'
 DRAWN BY: PAB
 CHECKED BY: MSL

SHEET NO:
C7.0



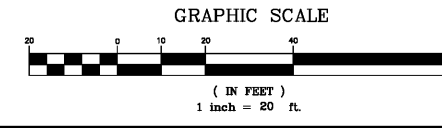
- UTILITY NOTES:**
1. ALL LATERALS SHALL HAVE NO LESS THAN 1.04% SLOPE.
 2. ALL WATER & SEWER INSTALLATION SHALL BE IN CONFORMANCE WITH THE CLWATER STANDARD DETAILS & SPECIFICATIONS AND THE NORTH CAROLINA BUILDING CODES.
 3. CONTRACTOR SHALL FIELD-VERIFY ALL EXISTING UTILITIES AND NOTIFY ENGINEER OF ANY DISCREPANCIES OR CONFLICTS.
 4. ALL CLEANOUTS IN PAVEMENT SHALL BE TRAFFIC RATED.
 5. NO PERMANENT INSULATION SHALL BE INSTALLED ON THE BACKFLOW PREVENTER ASSEMBLY. CLWATER RECOMMENDS THAT HEAT BE PROVIDED FOR ALL ABOVE-GROUND DOMESTIC AND COMBINATION SERVICE BP ENCLOSURES TO PREVENT FREEZE DAMAGE.

NOTE: ALL UTILITIES SHALL BE UNDERGROUND



PARCEL ID: 109-102-03
 BENNY F. & CAROL S. NORWOOD
 EX. LAND USE: SINGLE FAMILY RESIDENTIAL
 EX. ZONING: R-3

- NOTES:**
1. CONTACT THE UTILITY COMPANY TO RELOCATE ANY EXISTING UTILITY POLES. ALL EXISTING FACILITIES WHICH CONFLICT WITH THE IMPROVEMENTS UNDER THE SCOPE OF THIS PROJECT MUST BE RELOCATED AT THE EXPENSE OF THE APPLICANT.
 2. TREES WITHIN THE STREET RIGHT OF WAY ARE PROTECTED BY LAW. A PERMIT IS REQUIRED FROM THE CITY ARBORIST AT (704) 336-5753 PRIOR TO THE REMOVAL OF ANY RIGHT OF WAY TREES. ALL TREES OVER 8" IN DIAMETER AS MEASURED 4.5' ABOVE GROUND AND LOCATED WITHIN THE SETBACK ARE PROTECTED BY LAW. CONTACT LAND DEVELOPMENT AT (704) 336-6692 FOR REQUIRED PERMITS.
 3. BEFORE YOU DIG STOP... CALL THE NC ONE-CALL CENTER AT 1-800-632-4349. IT'S THE LAW.



PROP. 1.5" REDUCED PRESSURE PRINCIPLE BACKFLOW PREVENTION ASSEMBLY (FOR DOMESTIC) INSTALLED ABOVE-GROUND WITHIN INSULATED ENCLOSURE PER CLWATER REQUIREMENTS. ENCLOSURE TO INCLUDE DRAIN PORT(S) FOR DISCHARGE WATER PER CLWATER REQUIREMENTS. SEE DETAIL STD.#1 ON C7.0 (THIS SHEET)

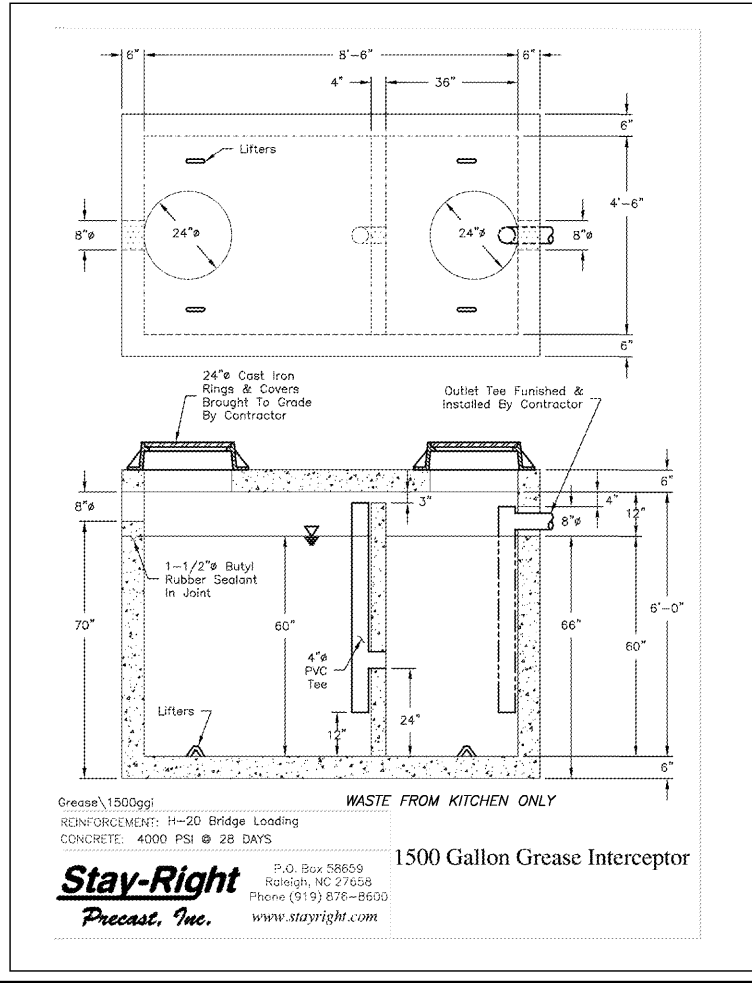
EACH CLWATER-REQUIRED BPA IS REQUIRED TO BE TESTED BY A CLWATER-APPROVED CERTIFIED TESTER PRIOR TO PLACING THE WATER SYSTEM IN SERVICE.

PROP. 1" REDUCED PRESSURE PRINCIPLE BACKFLOW PREVENTION ASSEMBLY (FOR DOMESTIC) INSTALLED ABOVE-GROUND WITHIN INSULATED ENCLOSURE PER CLWATER REQUIREMENTS. ENCLOSURE TO INCLUDE DRAIN PORT(S) FOR DISCHARGE WATER PER CLWATER REQUIREMENTS. SEE DETAIL STD.#13 ON C7.0 (THIS SHEET)

EACH CLWATER-REQUIRED BPA IS REQUIRED TO BE TESTED BY A CLWATER-APPROVED CERTIFIED TESTER PRIOR TO PLACING THE WATER SYSTEM IN SERVICE.

PROP. 3/4" REDUCED PRESSURE PRINCIPLE BACKFLOW PREVENTION ASSEMBLY (FOR IRRIGATION) INSTALLED ABOVE-GROUND WITHIN INSULATED ENCLOSURE PER CLWATER REQUIREMENTS. ENCLOSURE TO INCLUDE DRAIN PORT(S) FOR DISCHARGE WATER PER CLWATER REQUIREMENTS. SEE DETAIL STD.#13 ON C7.0 (THIS SHEET)

EACH CLWATER-REQUIRED BPA IS REQUIRED TO BE TESTED BY A CLWATER-APPROVED CERTIFIED TESTER PRIOR TO PLACING THE WATER SYSTEM IN SERVICE.



Grease 1500ggl
 REINFORCEMENT: H-20 Bridge Loading
 CONCRETE: 4000 PSI @ 28 DAYS
Stay-Right
 Precast, Inc.
 P.O. Box 58669
 Raleigh, NC 27658
 Phone (919) 878-8605
 www.stayright.com

1500 Gallon Grease Interceptor

