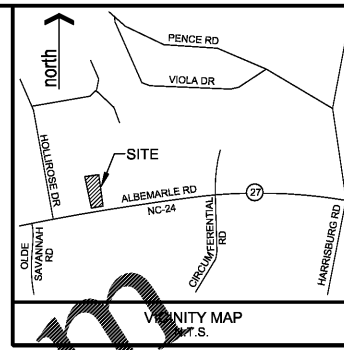


NOTES (AS APPLICABLE):

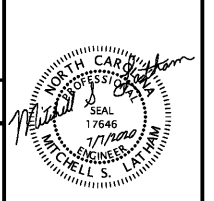
- COORDINATE ALL CURB AND STREET GRADES IN INTERSECTION WITH INSPECTOR.
- ALL ROAD IMPROVEMENTS ALONG ALBEMARLE ROAD (NC HWY 27) ARE TO BE COORDINATED WITH THE CITY OF CHARLOTTE ENGINEERING DEPARTMENT PRIOR TO CONSTRUCTION.
- DEVELOPER WILL PROVIDE STREET SIGNS PER CLDSM# 50.05 (9" SIGNS ONLY).
- SIGHT TRIANGLES SHOWN ARE THE MINIMUM REQUIRED.
- IN ROLLING AND HILLY TERRAINS, SWEEPING OF THE STONE BASE AND/OR APPLICATION OF A TACK COAT MAY BE REQUIRED NEAR INTERSECTIONS. THESE REQUIREMENTS WILL BE ESTABLISHED BY THE INSPECTOR AND BASED ON FIELD CONDITIONS.
- APPROVAL OF THIS PLAN IS NOT AN AUTHORIZATION TO GRADE ADJACENT PROPERTIES. WHEN FIELD CONDITIONS WARRANT OFF-SITE GRADING, PERMISSION MUST BE OBTAINED FROM THE AFFECTED PROPERTY OWNERS.
- IN ORDER TO ENSURE PROPER DRAINAGE, KEEP A MINIMUM OF 0.5% SLOPE ON THE CURB.
- SUBSURFACE DRAINAGE FACILITIES MAY BE REQUIRED IN THE STREET RIGHT-OF-WAY IF DEEMED NECESSARY BY THE INSPECTOR.
- CURB AND GUTTER SHOWN ON PLANS ALONG ALBEMARLE ROAD MAY BE ADJUSTED BASED UPON FIELD STAKING BY CITY ENGINEERING. ASSOCIATED STORM DRAINAGE MAY ALSO REQUIRE MODIFICATION BASED UPON FIELD CONDITIONS.
- THE PURPOSE OF THE STORM DRAINAGE EASEMENT (SDE) IS TO PROVIDE STORM WATER CONVEYANCE. BUILDINGS ARE NOT PERMITTED IN THE EASEMENT AREA. ANY OTHER OBJECTS WHICH IMPEDE STORM WATER FLOW OR SYSTEM MAINTENANCE ARE ALSO PROHIBITED.
- HIGH-DENSITY POLYETHYLENE (HDPE) STORM DRAINAGE PIPE INSTALLED WITHIN EXISTING OR PROPOSED PUBLIC STREET RIGHT-OF-WAY MUST BE APPROVED BY THE CITY'S INSPECTOR PRIOR TO ANY BACKFILL BEING PLACED. BACKFILL MATERIAL MUST BE APPROVED BY THE CITY INSPECTOR PRIOR TO PLACEMENT OF THE MATERIAL WITHIN THE PUBLIC STREET RIGHT-OF-WAY.
- THE DEVELOPER SHALL MAINTAIN EACH STREAM, CREEK, OR BACKWASH CHANNEL IN AN UNOBTURATED STATE AND SHALL REMOVE FROM THE CHANNEL AND BANKS OF THE STREAM ALL DEBRIS, LOGS, TIMBER, JUNK AND OTHER ACCUMULATIONS.
- ANY BUILDING WITHIN THE 100+1 STORMWATER ELEVATION LINE IS SUBJECT TO THE RESTRICTIONS OF THE (CITY OF CHARLOTTE/MECKLENBURG COUNTY) SUBDIVISION ORDINANCE, SECTION 7.200.8.
- ANY CONSTRUCTION OR USE WITHIN THE FUTURE CONDITIONS FLOOD FRINGE LINE IS SUBJECT TO THE RESTRICTIONS IMPOSED BY THE FLOODWAY REGULATIONS OF THE CITY OF CHARLOTTE AND MECKLENBURG COUNTY.

- ALL OPENINGS (E.G., DOORS, WINDOWS, VENTS) LOCATED IN STRUCTURE SHOULD BE LOCATED A MINIMUM OF ONE FOOT ABOVE THE ADJACENT FINISHED GROUND SURFACE (APPLIES TO SITES WHICH MAY EXPERIENCE SIGNIFICANT OVERLAND FLOW NOT CONSIDERED IN THE 100+1 FLOOD ANALYSIS).
- PE SEALED SHOP DRAWINGS FOR RETAINING WALL MUST BE SUBMITTED TO CITY ENGINEER PRIOR TO CONSTRUCTION.
- "AS-BUILT" DRAWINGS AND PLANS OF THE STORM DRAINAGE SYSTEM, INCLUDING DESIGNED DITCHES, MUST BE SUBMITTED PRIOR TO SUBDIVISION FINAL INSPECTION TO THE CITY/COUNTY ENGINEERING DEPARTMENT IN ACCORDANCE WITH THE CITY/COUNTY SUBDIVISION ORDINANCE.
- PRIOR TO INSTALLATION, PE SEALED SHOP DRAWINGS FOR UNDERGROUND DETENTION SYSTEMS MUST BE FURNISHED TO CITY OF CHARLOTTE ENGINEERING FOR APPROVAL.
- PRIOR TO CO. SURVEYOR SEALED AS-BUILT DRAWINGS OF ALL WATER QUALITY BMP'S AND DETENTION SYSTEMS MUST BE PROVIDED.
- PRIOR TO PLAT RECORDATION, OFFSITE R/W AND/OR CONSTRUCTION EASEMENTS ARE REQUIRED TO BE OBTAINED ACCORDING TO THE GUIDELINES OF THE "OFFSITE R/W ACQUISITION PROCESS". THESE NEEDED R/W AND CONSTRUCTION LIMITS ARE CLEARLY SHOWN ON THE ROADWAY IMPROVEMENT PLAN.
- PER SECTION 18-175(E) OF CITY CODE AND SECTION 10.0 OF THE CITY'S POST CONSTRUCTION CONTROLS ADMINISTRATIVE MANUAL, ALL REQUIRED NATURAL AREAS AND/OR POST CONSTRUCTION CONTROLS EASEMENTS (PCCES) MUST BE RECORDED PRIOR TO THE ISSUANCE OF THE CERTIFICATE OF OCCUPANCY.
- THE DEVELOPER SHALL CONTACT THE CHARLOTTE DEPARTMENT OF TRANSPORTATION (GUS JORDI, 704-336-7086) TO IDENTIFY ANY CONFLICTS WITH TRAFFIC SIGNALIZATION EQUIPMENT. 60- 90 DAYS WILL BE REQUIRED TO COORDINATE RELOCATION. DEVELOPER SHALL BE RESPONSIBLE FOR ALL RELATED RELOCATION COST AND/OR ANY REPAIR COST CAUSED BY THE CONTRACTOR/DEVELOPER.
- CERTIFICATION AND STREET CUT PERMITS ARE REQUIRED FOR UTILITY CUTS ON CITY STREETS. ALLOW 7 DAYS PROCESSING FOR PERMIT. FOR INFORMATION CONTACT CHARLOTTE DEPARTMENT OF TRANSPORTATION (704-336-4025) OR VISIT [HTTP://WWW.CHARMECK.ORG/DEPARTMENTS/TRANSPORTATION/STREET+MAINTENANCE/HOME.HTM](http://www.charmeck.org/departments/transportation/street+maintenance/home.htm)
- NON-STANDARD ITEMS (IE: PAVERS, IRRIGATION SYSTEMS, ETC.) IN THE RIGHT-OF-WAY REQUIRE A RIGHT-OF-WAY ENCROACHMENT AGREEMENT WITH THE CHARLOTTE DEPARTMENT OF TRANSPORTATION/NORTH CAROLINA DEPARTMENT OF TRANSPORTATION BEFORE INSTALLATION. FOR CITY OF CHARLOTTE MAINTAINED STREETS, CONTACT CDOT AT 704-336-3898.

- SIDEWALK WITHIN THE CITY'S R/W THAT REQUIRES REPLACEMENT AS PART OF THE DEVELOPMENT AND/OR STREET IMPROVEMENTS SHOULD BE PHASED IN SUCH A WAY AS TO MINIMIZE THE DURATION OF THE SIDEWALK CLOSURE TO THE EXTENT FEASIBLE. THE DEVELOPER SHOULD MAKE EVERY ATTEMPT TO HAVE SIDEWALK REPAIRED AND REOPENED FOR PUBLIC USE WITHIN 30 DAYS OF REMOVAL.
- ANY WORK WITHIN THE CITY'S R/W THAT REQUIRES CLOSURE OF A SIDEWALK OR TRAVEL LANE MUST BE APPROVED BY CDOT AND WILL REQUIRE A R/W USE PERMIT OR R/W LEASE DEPENDING UPON THE PROPOSED DURATION OF CLOSURE. THESE APPROVALS ARE IN ADDITION TO SITE APPROVALS AND SHOULD BE COORDINATED WITH CDOT PRIOR TO CONSTRUCTION. CONTRACTOR SHALL CONTACT CDOT AT (704) 432-1552 AT LEAST 5 BUSINESS DAYS PRIOR TO BEGINNING WORK FOR IMPACTS LESS THAN 30 DAYS. CONTRACTOR SHALL CONTACT CDOT AT (704) 336-8348 AS SOON AS POSSIBLE FOR IMPACTS GREATER THAN 30 DAYS. EVERY EFFORT SHALL BE MADE TO CONSTRUCT IMPROVEMENTS WITH MINIMAL IMPACT TO DRIVERS AND PEDESTRIANS.
- RIGHT-OF-WAY CLOSURES LONGER THAN 30 DAYS REQUIRE A R/W LEASE AGREEMENT WHICH WILL INCLUDE THE SUBMITTAL OF A TRAFFIC CONTROL PLAN. TRAFFIC CONTROL PLANS REQUIRED THROUGH A LEASE AGREEMENT MAY BE DIFFERENT FROM THE ONE REQUIRED DURING THE LAND DEVELOPMENT PLAN REVIEW AND ARE SUBJECT TO REVISIONS. THE REVISED TRAFFIC CONTROL PLANS MUST BE SUBMITTED AS PART OF THE LEASE AGREEMENT PROCESS FOR APPROVAL PRIOR TO START OF R/W CLOSURES. CONTRACTOR SHALL CONTACT CDOT AT (704) 336-8348.
- CONSTRUCTION STAGING WITHIN CITY R/W LASTING MORE THAN 30 DAYS REQUIRES A R/W LEASE AGREEMENT. CONTRACTOR SHALL CONTACT CDOT AT (704) 336-8348.
- THE DEVELOPER SHALL CONTACT THE CHARLOTTE DEPARTMENT OF TRANSPORTATION (GUS JORDI, 704-336-7086) TO IDENTIFY ANY CONFLICTS WITH TRAFFIC SIGNALIZATION EQUIPMENT. 60- 90 DAYS WILL BE REQUIRED TO COORDINATE RELOCATION. DEVELOPER SHALL BE RESPONSIBLE FOR ALL RELATED RELOCATION COST AND/OR ANY REPAIR COST CAUSED BY THE CONTRACTOR/DEVELOPER.
- DEVELOPER TO CONTACT CDOT (ALFRED OYOYO: 704-336-3939) DURING SITE PLAN PREPARATION TO DISCUSS STREET LIGHTING REQUIREMENTS, IF ANY, FOR THIS PROJECT. COORDINATE WITH DUKE ENERGY AND CDOT AS NECESSARY TO DETERMINE LIGHTING LEVELS, LIGHTING LAYOUT AND REQUIREMENTS FOR INSTALLATION.
- PRIVATE DEVELOPMENT UTILITY RELOCATION COORDINATION - FOR UTILITY COORDINATION RELATED TO BOTH EXISTING UTILITY RELOCATION NEEDS AND PROPOSED NEW UTILITY INSTALLATIONS, PLEASE CONTACT RALPH CDOT R/W UTILITY COORDINATOR AT 704-336-4248 OR RTRU@CHARLOTTE.ORG.
- A JOINT USE MANHOLE (MEET-ME MANHOLE) IS TO BE PROVIDED BY THE DEVELOPER TO ACCOMMODATE ALL UTILITY TELECOM SERVICE PROVIDERS. THE JOINT USE MANHOLE SHALL BE LOCATED ON PRIVATE PROPERTY OUTSIDE OF THE CITY RIGHT-OF-WAY.



LWE
LATHAM-WALTERS
ENGINEERING, INC.
N.C. CORP. LIC. C-1815
16507-A NORTH CROSS DRIVE
HUNTERVILLE, N.C. 28078
PHONE: (704) 895-8484
FAX: (704) 237-4362



JULY 7, 2020
DATE

ALBEMARLE ROAD SHOPS
PARTNERS, LLC

568 JETTON STREET
SUITE 200
DAVIDSON, NC 28036
PH: 704-895-2084
watson@edmondlanddevelopment.com

ALBEMARLE ROAD SHOPS
8837 ALBEMARLE ROAD CHARLOTTE, NC 28227

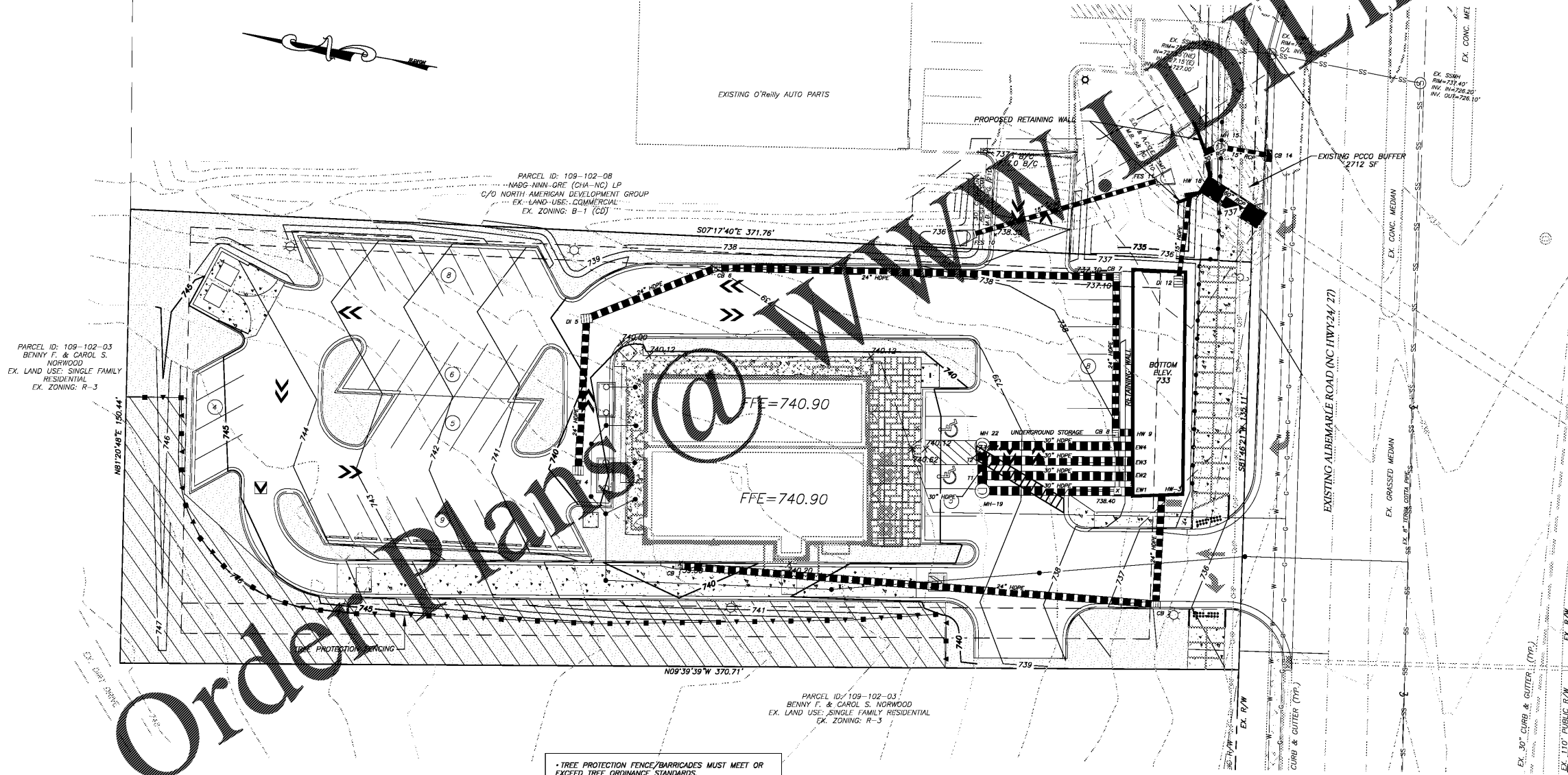
GRADING PLAN

REVISIONS

NO.	DESCRIPTION

PROJECT NO.: 2019.13
SCALE: 1" = 20'
DRAWN BY: PAB
CHECKED BY: MSL

SHEET NO:
C5.0



811
Know what's below.
Call before you dig.

- CONTRACTOR IS FULLY RESPONSIBLE FOR CONTACTING APPROPRIATE PARTIES AND ASSURING THAT EXISTING UTILITIES ARE LOCATED PRIOR TO BEGINNING CONSTRUCTION.
- CONTRACTOR IS RESPONSIBLE FOR PLACING BARRIAGES USING FLAGMEN, ETC., AS NECESSARY TO INSURE SAFETY TO THE PUBLIC.
- ALL PAVEMENT CUTS, CONCRETE OR ASPHALT, ARE TO BE REPLACED ACCORDING TO STANDARDS OF THE NORTH CAROLINA DEPARTMENT OF TRANSPORTATION.
- SKIRING WILL BE ACCORDING TO OSHA TRENCHING STANDARDS THAT 1926 SUBPART P, OR AS AMENDED.

- TREE PROTECTION FENCE/BARRICADES MUST MEET OR EXCEED TREE GRADUANCE STANDARDS.
- TREE PROTECTION FENCE/BARRICADES MUST BE INSTALLED BEFORE ANY DEMOLITION/CLEARING/GRADING/CONSTRUCTION, AND NOT REMOVED UNTIL AFTER AN INSPECTION BY URBAN FORESTRY STAFF.
- NO SOIL DISTURBANCE OR COMPACTION, CONSTRUCTION MATERIALS, TRAFFIC, BURIAL PITS, TRENCHING OR OTHER LAND DISTURBING ACTIVITY ALLOWED IN TREE SAVE AREAS.
- VIOLATIONS OF THE TREE PROTECTION REQUIREMENTS ARE SUBJECT TO FINES, AND/OR IMMEDIATE CORRECTIVE ACTION/MITIGATION.
- ALL TREES ON PUBLIC PROPERTY ARE PROTECTED BY ORDINANCE AND REMOVAL MUST BE APPROVED BY THE CITY ARBORIST (704) 336-4262.

- NOTES:**
- CONTACT THE UTILITY COMPANY TO RELOCATE ANY EXISTING UTILITY POLES. ALL EXISTING FACILITIES WHICH CONFLICT WITH THE IMPROVEMENTS UNDER THE SCOPE OF THIS PROJECT MUST BE RELOCATED AT THE EXPENSE OF THE APPLICANT.
 - TREES WITHIN THE STREET RIGHT OF WAY ARE PROTECTED BY LAW. A PERMIT IS REQUIRED FROM THE CITY ARBORIST AT (704) 336-4262 PRIOR TO THE REMOVAL OF ANY RIGHT OF WAY TREES. ALL TREES OVER 8" IN DIAMETER AS MEASURED 4.5' ABOVE GROUND AND LOCATED WITHIN THE SETBACK ARE PROTECTED BY LAW. CONTACT LAND DEVELOPMENT AT (704) 336-8692 FOR REQUIRED PERMITS.
 - BEFORE YOU DIG STOP. CALL THE NC ONE-CALL CENTER AT 1-800-632-4949. IT'S THE LAW.

