

CITY OF CHARLOTTE STANDARD NOTES:

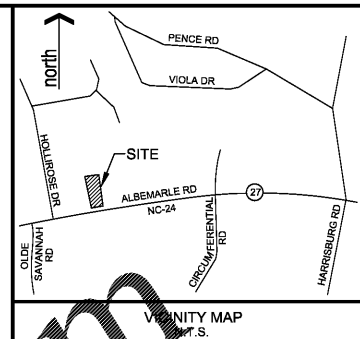
1. ALL "STD." NUMBERS REFER TO THE CHARLOTTE LAND DEVELOPMENT STANDARDS MANUAL.
2. ON-SITE BURIAL PITS REQUIRE AN ON-SITE DEMOLITION LANDFILL PERMIT FROM THE ZONING ADMINISTRATOR.
3. ANY GRADING BEYOND THE DENUDED LIMITS SHOWN ON THE PLAN IS A VIOLATION OF THE CITY/COUNTY EROSION CONTROL ORDINANCE AND IS SUBJECT TO A FINE.
4. GRADING MORE THAN ONE ACRE WITHOUT AN APPROVED EROSION CONTROL PLAN IS A VIOLATION OF THE CITY/COUNTY EROSION CONTROL ORDINANCE AND IS SUBJECT TO A FINE.
5. ALL PERIMETER DIKES, SWALES, DITCHES, PERIMETER SLOPES AND ALL SLOPES STEEPER THAN 3 HORIZONTAL TO 1 VERTICAL (3:1) SHALL BE PROVIDED TEMPORARY OR PERMANENT STABILIZATION WITH GROUND COVER AS SOON AS PRACTICABLE BUT IN ANY EVENT WITHIN 7 CALENDAR DAYS FROM THE LAST LAND-DISTURBING ACTIVITY.
6. ALL OTHER DISTURBED AREAS SHALL BE PROVIDED TEMPORARY OR PERMANENT STABILIZATION WITH GROUND COVER AS SOON AS PRACTICABLE BUT IN ANY EVENT WITHIN 14 CALENDAR DAYS FROM THE LAST LAND-DISTURBING ACTIVITY.
7. ADDITIONAL MEASURES TO CONTROL EROSION AND SEDIMENT MAY BE REQUIRED BY A REPRESENTATIVE OF THE CITY ENGINEERING DEPARTMENT.
8. SLOPES SHALL BE GRADED NO STEEPER THAN 2:1. FILL SLOPES GREATER THAN 10' REQUIRE ADEQUATE TERRACING [CLDSM #30.16]
9. A GRADING PLAN MUST BE SUBMITTED FOR ANY LOT GRADING EXCEEDING ONE ACRE THAT WAS NOT PREVIOUSLY APPROVED.

CITY OF CHARLOTTE CONSTRUCTION SEQUENCE NOTES:

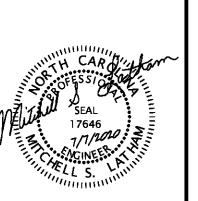
1. OBTAIN GRADING/EROSION CONTROL PLAN APPROVAL FROM THE CITY OF CHARLOTTE ENGINEERING DEPARTMENT.
2. SET UP A ON-SITE PRE-CONSTRUCTION CONFERENCE WITH EROSION CONTROL INSPECTOR OF THE CITY ENGINEERING DEPARTMENT TO DISCUSS EROSION CONTROL MEASURES. FAILURE TO SCHEDULE SUCH CONFERENCE 48 HOURS PRIOR TO ANY LAND DISTURBING ACTIVITY IS A VIOLATION OF CHAPTER 17 OF THE CITY CODE AND IS SUBJECT TO FINE.
3. INSTALL SILT FENCE, INLET PROTECTION, SEDIMENT TRAPS, DIVERSION DITCHES, TREE PROTECTION, AND OTHER MEASURES AS SHOWN ON PLANS. CLEARING ONLY AS NECESSARY TO INSTALL THESE DEVICES.
4. CALL FOR ON-SITE INSPECTION BY INSPECTOR. WHEN APPROVED, INSPECTOR ISSUES THE GRADING PERMIT AND CLEARING AND GRUBBING MAY BEGIN.
5. THE CONTRACTOR SHALL DILIGENTLY AND CONTINUOUSLY MAINTAIN ALL EROSION CONTROL DEVICES AND STRUCTURES.
6. FOR PHASED EROSION CONTROL PLANS, CONTRACTOR SHALL MEET WITH EROSION CONTROL INSPECTOR PRIOR TO COMMENCING WITH EACH PHASE OF EROSION CONTROL MEASURES.
7. STABILIZE SITE AS AREAS ARE BROUGHT TO FINISHED GRADE.
8. COORDINATE WITH EROSION CONTROL INSPECTOR PRIOR TO REMOVAL OF EROSION CONTROL MEASURE.
9. ALL EROSION CONTROL MEASURES SHALL BE CONSTRUCTED IN ACCORDANCE WITH THE N. C. EROSION AND SEDIMENT CONTROL PLANNING AND DESIGN MANUAL, U. S. DEPT. OF AGRICULTURE, CITY OF CHARLOTTE EROSION CONTROL ORDINANCE, AND THE CHARLOTTE LAND DEVELOPMENT STANDARDS MANUAL.

MAINTENANCE PLAN:

1. ALL EROSION AND SEDIMENT CONTROL MEASURES WILL BE CHECKED FOR STABILITY AND OPERATION EACH WEEK AND FOLLOWING EACH RAINFALL.
2. SEDIMENT IS TO BE REMOVED FROM THE ROCK DAMS AND BASINS WHEN STORAGE CAPACITY REACHES 50%. GRAVEL IS TO BE CLEANED AND/OR REPLACED WHEN THE SEDIMENT POOL NO LONGER DRAINS PROPERLY.
3. SEDIMENT IS TO BE REMOVED FROM SILT FENCE WHEN IT BECOMES APPROXIMATELY 0.5' DEEP AT THE FENCE. THE SILT FENCE WILL BE REPAIRED AS NECESSARY TO MAINTAIN A BARRIER.
4. ALL DISTURBED AREAS ARE TO BE FERTILIZED, SEEDED AND MULCHED AS NEEDED IN ACCORDANCE WITH THE SPECIFICATIONS.



LWE
LATHAM-WALTERS
ENGINEERING, INC.
N.C. CORP. LIC. C-1815
16507-A NORTH CROSS DRIVE
HUNTERSVILLE, N.C. 28078
PHONE: (704) 895-8484
FAX: (704) 237-4362



JULY 7, 2020
DATE

ALBEMARLE ROAD SHOPS
PARTNERS, LLC

568 JETTON STREET
SUITE 200
DAVIDSON, NC 28036
PH: 704-895-2084
watson@piedmontlanddevelopment.com

ALBEMARLE ROAD SHOPS
8837 ALBEMARLE ROAD CHARLOTTE, NC 28227
EROSION CONTROL PLAN
PHASE I

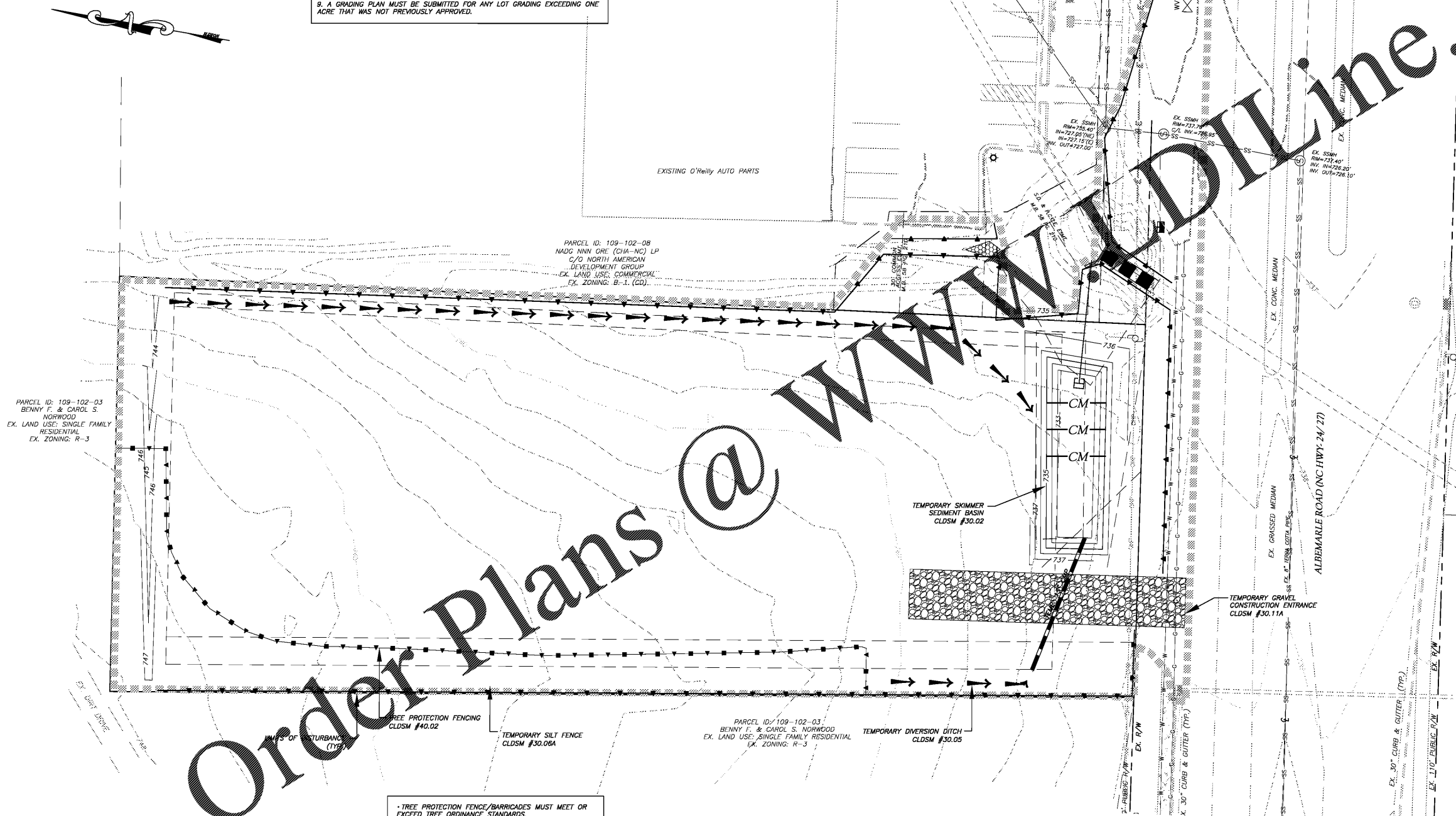
REVISIONS

PROJECT NO.: 2019.13
SCALE: 1" = 20'
DRAWN BY: PAB
CHECKED BY: MSL

SHEET NO:
C3.0

SITE DATA:

1. SITE ACREAGE = ±1.217 ACRES
2. DISTURBED AREA = ±1.40 ACRES
3. SURVEY & TOPO INFORMATION FROM:
JACK R. CHRISTIAN & ASSOCIATES
7811 OLD CONCORD ROAD
CHARLOTTE, NC 28213
704-596-2214
4. SEE SHEET C4.0-C4.2 FOR EROSION CONTROL DETAILS.
5. THE PLAN APPROVAL IS BASED UPON THE EXISTING SITE CONDITIONS. ADDITIONAL MEASURES MAY BE REQUIRED IF THE PROPOSED MEASURES CAN NOT FUNCTION AS INTENDED.



* TREE PROTECTION FENCE/BARRICADES MUST MEET OR EXCEED TREE ORDINANCE STANDARDS.

* TREE PROTECTION FENCE/BARRICADES MUST BE INSTALLED BEFORE ANY DEMOLITION/CLEARING/GRADING/CONSTRUCTION, AND NOT REMOVED UNTIL AFTER AN INSPECTION BY URBAN FORESTRY STAFF.

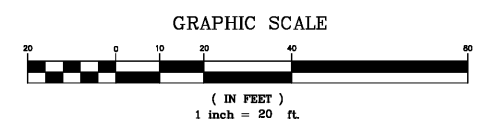
* NO SOIL DISTURBANCE OR COMPACTION, CONSTRUCTION MATERIALS, TRAFFIC, BURIAL PITS, TRENCHING OR OTHER LAND DISTURBING ACTIVITY ALLOWED IN TREE SAVE AREAS.

* VIOLATIONS OF THE TREE PROTECTION REQUIREMENTS ARE SUBJECT TO FINES, AND/OR IMMEDIATE CORRECTIVE ACTION/MITIGATION.

* ALL TREES ON PUBLIC PROPERTY ARE PROTECTED BY ORDINANCE AND REMOVAL MUST BE APPROVED BY THE CITY ARBORIST (704) 336-4262.

NOTES:

1. CONTACT THE UTILITY COMPANY TO RELOCATE ANY EXISTING UTILITY POLES. ALL EXISTING FACILITIES WHICH CONFLICT WITH THE IMPROVEMENTS UNDER THE SCOPE OF THIS PROJECT MUST BE RELOCATED AT THE EXPENSE OF THE APPLICANT.
2. TREES WITHIN THE STREET RIGHT OF WAY ARE PROTECTED BY LAW. A PERMIT IS REQUIRED FROM THE CITY ARBORIST AT (704) 336-5753 PRIOR TO THE REMOVAL OF ANY RIGHT OF WAY TREES. ALL TREES OVER 8" IN DIAMETER AS MEASURED 4.5' ABOVE GROUND AND LOCATED WITHIN THE SETBACK ARE PROTECTED BY LAW. CONTACT LAND DEVELOPMENT AT (704) 336-6892 FOR REQUIRED PERMITS.
3. BEFORE YOU DIG STOP... CALL THE NC ONE-CALL CENTER AT 1-800-632-4949. IT'S THE LAW.



Know what's Below.
Call before you dig.