



MAINTENANCE BUILDINGS

3700 GLENEAGLES RD.
CHARLOTTE, NC 28210

BW & A Barrett, Woodyard and Associates, Inc.
License # C-2226

420 Market LN
Charlotte, North Carolina 28217
(p) 704-357-8333 (f) 704-357-8385
This drawing is copyrighted. It may not be reproduced or used in any other form or on any other project.
3WA J03 # 2020-0497



227 WEST TRADE STREET SUITE 700
CHARLOTTE, NORTH CAROLINA 28202
TEL. 704.333.8686 FAX 704.333.2926
WWW.LS3P.COM



MEMBERS OF THE AMERICAN INSTITUTE OF ARCHITECTS

COPYRIGHT 2020 ALL RIGHTS RESERVED
PRINTED OR ELECTRONIC DRAWINGS AND DOCUMENTATION MAY NOT BE REPRODUCED IN ANY FORM WITHOUT WRITTEN PERMISSION FROM LS3P ASSOCIATES LTD.

REVISIONS:

No.	Description	Date
01	ISSUED FOR CONSTRUCTION	06/19/20

PROJECT: 9600-197950
DATE: 19 JUNE 2020
DRAWN BY: TT
CHECKED BY: JSL

**FLOOR PLAN
PHASE 2 -
MECHANICAL
CONNECTIONS**

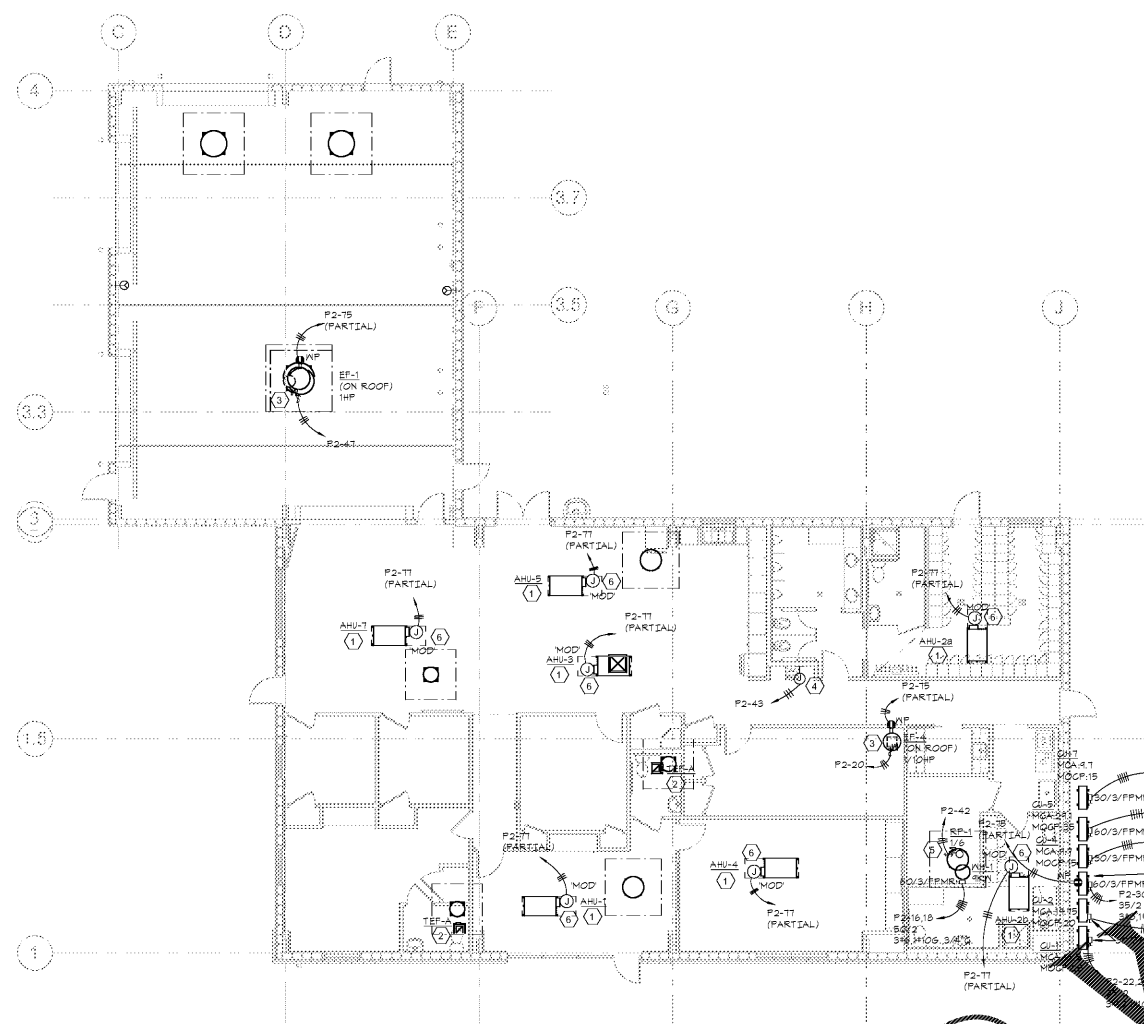
E-302

GENERAL NOTES:
(APPLY TO THIS SHEET ONLY)

- COORDINATE ALL EQUIPMENT LOCATIONS AND CONNECTION REQUIREMENTS WITH THE HVAC CONTRACTOR (DIV23) AND/OR PLUMBING CONTRACTOR (DIV22) PRIOR TO INSTALLATION.
- HATCHED AREA NOT IN THIS SCOPE OF WORK.
- 'E' DENOTES EXISTING DEVICE TO REMAIN. 'R' DENOTES EXISTING DEVICE TO BE RELOCATED.
- CIRCUIT HOMERUN DESIGNATIONS ARE NOTED FOR DESIGN INTENT ONLY BASED ON FIELD OBSERVATIONS OF EXISTING PANEL SCHEDULES. WHERE AVAILABLE CONTRACTOR TO CONFIRM ALL SPARE CIRCUIT BREAKERS AND THOSE MADE AVAILABLE DUE TO DEMOLITION.
- REFER TO SHEET E-103 FOR LOCATION OF ELECTRICAL DISTRIBUTION PANELS.

LEGEND NOTES:
(APPLY THIS SHEET ONLY)

- INDOOR AHUS POWERED BY OUTDOOR UNIT. COORDINATE WIRING AND LOCATIONS WITH MECHANICAL CONTRACTOR.
- INTERIOR EXHAUST FANS ARE TO BE TIED INTO RESTROOM LIGHTING CIRCUITS.
- PROVIDE MOTOR RATED SWITCH FOR EXHAUST FAN. COORDINATE EXACT LOCATION WITH MECHANICAL CONTRACTOR.
- CONNECT TO WATER FLOOR DRAIN/EMERGENCY SINK. COORDINATE LOCATION WITH MECHANICAL CONTRACTOR.
- PROVIDE MOTOR RATED SWITCH FOR FAN-1. COORDINATE LOCATION WITH PLUMBING CONTRACTOR.
- PROVIDE MOTOR RATED SWITCH AND DISCONNECTING MEANS FOR MOTOR OPERA DAMPER.



1 FLOOR PLAN PHASE 2 - MECHANICAL CONNECTIONS
E-302 1/8" = 1'-0"

Order Plans @

WWW.LDILINE.COM