



**MAINTENANCE BUILDINGS**

3700 GLENEAGLES RD.  
CHARLOTTE, NC 28210

**BW & A** Barrett, Woodyard and Associates, Inc.  
License # C-2226

420 Misset Ln.  
Charlotte, North Carolina 28217  
(p) 704-357-8333 (f) 704-357-8385  
This drawing is copyrighted. It may not be reproduced or used in any other form or on any other project.  
3WA J03 # 2020-0497



227 WEST TRADE STREET SUITE 700  
CHARLOTTE, NORTH CAROLINA 28202  
TEL. 704.333.8688 FAX 704.333.2926  
WWW.LS3P.COM



MEMBERS OF THE AMERICAN INSTITUTE OF ARCHITECTS

COPYRIGHT 2020 ALL RIGHTS RESERVED  
PRINTED OR ELECTRONIC DRAWINGS AND DOCUMENTATION MAY NOT BE REPRODUCED IN ANY FORM WITHOUT WRITTEN PERMISSION FROM LS3P ASSOCIATES LTD.

**REVISIONS:**

No.	Description	Date
01	ISSUED FOR CONSTRUCTION	06/19/20

PROJECT: 9600-197950  
DATE: 19 JUNE 2020  
DRAWN BY: TT  
CHECKED BY: JSL

**FLOOR PLAN  
PHASE 3 -  
MECHANICAL  
CONNECTIONS**

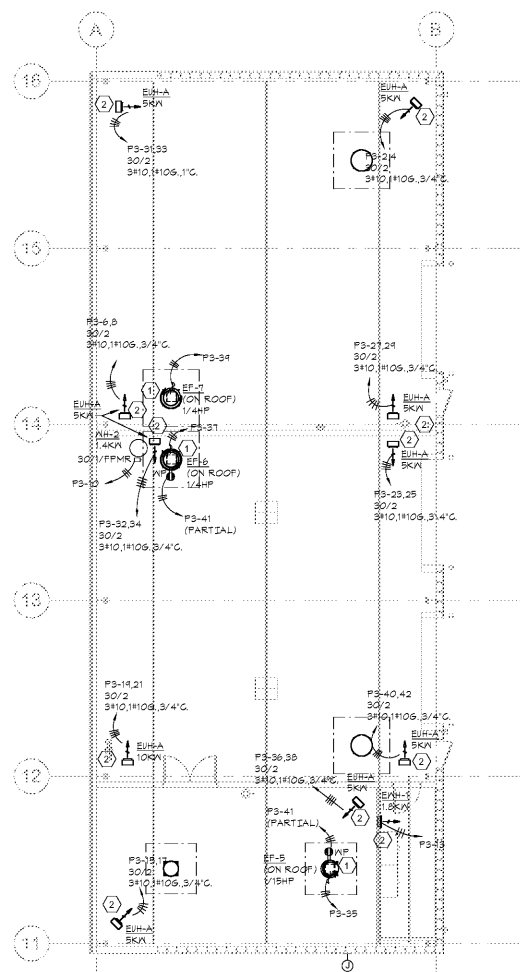
**E-301**

**GENERAL NOTES:**  
(APPLY TO THIS SHEET ONLY)

- COORDINATE ALL EQUIPMENT LOCATIONS AND CONNECTION REQUIREMENTS WITH THE HVAC CONTRACTOR (DIV 22) AND/OR PLUMBING CONTRACTOR (DIV 22) PRIOR TO INSTALLATION.
- HATCHED AREA NOT IN THIS SCOPE OF WORK.
- 'E' DENOTES EXISTING DEVICE TO REMAIN, 'R' DENOTES EXISTING DEVICE TO BE RELOCATED.
- CIRCUIT HOMERUN DESIGNATIONS ARE NOTED FOR DESIGN INTENT ONLY BASED ON FIELD OBSERVATIONS OF EXISTING PANEL SCHEDULES. WHERE AVAILABLE CONTRACTOR TO CONFIRM ALL SPARE CIRCUIT BREAKERS AND THOSE MADE AVAILABLE DUE TO DEMOLITION.
- REFER TO SHEET E-101 FOR LOCATION OF ELECTRICAL DISTRIBUTION PANELS.

**LEGEND NOTES:**  
(APPLY TO THIS SHEET ONLY)

- PROVIDE MOTOR RATED SWITCH IN WEATHER PROOF ENCLOSURE AS DISCONNECTING MEANS FOR EXHAUST FAN. COORDINATE LOCATION WITH MECHANICAL CONTRACTOR.
- DISCONNECT IS INTEGRAL TO UNIT.



**2 FLOOR PLAN PHASE 3 - MECHANICAL CONNECTIONS**  
E-301 1/8" = 1'-0"

Order Plans @ www.LDILine.com