



**MAINTENANCE BUILDINGS**

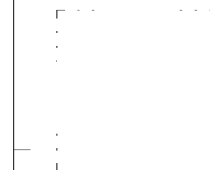
3700 GLENEAGLES RD.  
CHARLOTTE, NC 28210

**BW & A** Barrett, Woodyard and Associates, Inc.  
License # C-2226

420 MARKET LN.  
Charlotte, North Carolina 28217  
(p) 704-357-8333 (f) 704-357-8385  
This drawing is copyrighted. It may not be reproduced or used in any other form or on any other project.  
3WA J03 # 2020-0497



227 WEST TRADE STREET SUITE 700  
CHARLOTTE, NORTH CAROLINA 28202  
TEL. 704.333.8668 FAX 704.333.2926  
WWW.LS3P.COM



MEMBERS OF THE AMERICAN INSTITUTE OF ARCHITECTS

COPYRIGHT 2020 ALL RIGHTS RESERVED  
PRINTED OR ELECTRONIC DRAWINGS AND DOCUMENTATION MAY NOT BE REPRODUCED IN ANY FORM WITHOUT WRITTEN PERMISSION FROM LS3P ASSOCIATES LTD.

**REVISIONS:**

No.	Description	Date
01	ISSUED FOR CONSTRUCTION	06/19/20

PROJECT: 9600-197950  
DATE: 19 JUNE 2020  
DRAWN BY: TT  
CHECKED BY: JSL

**FLOOR PLAN  
PHASE 2 -  
LIGHTING**

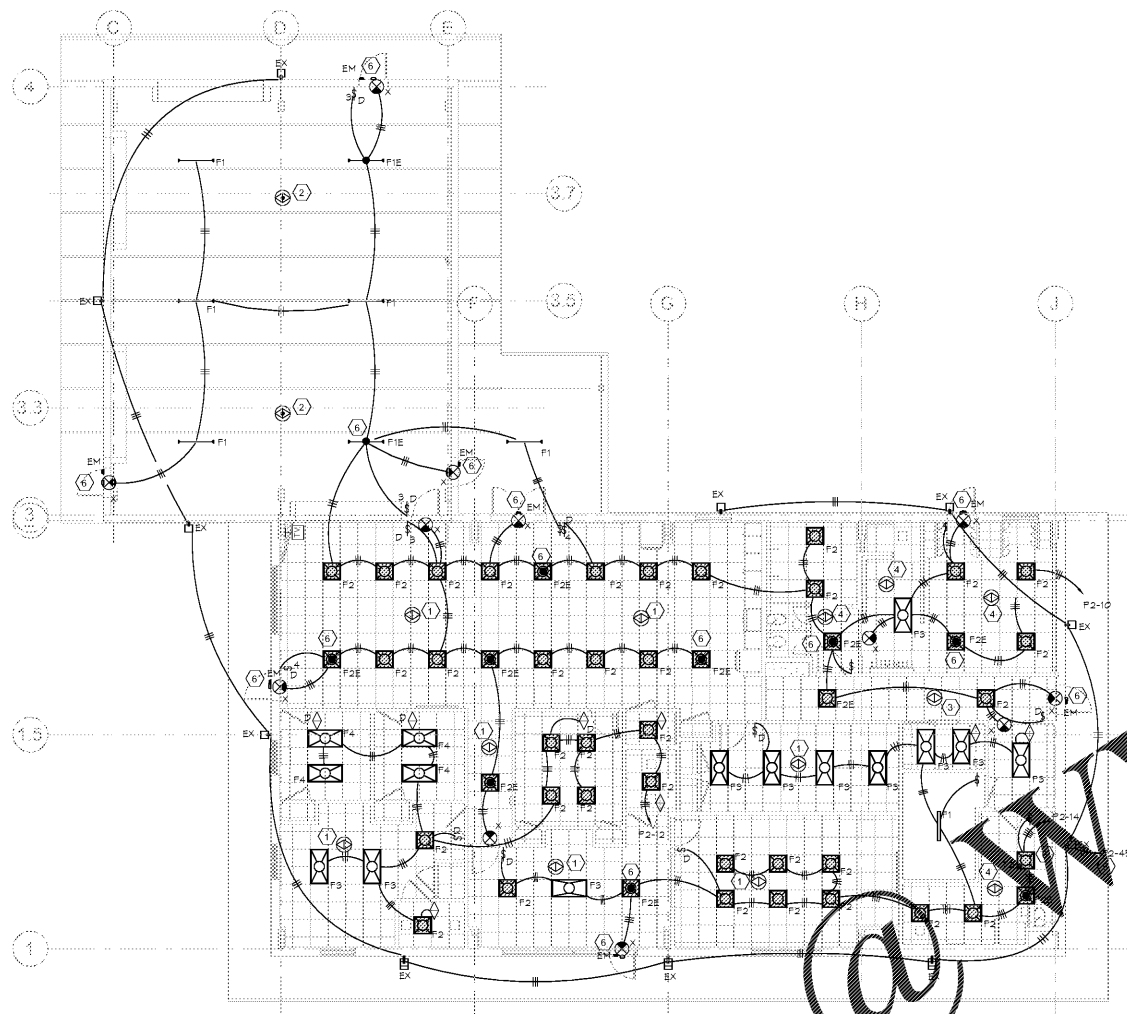
**E-202**

**GENERAL NOTES:**  
(APPLY THIS SHEET ONLY)

- COORDINATE EXACT ELEVATION, LOCATION AND MOUNTING HEIGHTS WITH ARCHITECTURAL PLANS. REFER TO ARCHITECTURAL REFLECTED CEILING PLANS, DETAILS, AND LIGHTING NOTES FOR FURTHER INFORMATION OF DEVICE PLACEMENT AND OTHER RELEVANT INFORMATION. CONTRACTOR SHALL NOTIFY ARCHITECT AND ELECTRICAL ENGINEER AT ONCE IF ANY DISCREPANCIES ARE DETECTED.
- HATCHED AREA IS NOT IN SCOPE OF WORK.
- SEE ELECTRICAL SYSTEM AND EQUIPMENT SCHEDULE FOR LIGHTING POWER DENSITY INFORMATION.
- ALL LIGHT FIXTURES CONTAINING BATTERY PACK FOR EMERGENCY LIGHTING SHALL BE CONTROLLED WITH THE GENERAL LIGHTING IN THE ROOM/AREA. PROVIDE AN ADDITIONAL UNSWITCHED "HOT" CONDUCTOR TO THESE LIGHTING FIXTURES.
- ALL SWITCHES FOR LIGHTS, SHADES, ETC. WHICH ARE SHOWN TO BE MOUNTED IN THE SAME GENERAL AREA SHALL BE GANGED TOGETHER AND SHARE A MULTI-GANG COVER PLATE WHERE POSSIBLE.
- REFER TO SHEET E-103 FOR LOCATION OF ELECTRICAL DISTRIBUTION PANELS.
- ALL EXIT SIGNS ARE TYPE 'X' UNLESS OTHERWISE NOTED.
- WALL MOUNTED OCCUPANCY SENSORS W/ SINGLE OVERRIDE SHALL BE STEINEL #DT WLS DIM.
- LOWER CASE LETTERS IN LIGHTING FIXTURES AND ADJACENT TO EACH INDIVIDUAL ROOM/AREA INDICATE WHICH LIGHT FIXTURE IS TO BE CONTROLLED FROM EACH CORRESPONDING SWITCH IN THAT ROOM/AREA.
- ALL CONTROL CABLING PROVIDED AS A PART OF THE LIGHTING CONTROL SYSTEM SHALL BE PLENUM RATED.

**LEGEND NOTES:**  
(APPLY THIS SHEET ONLY)

- OCCUPANCY SENSOR IS TO BE STEINEL #DT QUATTRO DIM-24. PROVIDE TR-100 POWER PACK AS NECESSARY.
- OCCUPANCY SENSOR IS TO BE STEINEL #IR QUATTRO HD COM1-24. PROVIDE TR-100 POWER PACK AS NECESSARY.
- OCCUPANCY SENSOR IS TO BE STEINEL #US HALLWAY DIM-24. PROVIDE TR-100 POWER PACK AS NECESSARY.
- OCCUPANCY SENSOR IS TO BE STEINEL #US QUATTRO COM1-24. PROVIDE TR-100 POWER PACK AS NECESSARY.
- FIXTURES ARE PROVIDED WITH PHOTOCELLS FOR DUSK TO DAWN CONTROL.
- EMERGENCY LIGHTING IS TO BE TIED INTO LOCAL LIGHTING CIRCUIT. PROVIDE UNSWITCHED "HOT" CONDUCTOR TO THESE LIGHTING FIXTURES.



**1 FLOOR PLAN PHASE 2 - LIGHTING**  
E-202 1/8" = 1'-0"

Order Plans @ [www.LDILine.com](http://www.LDILine.com)