

MAINTENANCE BUILDINGS



WGPM, Inc.
Pugh - Dixon - Hutton
STRUCTURAL ENGINEERING
11220 Elm Lane, Suite 201
Charlotte, North Carolina 28271
704.542.7100 Fax: 704.542.7195
www.wgpm.com
JOB NUMBER: 14-20
NC License No. C-4302

LS3P

227 WEST TRADE STREET SUITE 700
CHARLOTTE, NORTH CAROLINA 28202
TEL. 704.333.6686 FAX 704.333.2926
WWW.LS3P.COM

MEMBERS OF THE AMERICAN INSTITUTE OF ARCHITECTS

COPYRIGHT 2020 ALL RIGHTS RESERVED
PRINTED OR ELECTRONIC DRAWINGS AND
DOCUMENTATION MAY NOT BE REPRODUCED
IN ANY FORM WITHOUT WRITTEN PERMISSION
FROM LS3P ASSOCIATES LTD.

REVISIONS:

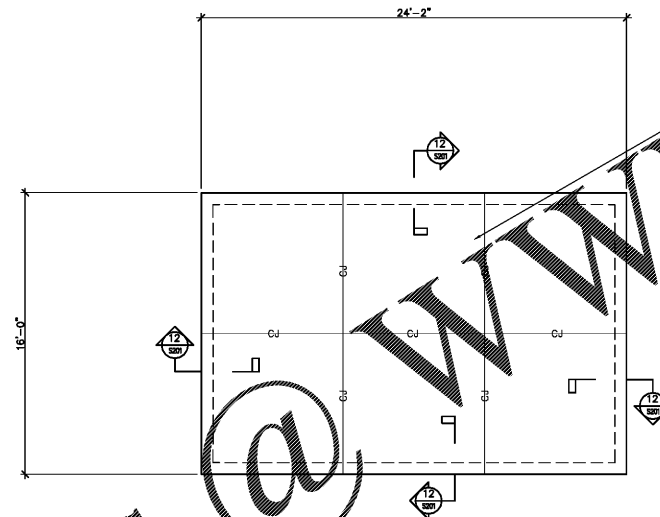
No.	Description	Date

PROJECT: 9600-197950
DATE: 19 JUNE 2020
DRAWN BY: HLW
CHECKED BY: HLW

PHASE 5 -
FOUNDATION
PLAN

S-105

Order Plans @ WWW.LSDIline.com



PROJECT: WINSTON-SALEM
NO. 21141
DATE: 19/06/20
1 FOUNDATION PLAN
1/8" = 1'-0"

NOTES:

1. ALL ELEVATIONS () REFERENCED FROM FINISH FLOOR ELEVATION 591.50' (0-0).
2. TOP OF EXTERIOR FOOTINGS - T.O.F. () UNLESS NOTED OTHERWISE.
3. TOP OF PIER - T.O.P. () - SEE S201 - TYPICAL UNLESS NOTED OTHERWISE.
4. SEE SHEET S001 FOR GENERAL NOTES.

NOTE!
PROVIDE SLAB CONSTRUCTION OR CONTROL JOINT - CJ - ● 10'-0"
MAXIMUM AT 4" SOG - SEE 1/S201 - TYPICAL.