

**NOTE!**  
GENERAL CONTRACTOR SHALL REVIEW AND COORDINATE ALL STEEL LINE COLUMN AND FRAME DIMENSIONS WITH PEMB SUPPLIER AND ARCHITECTURAL DRAWINGS - TYP.

**NOTE!**  
\*ALL HAIRPINS HP#1 - TYPICAL UNLESS NOTED OTHERWISE

**NOTE!**  
\*CENTER ALL HAIRPINS IN SLAB - TYPICAL UNLESS NOTED OTHERWISE

**NOTE!**  
CONTINUE ALL TURNED DOWN SLAB REINFORCING THRU PIERS AND FOOTINGS - TYP.

**NOTE!**  
TOP OF PIER SHALL MATCH FINISH FLOOR ELEVATION (0-0) - TYP. U.N.O.

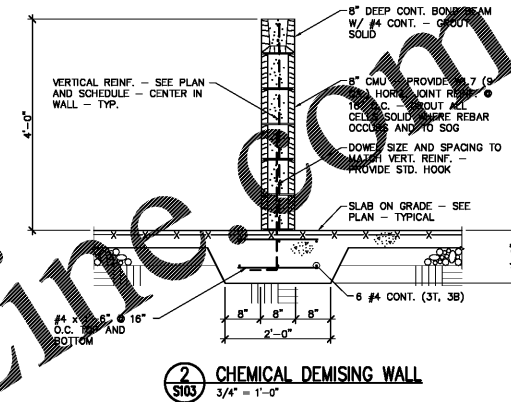
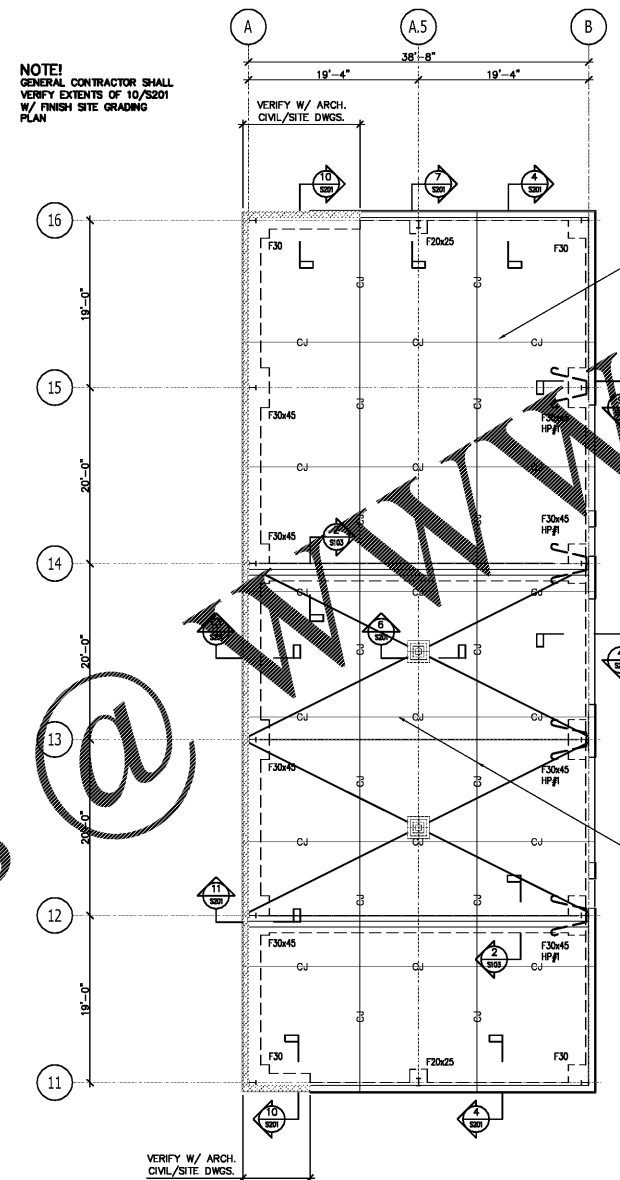
**FOOTING SCHEDULE (1,500 PSF)**

MARK	SIZE	THICK.	REINFORCING
F20x25	2'-0" x 2'-6"	1'-8" MIN.	4 #3 1'-8" S.D.T.&B. 3 #3 2'-0" L.D.T.&B.
F30	3'-0" x 3'-0"	1'-8" MIN.	4 #4 2'-6" E.W.T.&B. 5 #4 2'-6" S.D.T.&B.
F30x45	3'-0" x 4'-6"	1'-8" MIN.	5 #4 2'-6" S.D.T.&B. 3 #4 4'-0" L.D.T.&B.

SOILS LABORATORY SHALL VERIFY SOIL BEARING PRESSURE AT BOTTOM OF EACH FOOTING PRIOR TO PLACING CONCRETE. STRUCTURAL FILL SUPPORTING SLAB OR FOOTINGS SHALL BE PLACED IN MAXIMUM 8" LIFTS, WITH EACH 8" LIFT TESTED BY LABORATORY FOR COMPACTION LISTED IN GENERAL NOTES. EWIT&B INDICATES EACH WAY TOP AND BOTTOM. LDT&B INDICATES LONG DIRECTION TOP AND BOTTOM. SDT&B INDICATES SHORT DIRECTION TOP AND BOTTOM.

**HAIRPIN SCHEDULE**

TYPICAL COLUMN		CORNER COLUMN	
MARK	SIZE	A	B
HP#1	#4	1'-6"	1'-6"
			C
			4'-0"



Order Plans @

**1 FOUNDATION PLAN**  
1/8" = 1'-0"

- NOTES:
- ALL ELEVATIONS ( ) REFERENCED FROM FINISH FLOOR ELEVATION 595.00' (0-0).
  - TOP OF EXTERIOR FOOTINGS - T.O.F. ( ) UNLESS NOTED OTHERWISE.
  - TOP OF PIER - T.O.P. (-0'-0") - SEE S201 - TYPICAL UNLESS NOTED OTHERWISE.
  - SEE SHEET S001 FOR GENERAL NOTES.

**NOTE!**  
GENERAL CONTRACTOR SHALL COORDINATE ALL SOG OPENINGS AND DEPRESSIONS WITH WASTE2WATER, INC. DRAWINGS - TYPICAL

**NOTE!**  
SEE 7/S201 FOR CONCRETE CURB DETAILS - TYPICAL.

**NOTE!**  
PROVIDE SLAB CONSTRUCTION OR CONTROL JOINT @ 15'-0" MAXIMUM AT 6" SOG - SEE 1/S201 - TYPICAL.



**MAINTENANCE BUILDINGS**



**WGPM, Inc.**  
Proud - Diligent - Detail  
**STRUCTURAL ENGINEERING**  
11220 Elm Lane, Suite 201  
Charlotte, North Carolina 28271  
704.542.7100 Fax: 704.542.7195  
www.wgpm.com  
JOB NUMBER: 14-20  
NC License No. C-4302

**LS3P**

227 WEST TRADE STREET SUITE 700  
CHARLOTTE, NORTH CAROLINA 28202  
TEL. 704.333.6686 FAX 704.333.2926  
WWW.LS3P.COM

MEMBERS OF THE AMERICAN INSTITUTE OF ARCHITECTS  
COPYRIGHT 2020 ALL RIGHTS RESERVED  
PRINTED OR ELECTRONIC DRAWINGS AND DOCUMENTATION MAY NOT BE REPRODUCED IN ANY FORM WITHOUT WRITTEN PERMISSION FROM LS3P ASSOCIATES LTD.

REVISIONS:

No.	Description	Date

PROJECT: 9600-197950  
DATE: 19 JUNE 2020  
DRAWN BY: HLW  
CHECKED BY: HLW

**PHASE 3 - FOUNDATION PLAN**

**S-103**