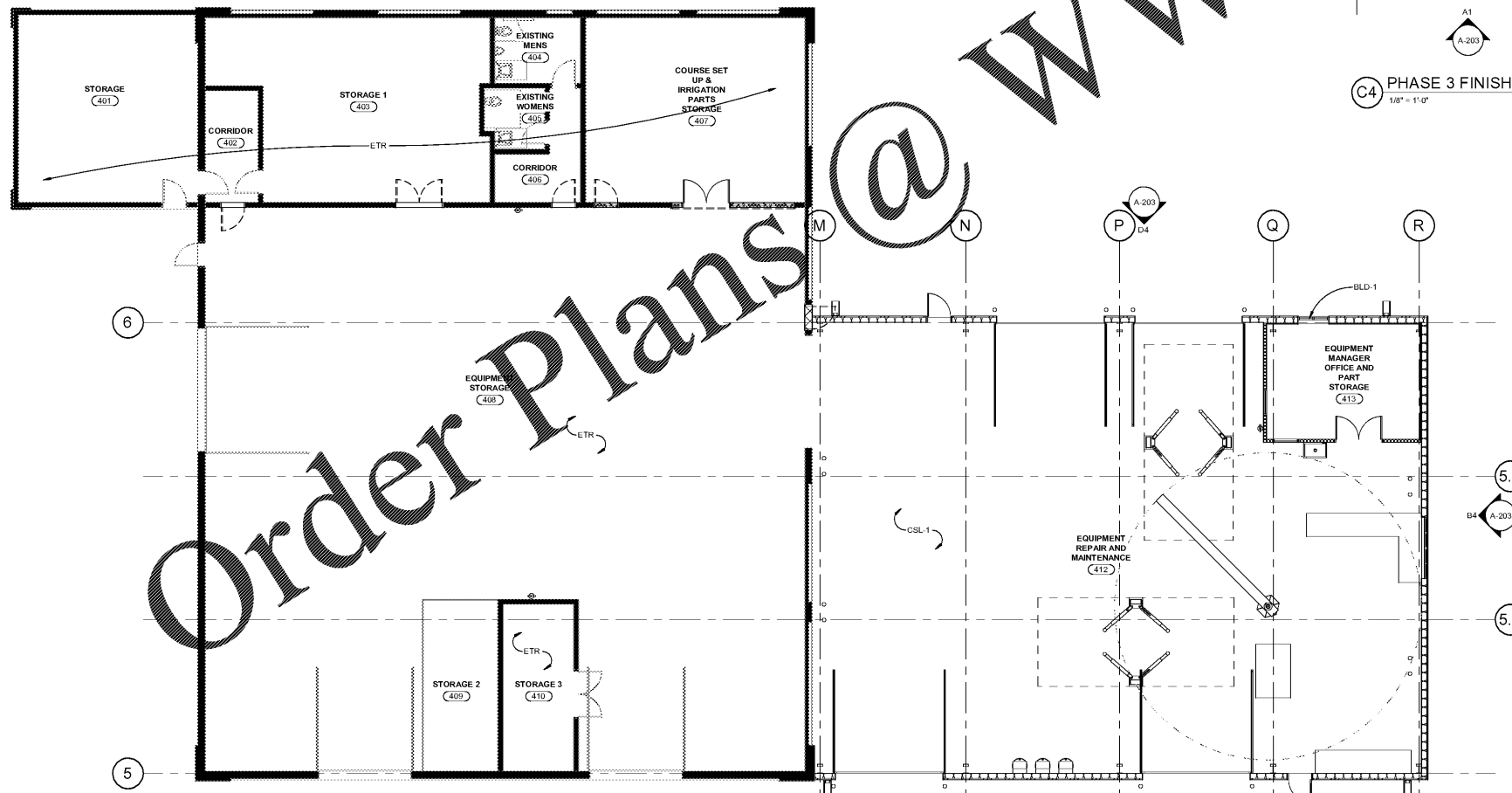
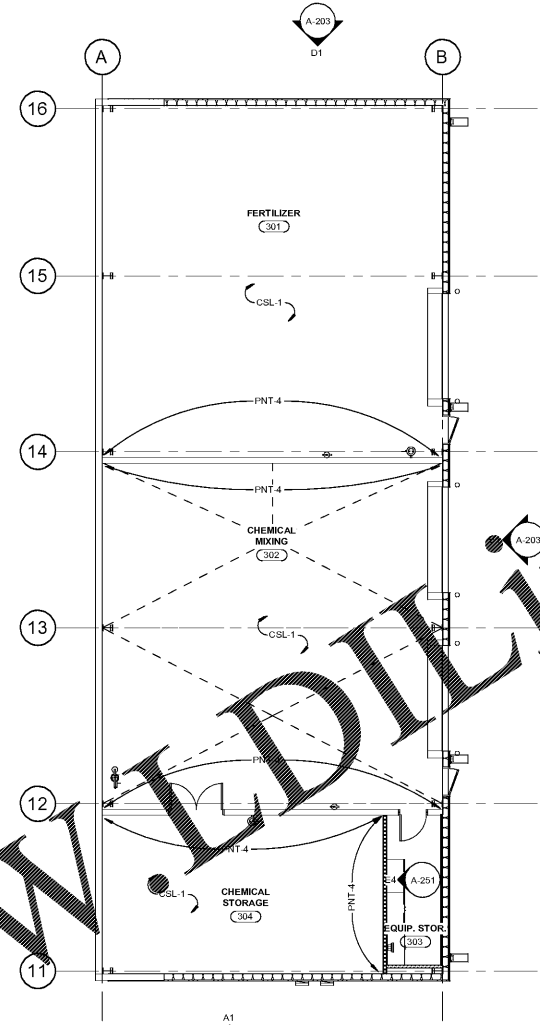


BIM 360/Quail Hollow Maintenance Facilities/Arch\_OHC Maintenance Buildings\_2018.rvt  
 6/29/2020 9:36:12 PM



**A1** PHASE 4 FINISH PLAN  
1/8" = 1'-0"



**C4** PHASE 3 FINISH PLAN  
1/8" = 1'-0"

**ROOM FINISH PLAN SHEET NOTES**

1. SEE A-720 FOR FINISH LEGEND & SCHEDULE
2. SEE FINISH SCHEDULE AND INT. ELEVATIONS ON A-251 & A-252 FOR ADDITIONAL FINISH INFORMATION
3. PRIOR TO INSTALLATION AND FABRICATION, CONTRACTOR SHALL COORDINATE WITH ARCHITECT AND INTERIOR DESIGNER TO REVIEW ALL FLOOR PATTERNS, FINISHES AND DOCUMENTATION INFORMATION
4. PRIOR TO PAINTING, PAINTING CONTRACTOR SHALL SUBMIT TO ARCHITECT/INTERIOR DESIGNER EACH PAINT COLOR FINISH ON A 8 1/2" X 11" SHEET OF CHESSBOARD FOR PRELIMINARY APPROVAL. FOR FINAL APPROVAL BY OWNER AND ARCHITECT PRIOR TO PAINTING, THE PAINTING CONTRACTOR SHALL PAINT EACH PAINT COLOR WITH THE DESIGNATED FINISH ON A 4" X 4" PIECE OF GYPSUM BOARD. SAMPLE BOARDS SHALL BE REVIEWED AND APPROVED AT THE JOB SITE WITH THE APPROPRIATE LIGHTING.
5. INSTALLERS OF EACH FINISH MATERIAL SHALL INSPECT BOTH THE SUBSTRATE AND CONDITIONS UNDER WHICH WORK IS TO BE PERFORMED. INSTALLER SHALL NOT PROCEED UNTIL UNSATISFACTORY CONDITIONS HAVE BEEN CORRECTED IN AN ACCEPTABLE MANNER TO ALL PARTIES AND MEET ALL MANUFACTURERS REQUIREMENTS
6. ALL INTERIOR FINISHES SHALL COMPLY WITH SECTION 803 OF RESTRICTIONS OF COMBUSTIBLE MATERIALS OF THE INTERNATIONAL BUILDING CODE. ALL INTERIOR FINISHES SHALL BE CLASS B OR BETTER
7. THE INTENT IS TO PROVIDE A COMPLETE FINISH CONTRACTOR WHETHER OR NOT SPECIFICALLY INDICATED. ITEMS SHALL BE FINISHED PRIOR TO PAINTING AS DIRECTED BY DESIGNER, WHETHER OR NOT SPECIFICALLY SCHEDULED OR INDICATED ON DRAWINGS
8. TILE SUBCONTRACTOR SHALL USE TILE MANUFACTURER'S RECOMMENDED SETTING BED PER MANUFACTURER'S RECOMMENDATIONS UNLESS OTHERWISE NOTED
9. INSTALL ALL VERTICAL JOINTS ON TILE IN THE SAME DIRECTION UNLESS OTHERWISE NOTED
10. PAINT ALL ROSES AND BEHIND WOOD BLOCKING AND METAL SUPPORTS TO MATCH ADJACENT SURFACES. COORDINATE WITH INTERIOR DESIGNER & ARCHITECT
11. PAINTED FINISH SURFACES SHALL BE SMOOTH, CLEAR AND FREE OF ALL BRUSH MARKS
12. ADHESIVE FOR WALL COVERING SHALL BE STRIPPABLE, MILDEW RESISTANT AND NON-STAINING PER MANUFACTURER'S REQUIREMENTS
13. WALL COVERING SHALL BE WRAPPED AT LEAST 2" AROUND OUTSIDE CORNERS. MATCH ALL PATTERN AT SEAMS
14. WHERE WOOD BASE IS SPECIFIED, CAULK AT TOP OF BASE AND WALL WITH COLORED CAULK TO MATCH WOOD STAIN
15. INSTALL TRANSITION STRIP AT THRESHOLD WHERE DIFFERING FLOORING MATERIALS ADJUT, UNLESS OTHERWISE NOTED. COORDINATE COLOR FINISH WITH DESIGNER
16. PAINT METAL WALL MOUNTED ACCESS DOORS, GRILLES, RETURN AIR GRILLES, COVER PLATES, FAN COIL UNITS, FIRE EQUIPMENT CABINETS, AND ELECTRICAL CABINETS TO MATCH ADJACENT SURFACE UNLESS OTHERWISE NOTED.
17. ALL FLOOR FINISH CHANGES SHALL OCCUR AT THE CENTER LINE OF CLOSED DOORS, U.N.O.
18. FLOOR PATTERN TO CONTINUE UNDER ALL OPEN WOODWORK/ WORKSURFACES.
19. FLOORING CONTRACTOR SHALL MAKE ADJUSTMENTS TO ACCOMMODATE FOR ANY DIFFERENCES IN THE PILE HEIGHT OF THE CARPET.
20. PRIOR TO ORDERING, SUB CONTRACTORS FOR FLOORING, PAINTING, AND MILLWORK SHALL SUBMIT TO ARCHITECT, INTERIOR DESIGNER AN 8" X 8" SAMPLE OF EACH MATERIAL SPECIFIED FOR FINAL APPROVAL.
21. IF ANY DISCREPANCIES OR OMISSIONS ARE NOTED IN THESE DRAWINGS, CONTACT INTERIOR DESIGNER OR ARCHITECT PRIOR TO ORDERING OR COMMENCING WORK.
22. IT IS THE RESPONSIBILITY OF THE CONTRACTOR TO CHECK LEAD TIMES ON FINISHES IN ORDER TO AVOID DELAYING WORK.
23. ALIGN GROUT JOINTS AT FLOOR, BASE, AND WALL TILE. TILE INSTALLER TO USE RANDOM BREAKAWAY LEVELING SYSTEM CLIPS & WEDGES OR EQUAL. INSTALLER TO USE PROPER LEVELING SPACERS IN ORDER TO OBTAIN GROUT JOINT SIZE SPECIFIED BY ARCHITECT OR INTERIOR DESIGNER.

**ROOM FINISH NOTES**

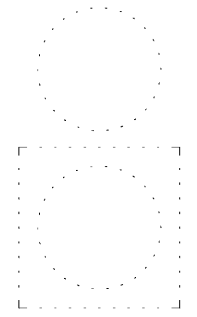
1. ALIGN CENTERLINE OF WALL MOUNTED MIRRORS WITH THE LAVATORIES ABOVE WHICH THEY ARE TO BE INSTALLED, U.N.O.
2. REFER TO FINISH LEGEND & SCHEDULE ON A-720 FOR ALL FINISHES.
3. REFER TO INTERIOR ELEVATIONS & A-401 FOR TOILET ACCESSORY TAGS NOT INDICATED IN ROOM FINISH DRAWINGS
4. ALL FLOOR PATTERNS CONTINUOUS UNDER ALL CASWORK/FURNITURE.
5. SEE SHEET A-601 FOR FLOORING TRANSITION DETAILS.
6. SEE SHEET A-401 FOR STANDARD MOUNTING HEIGHTS



**MAINTENANCE BUILDINGS**



227 WEST TRADE STREET SUITE 700  
 CHARLOTTE, NORTH CAROLINA 28202  
 TEL. 704.333.8686 FAX 704.333.2926  
 WWW.LS3P.COM



MEMBERS OF THE AMERICAN INSTITUTE OF ARCHITECTS  
 COPYRIGHT 2020 ALL RIGHTS RESERVED  
 PRINTED OR ELECTRONIC DRAWINGS AND DOCUMENTATION MAY NOT BE REPRODUCED IN ANY FORM WITHOUT WRITTEN PERMISSION FROM LS3P ASSOCIATES LTD.

**REVISIONS:**

No.	Description	Date

PROJECT: 9606-197950  
 DATE: 19 JUNE 2020  
 DRAWN BY: Author  
 CHECKED BY: Checker

**PHASE 3 & 4  
 FINISH PLANS**

**A-724**