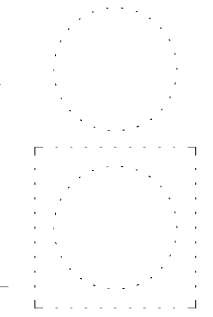




MAINTENANCE BUILDINGS



227 WEST TRADE STREET SUITE 700
CHARLOTTE, NORTH CAROLINA 28202
TEL. 704.333.8686 FAX 704.333.2926
WWW.LS3P.COM



MEMBERS OF THE AMERICAN INSTITUTE OF ARCHITECTS
COPYRIGHT 2020 ALL RIGHTS RESERVED
PRINTED OR ELECTRONIC DRAWINGS AND
DOCUMENTATION MAY NOT BE REPRODUCED
IN ANY FORM WITHOUT WRITTEN PERMISSION
FROM LS3P ASSOCIATES LTD.

REVISIONS:

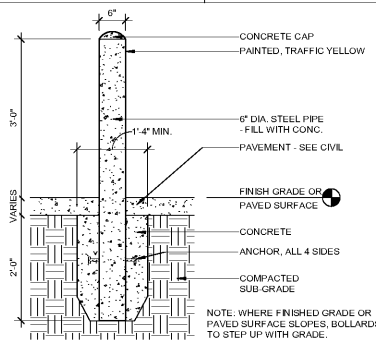
No.	Description	Date

PROJECT: 9606-197950
DATE: 19 JUNE 2020
DRAWN BY: Author
CHECKED BY: Checker

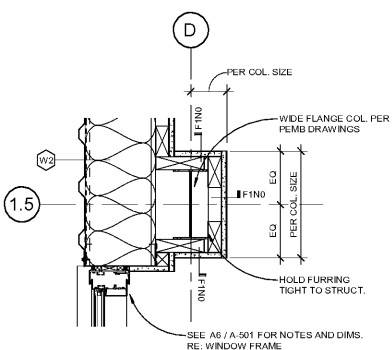
PLAN DETAILS

A-501

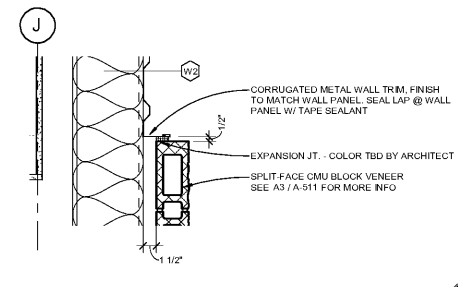
WWW.LDILine.com



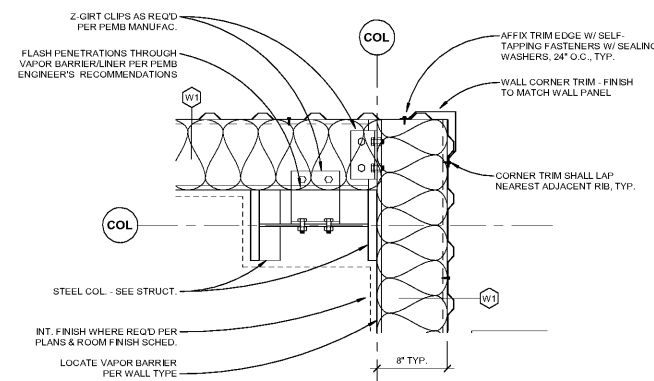
E1 BOLLARD DETAIL
3/4" = 1'-0"



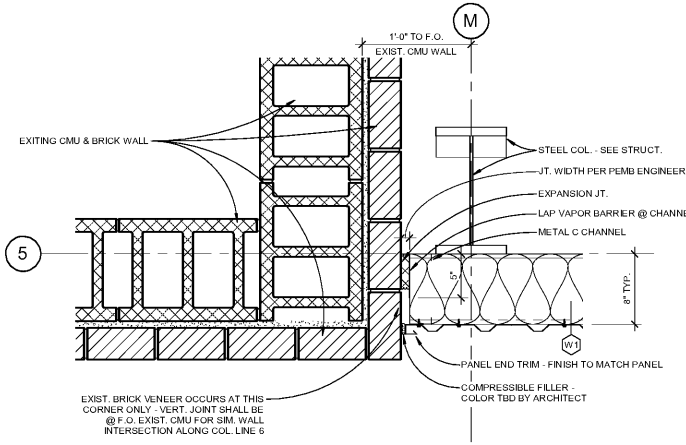
B1 PLAN DTL @ COL D1.5
1 1/2" = 1'-0"



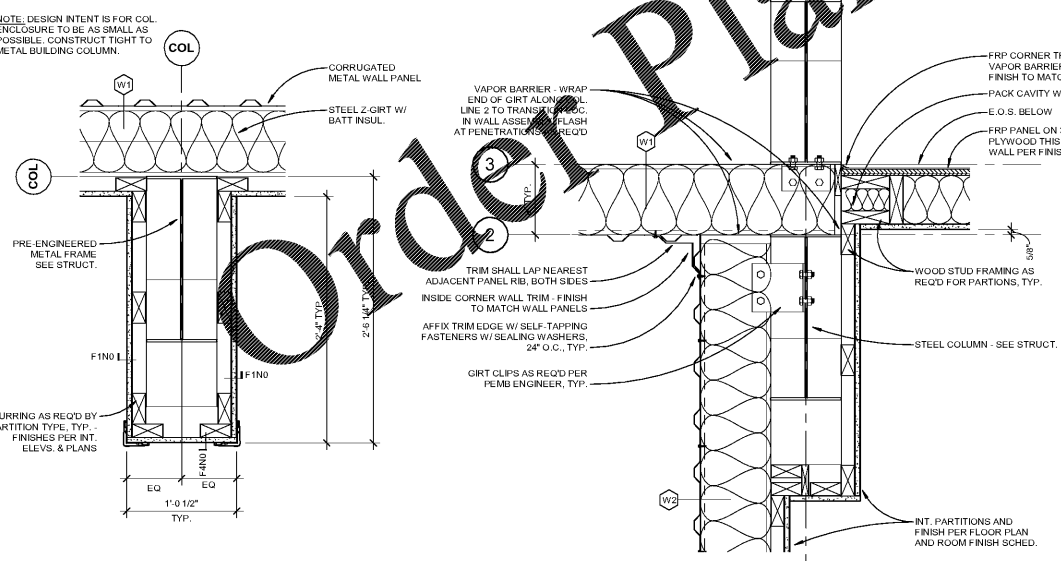
C2 VERT. JT. @ CMU VENEER & METAL PANEL
1 1/2" = 1'-0"



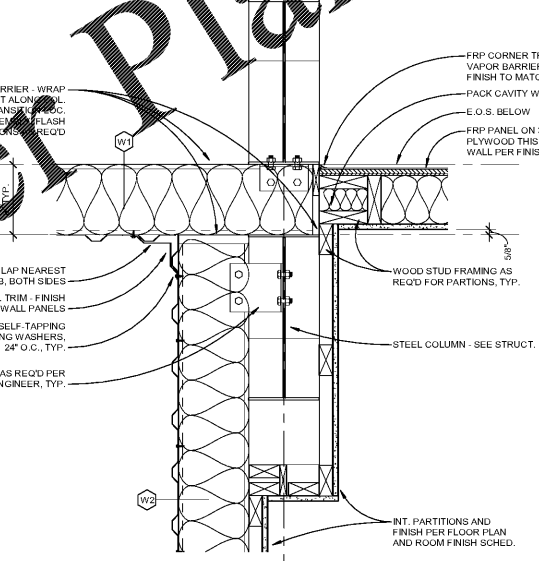
B3 TYP. EXT. CORNER DETAIL
1 1/2" = 1'-0"



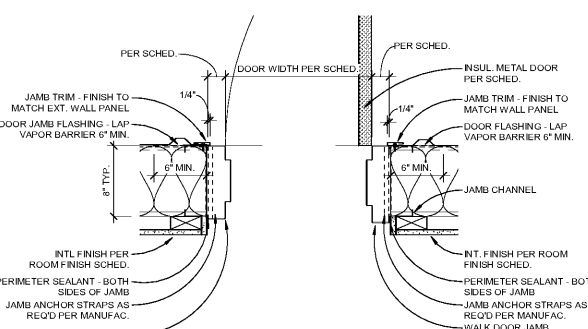
B6 PHASE 4 VERT. JT. @ EXIST. BLDG
1 1/2" = 1'-0"



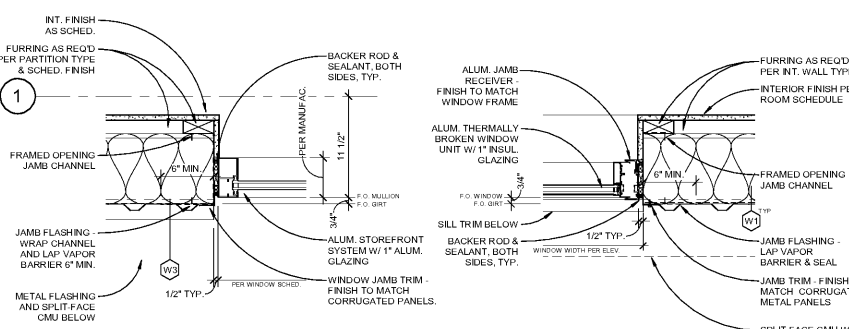
A1 TYP. METAL COLUMN WRAP
1 1/2" = 1'-0"



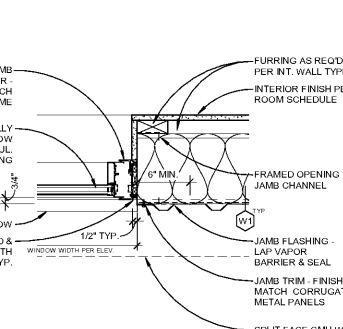
A2 PHASE 2 INSIDE CORNER
1 1/2" = 1'-0"



A3 TYP. EXT. DOOR JAMB
1 1/2" = 1'-0"



A5 STOREFRONT JAMB DETAIL
1 1/2" = 1'-0"



A6 TYP. WINDOW JAMB
1 1/2" = 1'-0"

B:\M\Quail Hollow Maintenance Facilities\Arch_OHC Maintenance Buildings_2018.rvt
6/29/2020 9:35:51 PM