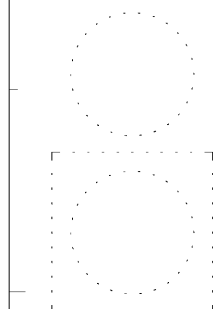




MAINTENANCE BUILDINGS



227 WEST TRADE STREET SUITE 700
CHARLOTTE, NORTH CAROLINA 28202
TEL. 704.333.8888 FAX 704.333.2926
WWW.LS3P.COM



MEMBERS OF THE AMERICAN INSTITUTE OF ARCHITECTS

COPYRIGHT 2020 ALL RIGHTS RESERVED
PRINTED OR ELECTRONIC DRAWINGS AND
DOCUMENTATION MAY NOT BE REPRODUCED
IN ANY FORM WITHOUT WRITTEN PERMISSION
FROM LS3P ASSOCIATES LTD.

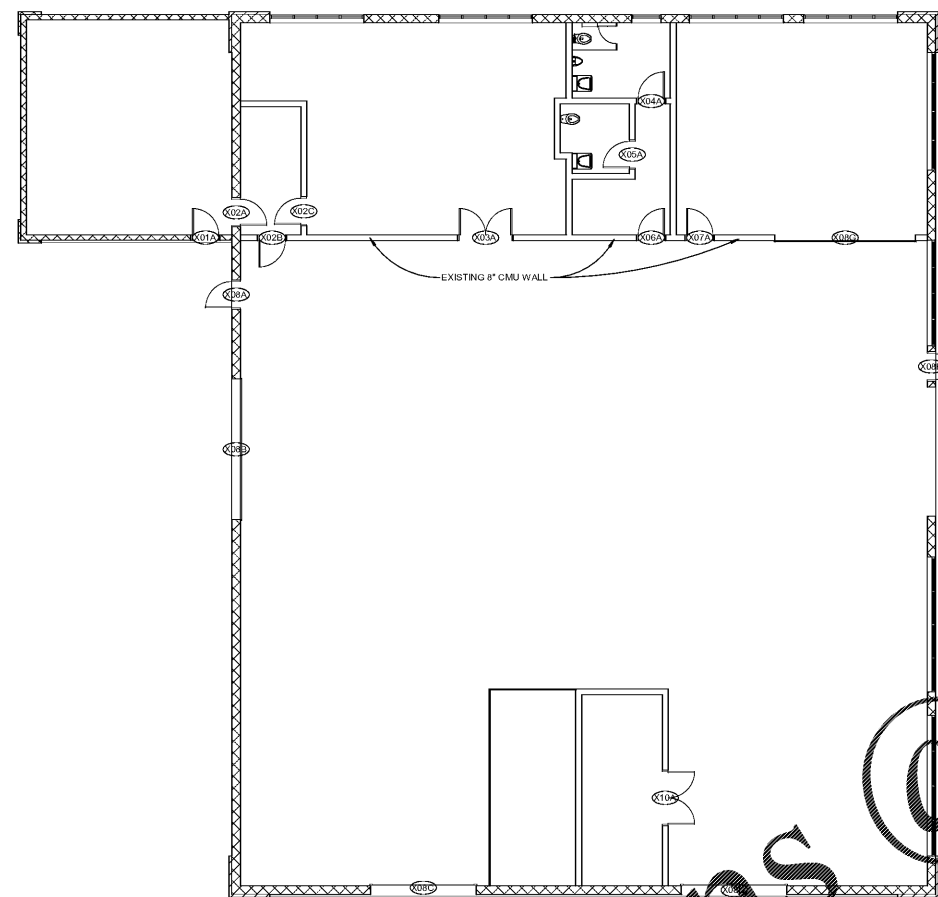
REVISIONS:

No.	Description	Date

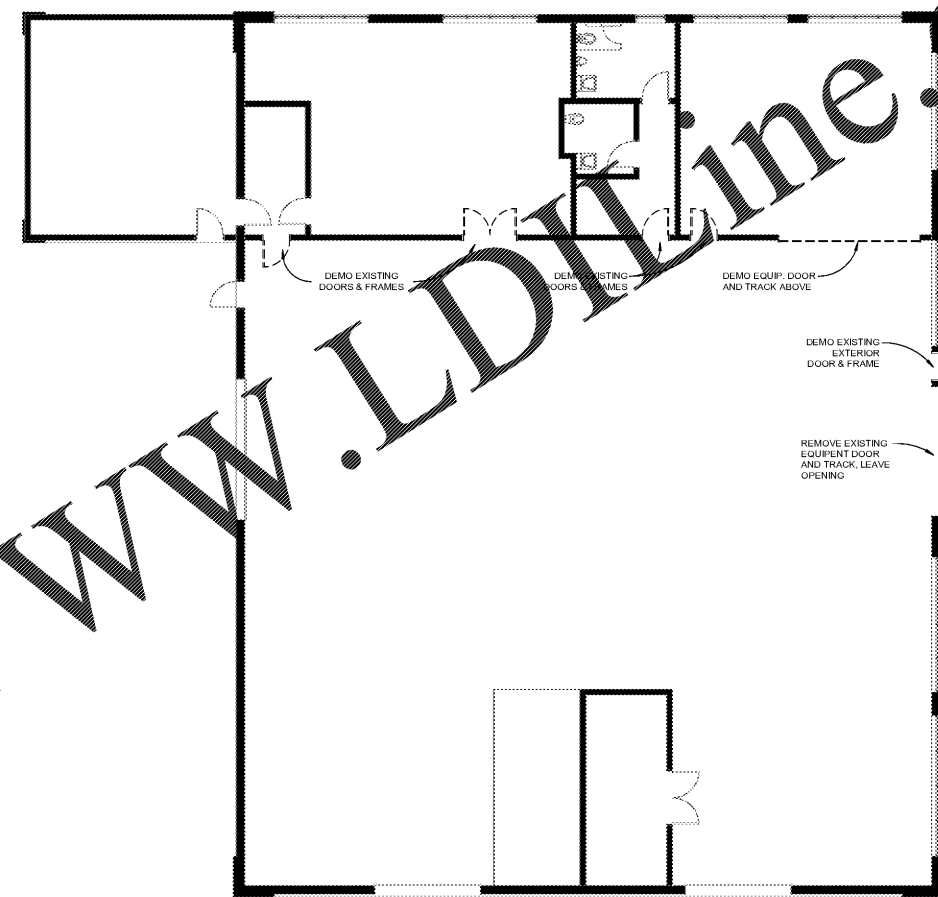
PROJECT: 9606-197950
DATE: 19 JUNE 2020
DRAWN BY: Author
CHECKED BY: Checker

PHASE 4 -
EXISTING AND
DEMO PLAN

A-104A



B1 EXISTING FIRST FLOOR PLAN
1/8" = 1'-0"



B4 DEMO FIRST FLOOR PLAN
1/8" = 1'-0"

DEMOLITION PLAN SHEET NOTES

- GOLF COURSE MAINTENANCE WORK IS TO OPERATE CONTINUOUSLY DURING CONSTRUCTION. SCHEDULE WORK TO COORDINATE WITH EXISTING OPERATIONS.
- DEMOLITION DRAWINGS ARE INTENDED TO SHOW GENERAL AREAS OF DEMOLITION AS WELL AS GENERAL EXISTING CONDITIONS. THEY DO NOT SHOW ALL WORK WHICH MAY BE NECESSARY. COMPARE WITH DRAWINGS INDICATING NEW CONSTRUCTION.
- REFER TO OTHER DRAWINGS AND SPECIFICATIONS FOR ADDITIONAL INFORMATION ON DEMOLITION. REFER TO MECHANICAL AND ELECTRICAL DRAWINGS FOR ADDITIONAL INFORMATION ON MECHANICAL AND ELECTRICAL DEMOLITION.
- EXISTING WORK TO REMAIN SHALL BE TEMPORARILY SECURED, BRACED AND STABILIZED UNTIL PERMANENT CONSTRUCTION IS IN PLACE.
- VERIFY FIELD CONDITIONS PRIOR TO START OF DEMOLITION/CONSTRUCTION AND NOTIFY THE ARCHITECT OF ANY DISCREPANCIES.
- VERIFY THAT CONSTRUCTION INDICATED FOR REMOVAL IS NOT LOAD BEARING OR IS ADEQUATELY SHORED PRIOR TO STARTING ANY WORK.
- ERECT BARRICADES, FENCES OR OTHER SECURABLE MEANS TO PREVENT UNAUTHORIZED ACCESS INTO CONSTRUCTION ZONES.
- DO NOT ALLOW MATERIAL AND DEBRIS GENERATED BY DEMOLITION ACTIVITIES TO ACCUMULATE ON THE JOB SITE. REMOVE DAILY AND DISPOSE OF IN A LEGAL MANNER. NO ON-SITE SALE OR BURNING OF REMOVED ITEMS IS PERMITTED.
- THE CONTRACTOR MUST MAINTAIN ADEQUATE SUPPORT INSULATION, WATERPROOFING, EMERGENCY LIGHTING, SECURITY, ALARMS, ETC. FOR ALL OR PART OF ITEMS WHICH ARE TO REMAIN.
- TERMINATE AND CAP ANY UTILITY IN WALLS, CEILINGS AND FLOORS TO BE REMOVED AND NOT INTENDED FOR REUSE.
- PREPARE AND PATCH SURFACES THAT RECEIVE NEW FINISHES AS REQUIRED BY REMOVING OR RELOCATING DEVICES, WIRING OR OTHER APPURTENANCES NO LONGER APPROPRIATE FOR THE NEW USE OF THE ROOM.
- MAINTAIN EXISTING FINISHES, OPERATIONAL CHARACTERISTICS, AND APPEARANCE OF ITEMS SCHEDULED TO REMAIN OR BE REUSED.

Order Plans @ www.LDOnline.com