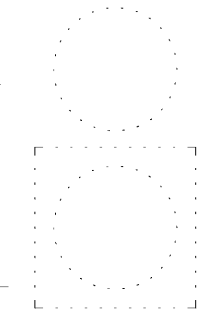




MAINTENANCE BUILDINGS



227 WEST TRADE STREET SUITE 700  
CHARLOTTE, NORTH CAROLINA 28202  
TEL. 704.333.8686 FAX 704.333.2926  
WWW.LS3P.COM



MEMBERS OF THE AMERICAN INSTITUTE OF ARCHITECTS  
COPYRIGHT 2020 ALL RIGHTS RESERVED  
PRINTED OR ELECTRONIC DRAWINGS AND  
DOCUMENTATION MAY NOT BE REPRODUCED  
IN ANY FORM WITHOUT WRITTEN PERMISSION  
FROM LS3P ASSOCIATES LTD.

REVISIONS:

No.	Description	Date

PROJECT: 9606-197950  
DATE: 19 JUNE 2020  
DRAWN BY: Author  
CHECKED BY: Checker

PHASE 1 -  
FIRST FLOOR  
PLAN

A-101

ALL FLOOR PLAN SHEET NOTES

- EXTERIOR DIMENSIONS ARE TO FACE OF GIRTS AND EXCLUDE EXTERIOR PANELING DEPTH.
- INTERIOR DIMENSIONS INDICATED ARE TO FACE OF GYP. (EXCLUDE FINISH) AND CENTERLINES OF COLUMNS, UNO.
- ALL EXTERIOR WALLS SHALL BE TYPE W1 U.N.O.
- LOCATE DOOR FRAMES 4" FROM NEAREST PERPENDICULAR WALL, UNLESS DIMENSIONED OTHERWISE.
- SOUND RATED WALLPARTITIONS TO BE CONSTRUCTED TIGHT TO STRUCTURE, PIPING, DUCTWORK AND OTHER PENETRATIONS. ALL WORK IS TO BE BRACED TO STRUCTURE ABOVE.
- INSTALL BLOCKING IN PARTITIONS FOR CASEWORK, WALL MOUNTED EQUIPMENT, TRIM AND RELATED CONSTRUCTION.
- SEE LIFE SAFETY PLANS FOR REQUIRED FIRE SEPARATION WALLS.
- SEE SHEET A-002 FOR DOOR WINDOW & CLAZING TYPES.
- SEE SHEET A-002 FOR CONSTRUCTION SUBSYSTEMS.
- SEE SHEET A-003 FOR PARTITION TYPES.
- SEE SHEETS A-251, A-252, A-741 & A-761 FOR CASEWORK ELEVATIONS & DETAILS.
- SEE SHEET A-251 & A-252 FOR INTERIOR ELEVATIONS, ACCESSORY DESCRIPTIONS & MOUNTING HEIGHTS.
- SEE SHEETS A-722 & A-724 FOR FINISH FLOORING, TRANSITIONS, PATTERNS AND WALL PROTECTION.
- SEE SHEET A-700 FOR FINISH SCHEDULE.
- SEE SHEETS A-401 FOR ENLARGED PLANS INDICATING ADDITIONAL DIMENSIONS AND PARTITION TYPES, AND STD. MOUNTING HEIGHTS.
- SEE STRUCTURAL DRAWINGS FOR SLAB DEPRESSIONS AND JOINTS.
- SEE BUILDING ELEVATION DRAWINGS FOR LOCATION OF MASONRY CONTROL JOINTS.
- SLAB AND FLOOR ELEVATIONS SHOWN ARE RELATIVE TO EACH BUILDING / PHASE. SEE CIVIL PLANS FOR EXACT FLOOR ELEVATIONS.

PARTITION NOTES

- ALL NON DESIGNATED PARTITION TYPES SHALL BE TYPE A4SX.
- THE BACKER BOARD SHALL BE USED IN ALL LOCATIONS TO RECEIVE TILE FINISHES. REFER TO INTERIOR ELEVATIONS FOR LOCATIONS.
- CONTRACTOR SHALL COORDINATE WITH MECHANICAL DUCTWORK PRIOR TO ABRICATION OF GYPSUM WALLS.
- STUDS SHALL BE INSTALLED WHERE A WALL IS UNABLE TO GO STRAIGHT UP TO STRUCTURE DUE TO PIPING, DUCTWORK, ETC., THE PARTITION GYPSUM BOARD AND FRAMING MAY JOG HORIZONTALLY ABOVE THE CEILING TO AVOID THE PENETRATED WALL INTEGRITY SHALL BE MAINTAINED.
- WHERE STUDS EXTEND TO STRUCTURE AND GYPSUM WALLBOARD AND SOUND PENETRATION BLANKETS EXTEND JUST ABOVE THE FINISH CEILING, CAP-OFF PARTITION FINISHES WITH A RUNNER CHANNEL, WHEN CEILING PLENUM IS USED AS A RETURN AIR PLENUM.
- DIMENSIONAL CONFLICTS BETWEEN PARTITION TYPES AND THE ARCHITECTURAL FLOOR PLANS SHALL BE BROUGHT TO THE ATTENTION OF THE ARCHITECT.
- SEE LIFE SAFETY PLANS FOR THE LOCATIONS OF SMOKE BARRIERS, SMOKE PARTITIONS AND FIRE RATED PARTITIONS.
- REFER TO UNDERWRITERS LABORATORIES, INC. FIRE RESISTANCE VOLUMES - CURRENT EDITION FOR SPECIFIC CONSTRUCTION REQUIREMENTS OF U.L. LISTED ASSEMBLIES.
- REFER TO MECHANICAL, ELECTRICAL AND PLUMBING DRAWINGS FOR TYPICAL U.L. LISTED PENETRATIONS THROUGH FIRE RATED ASSEMBLIES. CONTRACTOR SHALL BE RESPONSIBLE FOR PROVIDING APPROPRIATE PROJECT SPECIFIC U.L. LISTED ASSEMBLIES FOR PENETRATIONS.
- ALL PIPE AND CONDUIT PENETRATIONS THRU 2 HR RATED OR MORE PARTITIONS, FLOORS, ROOF, ETC. SHALL BE SEALED WITH A RESPECTIVELY RATED FIRE BARRIER PENETRATION SEALING SYSTEM BY 3M OR U.L. APPROVED EQUAL.
- AT ALL EXISTING AND CONSTRUCTED PARTITIONS THE CONTRACTOR IS TO MAINTAIN THE FIRE RESISTIVE INTEGRITY.

GENERAL NOTES

- THE CHEMICAL/FERTILIZER STORAGE AND WASH-FULL BUILDINGS' STRUCTURES ARE TO BE HOT DIP GALVANIZED.
- GALVANIZED STRUCTURAL MEMBERS NOT ARE TO BE GALVANIZED DURING THE PRIMARY AND SECONDARY ABRICATION PROCESSES.
- EXTERIOR PANELS ARE TO RUN VERTICALLY, CONTINUOUSLY FROM SLAB UP TO ROOF LINE IN SINGLE PANEL WITH NO HORIZONTAL JOINTS, SEAMS, OR LAPS.

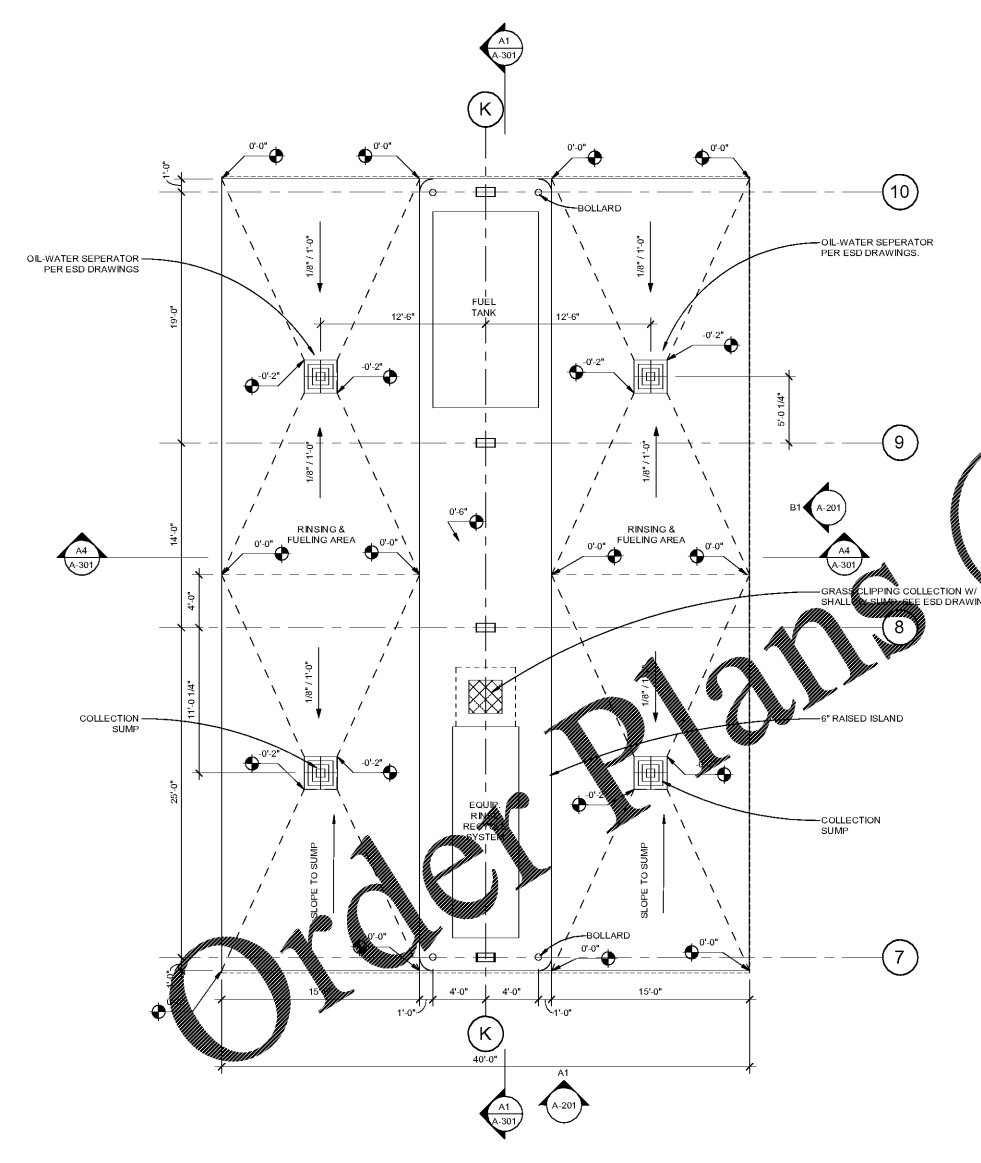
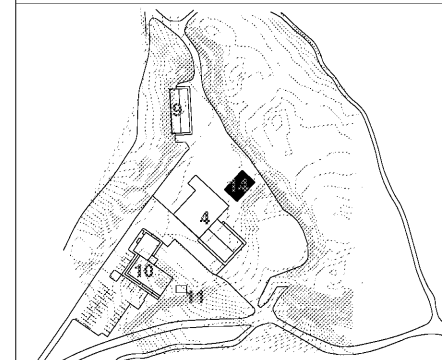
ALTERNATES

- ADD, DELETE INTERMEDIATE COLUMN LINE "D" IN CART STORAGE. SPAN CART STORAGE WITH 40 FOOT BAY FROM COL. LINE "C" TO "E". MOVE EQUIPMENT BAY DOOR PLAN EAST TO CENTER BETWEEN COL. LINE "C" AND "E".
- ADD, INTERIOR METAL WALL PANELS TO FIRST CRT ABOVE THE FINISHED FLOOR.
- DEDUCT, DELETE INSULATION IN ROOM 230 "CART STORAGE" IN EXTERIOR WALLS AND ROOF.
- ADD, PROVIDE INTAKE / DUCTWORK / EXHAUST TO ACCOMMODATE TEMP. CONDITIONING EQUIP. SEE M-102.
- ADD, REPAINT EXTERIOR OF EXISTING PHASE 4 BUILDING.
- ADD, REPAINT INTERIOR OF EXISTING PHASE 4 BUILDING. SCOPE INCLUDES ONLY THOSE SURFACES WITH EXISTING PAINT. EXISTING UNPAINTED SURFACES ARE EXCLUDED.
- NOT USED.
- ADD, 12" WIDE x 8" TALL COILING EQUIPMENT OVERHEAD DOOR IN LIEU OF DOOR 230A. INSULATED, LOCKABLE. NO VIEWPORTS NEEDED. COIL AND MOTOR MOUNTED ON ROOM 230 SIDE.
- DEDUCT, REPLACE ALUMINUM WINDOW "A" WITH VINYL WINDOWS.

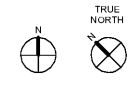
PARTITION LEGEND

- ALL EXTERIOR WALLS TO BE W1 U.N.O.
  - ALL INTERIOR MASONRY PARTITIONS TO BE U.N.O.
  - ALL INTERIOR STUD PARTITIONS TO BE TYPE A4SX U.N.O.
- NON RATED PARTITION TO CEILING
  - NON RATED PARTITION TO 4' ABOVE CEILING
  - NON RATED PARTITION TO DECK
  - 1 HR. RATED PARTITION TO DECK
  - 2 HR. RATED PARTITION TO DECK
  - 4 HR. RATED PARTITION TO DECK
- NOTE: SEE SHEET A003 FOR CONSTRUCTION OF PARTITION TYPES.

KEY PLAN



A1 FIRST FLOOR PLAN  
3/16" = 1'-0"



www.LDILine.com

Order Plans

B:\M\360\Quail Hollow Maintenance Facilities\Arch\_OHC\Maintenance Buildings\_2018.rvt  
6/29/2020 9:24:46 PM