

**PLANTING REQUIREMENTS:**

**INTERNAL TREE REQUIREMENT:**

TOTAL SITE AREA = 11,211,473 SF (257.38 AC)  
INTERNAL PLANTING AREA REQUIRED = 4 NEW TREES  
INTERNAL TREES PROPOSED = 6 NEW TREES

**TREE COVERAGE:**

NEW PARKING AREA TREES = 40' RADIUS  
EXISTING PARKING AREA TREES = 60' RADIUS  
NEW TREES IN 8'+ CONTINUOUS STRIP = 60' RADIUS

**TREE SAVE AREA:**

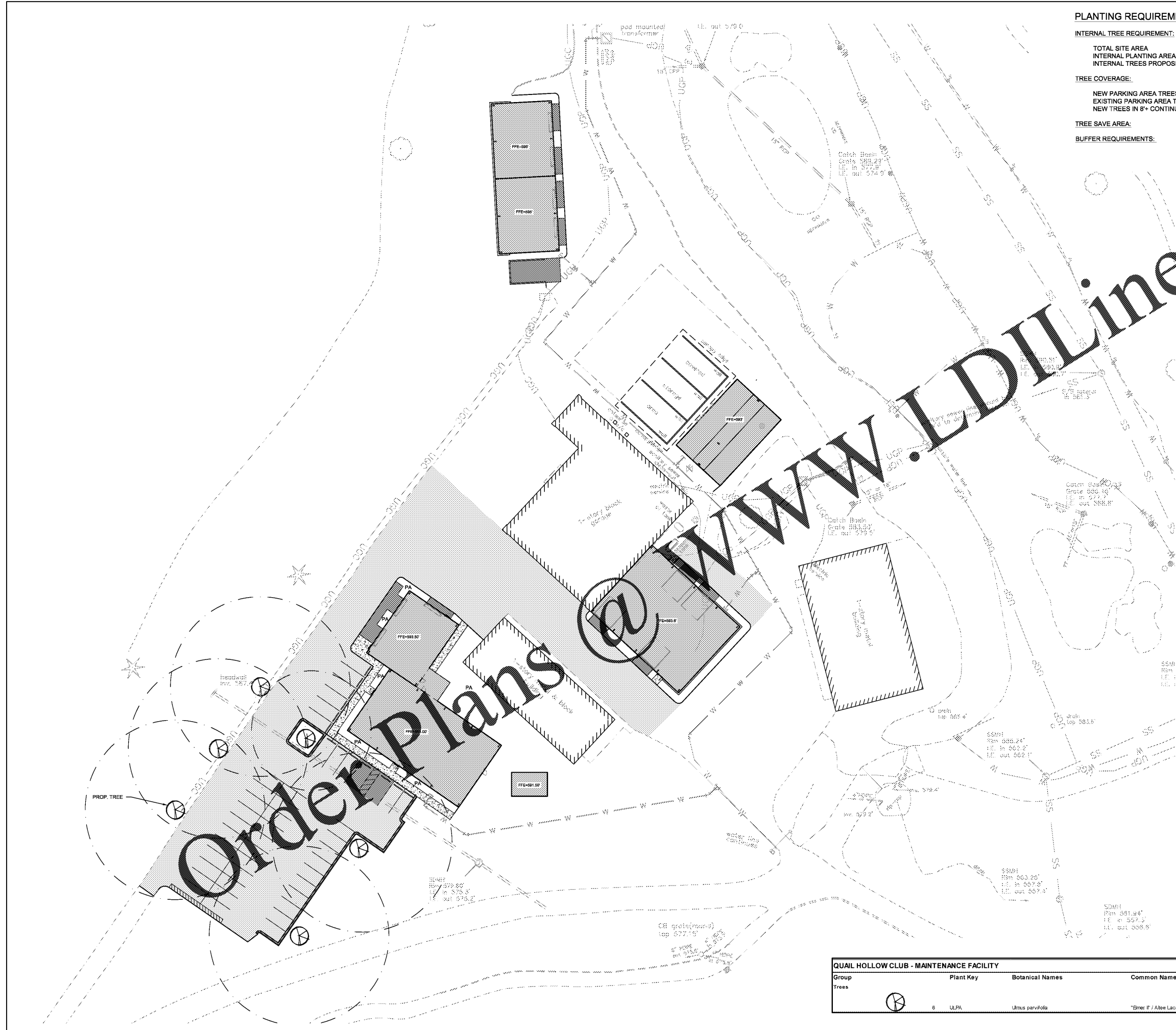
= N/A

**BUFFER REQUIREMENTS:**

= EXISTING BUFFER TO REMAIN UNDISTURBED WITH NEW ADDITIONS

**LEGEND**

	EX. TREE TO REMAIN
	PROP. TREE



KEY MAP



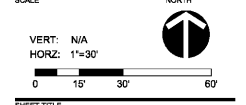
**QUAIL HOLLOW CLUB  
MAINTENANCE FACILITY**  
QUAIL HOLLOW CLUB  
CHARLOTTE, NC

UNDERDESIGN PROJ.# 1019501

**REVISION / ISSUANCE**

NO.	DESCRIPTION	DATE
1	LAND DEVELOPMENT SUBMITTAL	02.28.2020
2	LAND DEVELOPMENT SUBMITTAL 2	04.15.2020
3	ISSUED FOR CONSTRUCTION	06.26.2020

DESIGNED BY: LDJ  
DRAWN BY: LDJ  
CHECKED BY: LDJ



**PLANTING PLAN**

SHEET NUMBER

**C9-00**

**QUAIL HOLLOW CLUB - MAINTENANCE FACILITY**

Group	Plant Key	Botanical Names	Common Names	Plant Size	Root	Notes
Trees		<i>Ulmus parvifolia</i>	"Emer" F / Alice Lacebark Elm	8" Cal.	B&B	Well-branched, matched, specimen