

DEVELOPMENT SUMMARY:

TAX PARCEL NUMBERS:
- 20958101

SITE JURISDICTION:
- CITY OF CHARLOTTE

TOTAL SITE AREA:
- 11,211,473 SF (257.38 AC)

EXISTING ZONING:
- R-3

VEHICLE PARKING:
- EXISTING PARKING = 26 SPACES
- PROPOSED PARKING = 43 SPACES
= 2 ADA SPACES

PROPOSED GROSS FLOOR AREA: ±18,354 SQ. FT.

- ADMINISTRATION BUILDING: 4,500 SQ. FT.
- CART STORAGE: 200 SQ. FT.
- GREEN HOUSE: 200 SQ. FT.
- CANOPY: 2,000 SQ. FT.
- EQUIPMENT STORAGE & REPAIR ADDITION: 4,400 SQ. FT.
- COVERED EQUIPMENT CENTER: 2,400 SQ. FT.
- FERTILIZER STORAGE: 2,000 SQ. FT.
- CHEMICAL STORAGE: 2,000 SQ. FT.

LEGEND

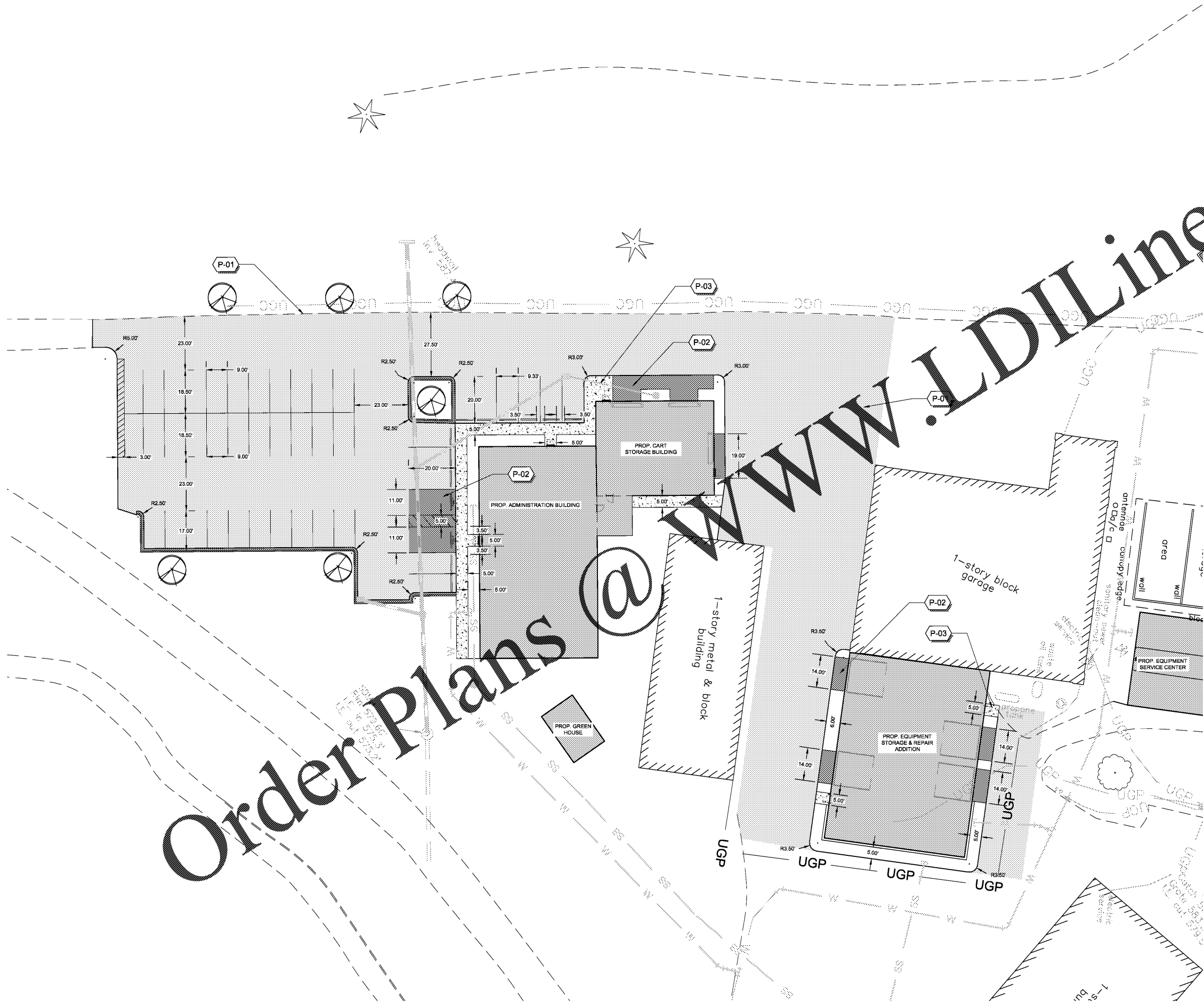
- - - - - EX. CONTOUR
- [Hatched] EX. STORM DRAIN
- [Circle with cross] EX. TREE TO REMAIN
- [Circle with cross] PROP. TREE
- [Dashed line with 'W'] PROP. WATER LINE
- [Dashed line with 'S'] PROP. SEWER LINE
- [Dashed line with 'UGP'] PROP. STORM DRAINAGE

PAVING SCHEDULE

SYMBOL	DESCRIPTION	DETAIL
[Hatched]	ASPHALT PAVING	1/C2-02
[Dotted]	STANDARD CONCRETE	3/C2-02
[Cross-hatched]	CONCRETE SIDEWALK	10/C2-02

GENERAL NOTE:

ALL SPOT ELEVATIONS ARE TAKEN FROM THE EDGE OF PAVEMENT. CURB AND GUTTER TO BE 1'-6" (TYP.)



Order Plans @

WWW.LDILine.com

KEY MAP

SEAL

C-0653

LANDDESIGN INC.

NORTH CAROLINA

REGISTERED PROFESSIONAL ENGINEER

DANIEL T. MELVIN

06/26/20

QUAIL HOLLOW CLUB

MAINTENANCE FACILITY

QUAIL HOLLOW CLUB

CHARLOTTE, NC

LANDDESIGN PROJ.# 1019501

REVISION / ISSUANCE

NO.	DESCRIPTION	DATE
1	LAND DEVELOPMENT SUBMITTAL	02.28.2020
2	LAND DEVELOPMENT SUBMITTAL 2	04.15.2020
3	ISSUED FOR CONSTRUCTION	06.26.2020

DESIGNED BY: LDI
DRAWN BY: LDI
CHECKED BY: LDI

SCALE: NORTH

VERT: N/A
HORZ: 1"=20'

0 10' 20' 40'

DETAILED SITE PLAN

SHEET NUMBER
C2-01