

TAKE 5 OIL CHANGE  
11909 E. MLK JR BLVD  
SEFFNER, FL 33584  
FOR:  
TAKE 5 OIL CHANGE / DRIVEN BRANDS  
CHARLOTTE NC

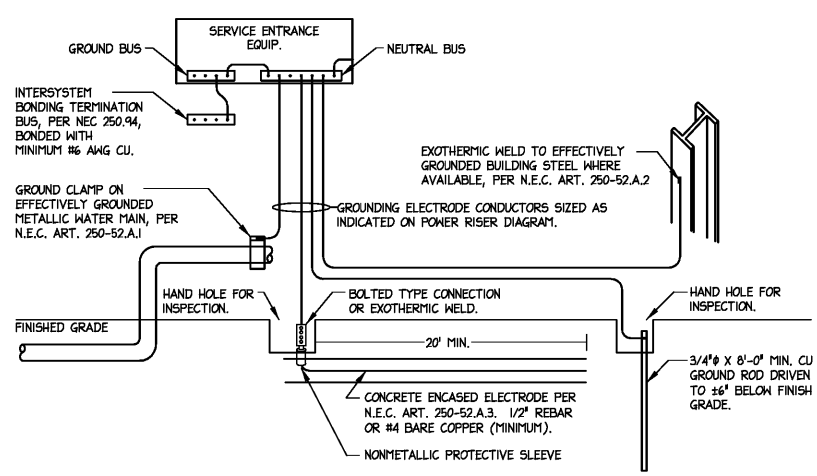
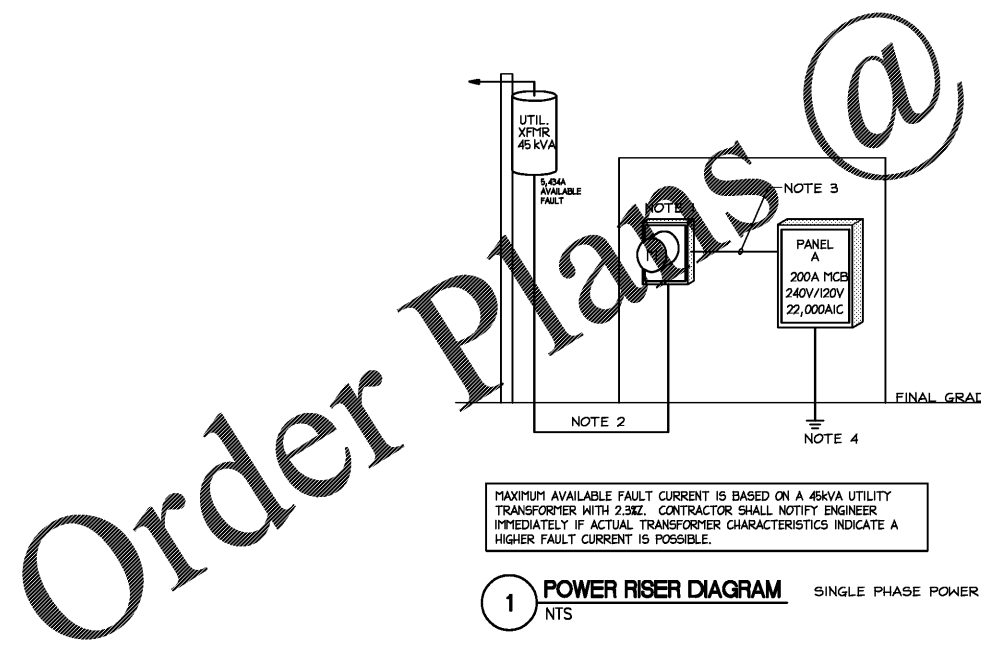
MAIN: 200A MCB		VOLTAGE: 240/120V		PHASE: 1		WIRE: 3		MOUNTING: SURFACE		ARC: 29K		NOTES:	
CKT #	TRIP	POLE	WIRE SIZE	CONDUIT SIZE	DESCRIPTION	LG	REC	MTR	A/G	HIG	MISC	PHASE	LOAD (KVA)
1	20	1	12	1.2"	PLYMOR SIGN (TD)							1.2	0.7
2	20	1	12	1.2"	SPARE							0.5	0.7
3	20	1	12	1.2"	REC - W/ WORK #3 (GF)	0.4						0.7	0.7
4	20	1	12	1.2"	REC - OFF SUPPLIES (GF)	0.6						0.8	0.8
5	20	1	12	1.2"	REC - SERVICE (GF)	1.0						0.4	0.4
6	20	1	12	1.2"	REC - WORK #1 (GF)	1.2						1.2	1.2
7	20	1	12	1.2"	RAIN COMPRESSOR					1.4			1.4
8	20	1	12	1.2"	SPACE							1.8	1.8
9	20	1	12	1.2"	EF-1							1.7	1.7
10	20	1	12	1.2"	TELE BOARD (LO) (EF)	0.4						0.5	0.5
11	20	1	12	1.2"	SPACE							1.2	1.2
12	20	1	12	1.2"	ELTS - EXTERIOR (EG)	0.2						1.2	0.8
13	20	1	12	1.2"	BE DR SHENAGE (TD)						1.2		0.8
14	20	2	12	1.2"	EWB-2				1.0			0.2	0.2
15	20	1	12	1.2"	REC - "OPEN" SIGN (TD)	0.4			1.0			0.2	0.2
16	20	1	12	1.2"	ROUTER	0.4						1.2	1.2
17	20	1	12	1.2"	ROUTER MEZZANINE	0.1						1.2	1.2
18	20	1	12	1.2"	SHDN (PC)	1.0						0.4	0.4
19	20	1	12	1.2"	SHDN (PC)	1.0						0.4	0.4

SINGLE PHASE POWER

**A DEMAND CALCS**

LIGHTING	3.33	KVA	X	100	%	=	3.33	KVA
RECEPTACLE TOTAL	8.12	KVA	X	100	%	=	8.12	KVA
RECEPTACLE	10.00	KVA	X	81.2	%	=	8.12	KVA
REMAIN	0.00	KVA	X	100	%	=	0.00	KVA
MOTOR	2.66	KVA	X	100	%	=	2.66	KVA
PTHP-1	4.74	KVA	X	100	%	=	4.74	KVA
PTHP-2	2.85	KVA	X	100	%	=	2.85	KVA
PTHP-3	0.00	KVA	X	100	%	=	0.00	KVA
MISCELLANEOUS	0.40	KVA	X	100	%	=	0.40	KVA
<b>TOTAL</b>	<b>132.0</b>	<b>amps</b>					<b>31.8</b>	<b>KVA</b>

SINGLE PHASE POWER



CHILDREY ROBINSON ASSOCIATES  
1212 KENILWORTH AVENUE  
CHARLOTTE, NORTH CAROLINA 28204  
PHONE: 704.370.6000 FAX: 704.370.6006  
www.childreyrobinson.com

SEALS

REVISIONS

REV.	DESCRIPTION

DATE: 06-24-2019

SHEET NAME: ELECTRICAL DETAILS

SHEET NUMBER: E-3

2019-01-10-10:00 AM, Printed By: wjg  
Jun 24, 2019 10:06 AM