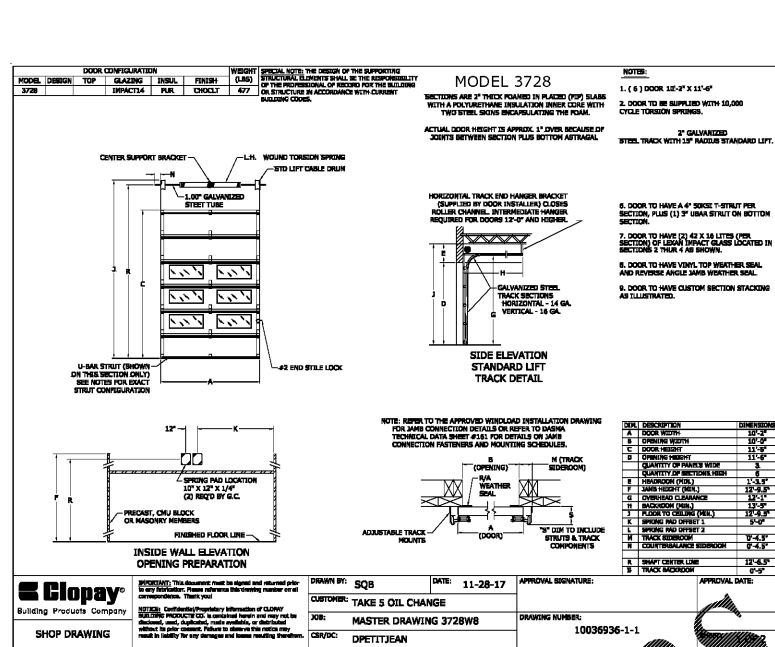
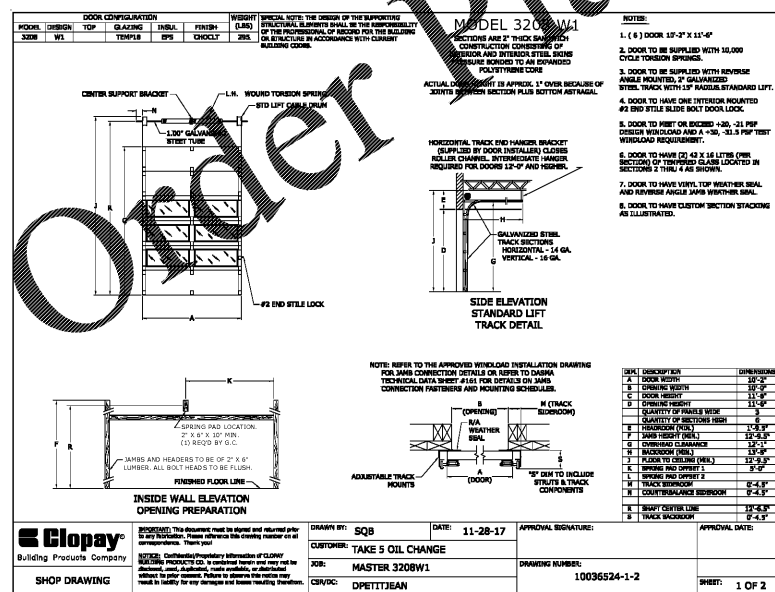


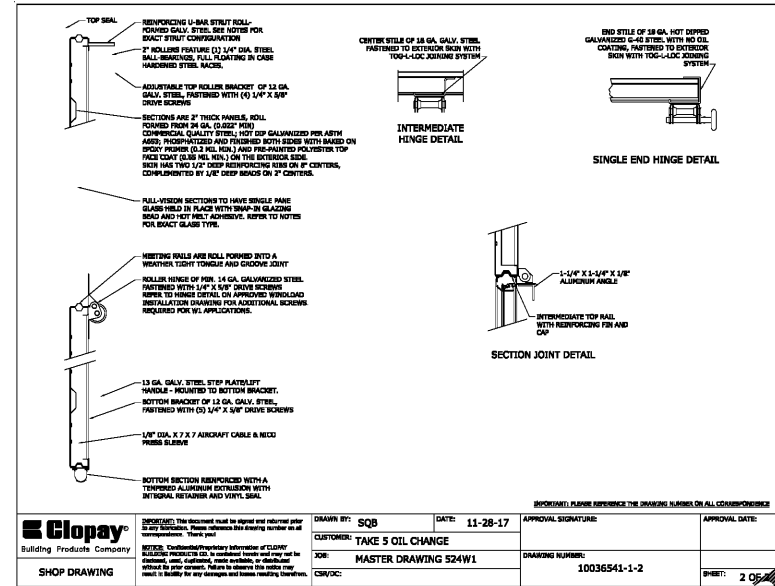
MODEL	524W1
DOOR CONFIGURATION	W1
GLAZING	TEMPER
INSULATION	CHOCKY
WEIGHT (LBS)	300



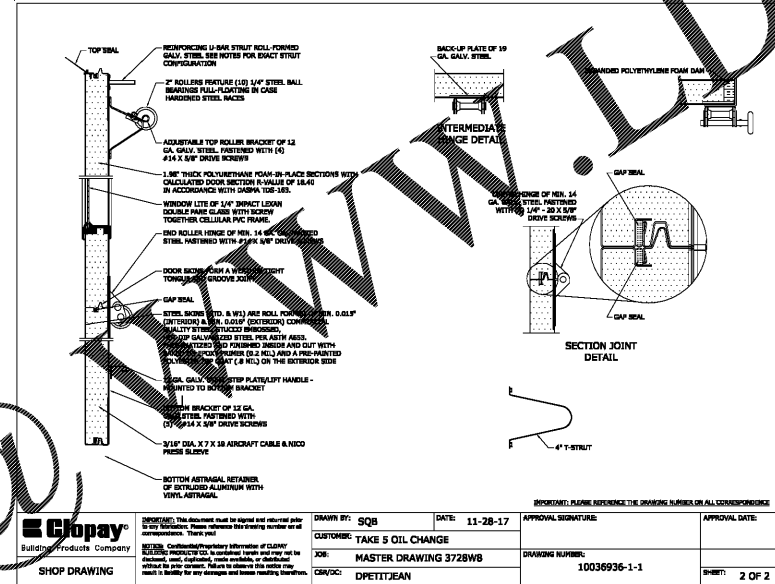
MODEL	3728
DOOR CONFIGURATION	W1
GLAZING	TEMPER
INSULATION	CHOCKY
WEIGHT (LBS)	477



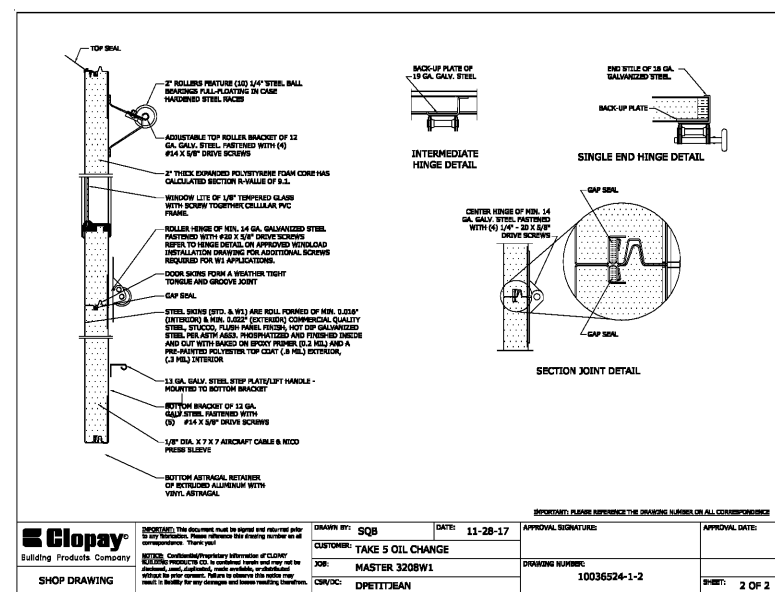
MODEL	320BW1
DOOR CONFIGURATION	W1
GLAZING	TEMPER
INSULATION	CHOCKY
WEIGHT (LBS)	300



MODEL	524W1
DOOR CONFIGURATION	W1
GLAZING	TEMPER
INSULATION	CHOCKY
WEIGHT (LBS)	300



MODEL	3728
DOOR CONFIGURATION	W1
GLAZING	TEMPER
INSULATION	CHOCKY
WEIGHT (LBS)	477



MODEL	320BW1
DOOR CONFIGURATION	W1
GLAZING	TEMPER
INSULATION	CHOCKY
WEIGHT (LBS)	300

DESIGNER OF RECORD TO SELECT SPECIFIC OVERHEAD DOOR MODEL BASED ON LOCAL WIND LOAD / CODE REQUIREMENTS.  
DELETE ALL OTHER OVERHEAD DOORS SHOWN ON THIS SHEET.

Model	Cost Per Door	Cost Per Sq Ft	ASCE 7-10 EXP B	ASCE 7-10 EXP C
+13.5-13.5 PSF W1	524	3208	0-121 MPH	0-108 MPH
+20-21 PSF W1	NOTE 1	NOTE 1	121-139 MPH	108-139 MPH
+30-36 PSF IMPACT W6	NOTE 1	NOTE 1	140-246 MPH	140-227 MPH

NOTE 1: COST OF DOORS SET BY VENDOR AND TAKE 5  
IBC 2003, IBC 2006, IBC 2009, Texas Department of Insurance\*\*  
Wind enforced areas

Model	Cost Per Door	Cost Per Sq Ft	ASCE 7-05 EXP B	ASCE 7-05 EXP C
+13.5-13.5 PSF W1	524	3208	0-83 MPH	0-83 MPH
+20-21 PSF W1	NOTE 1	NOTE 1	93-116 MPH	84-104 MPH
+30-36 PSF IMPACT W6	NOTE 1	NOTE 1	117-198 MPH	105-178 MPH

NOTE 1: COST OF DOORS SET BY VENDOR AND TAKE 5  
Wind Loading - Impact Glazing Requirements  
IBC 2012, 2015, FBC, SC BC, Miami Dade County  
ASCE 7-10: Over 140 mph or over 130 mph within 1 mile of coast  
IBC 2003, IBC 2006, IBC 2009, Texas Department of Insurance  
ASCE 7-05: Over 120 mph or over 110 mph within 1 mile of coast  
\*\*Pending respective product approvals

TAKE 5 OIL CHANGE  
11909 E. MLK JR BLVD  
SEFFNER, FL 33584

CHILDREY ROBINSON ASSOCIATES

1312 KENTWORTH AVENUE  
CHARLOTTE, NORTH CAROLINA 28204  
PHONE: 704.379.6666  
WWW.CHILDREYROBINSON.COM

STATE OF FLORIDA  
REGISTERED ARCHITECT  
67419

REV.	DESCRIPTION

06-24-2019  
OVERHEAD DOORS  
A-103