

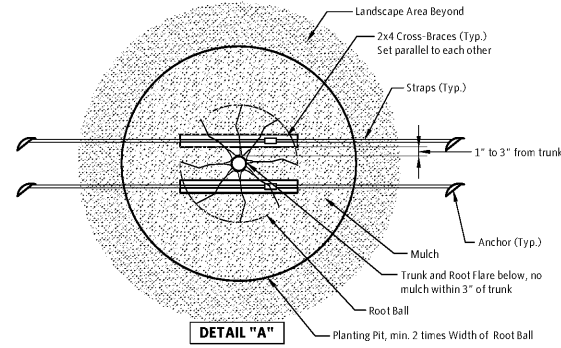
LANDSCAPE SPECIFICATIONS

- All plant material shall be Florida grade no. 1 or better per "Florida Grades and Standards for Nursery Plants 2015", latest revision, Florida Department of Agriculture, Tallahassee, FL.
- All permits necessary for installation/construction are to be provided by the landscape contractor unless otherwise specifically stated in the landscape plans or notes.
- Installation of landscape must be coordinated with other subcontractors; the landscape contractor will be responsible for locating underground utilities prior to excavation.
- The contractor shall notify the landscape architect if any conflicts arise between the proposed design and existing conditions on-site.
- The contractor is responsible for familiarizing himself with on-site conditions as part of the bidding process. The contractor shall notify the landscape architect prior to award of contract of any on-site conditions that would hinder the normal, healthy growth of plant species proposed on these plans.
- The landscape architect may be contacted for assistance in layout of plant material, if needed. All questions regarding plant placement must be resolved prior to commencement of installation.
- Carefully review the landscape material specifications. All materials must be as specified on the landscape plans. If materials or methods do not adhere to specifications, the landscape architect will reject them.
- The landscape architect will accept no substitutions of plant material/species without written approval. Contractor shall submit to the landscape architect proof of non-availability and a proposal for the use of equivalent material.
- Plant material quantities shown on these plans are supplied as an aid to the contractor for bidding purposes. Final quantity takeoffs are the responsibility of the contractor. Notify the landscape architect if any discrepancies exist prior to proceeding with any changes in material quantities.
- Plant specifications of height, clear trunk, spread and container size shown on the plans are minimum acceptable sizes. All installed material shall meet or exceed the given specifications. The contractor shall submit to the landscape architect proof of non-availability and a proposal for the use of equivalent material.
- The general contractor is responsible for rough grading the site to within 0.10 ft. of grades shown on these plans. The landscape contractor is responsible for finish grades in all landscape areas. All proposed contours shown on the landscape plans are to be graded to a maximum slope of 3H:1V.
- Landscape Contract shall have any applicable licenses or certifications required per state or municipal codes.
- Planting beds shall be treated with a US EPA approved pre-emergent herbicide prior to installation of plant material. Contractor shall follow manufacturer's specifications for application rates, etc.

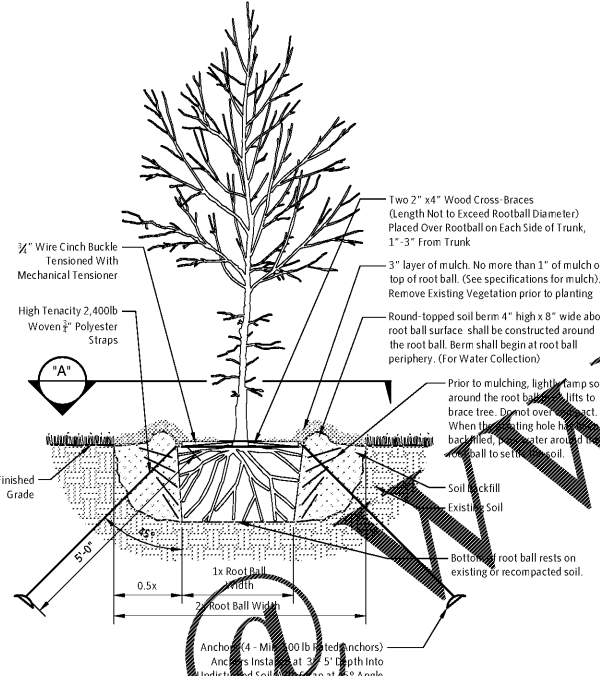
- Shrub beds shall be mulched with a 3" layer of mini pine bark mulch unless adjacent existing beds have a minimum of 1" layer of differing mulch material, in which case the existing mulch material shall be matched.
- Annual and perennial beds shall be mulched with a 3" layer of pine fines.
- Planting pits shall be amended and backfilled with a mixture of one part good quality peat or composted fines, and one part native soil or approved equal. All annual beds shall be filled to a depth of ten inches with an approved soil mix. Contractor shall submit samples for approval. Contractor shall also place an appropriate quantity of "agriform" slow release fertilizer tablets into each plant pit.
- The contractor is responsible for appropriate watering and maintenance of all plant material during the installation phase. Any dead or deficient plant material will be replaced prior to final acceptance by the owner.
- The contractor shall warrant all workmanship and materials per Hillsborough County contractual requirements.
- The contractor shall verify that the soil is free of excess clay, debris and trash and has a pH level suitable for optimal growing conditions prior to implementation of the proposed plan.
- All landscape bids shall provide unit price breakdowns for plants and supplemental materials.

21. All landscaped areas shall either be mulched or sodded in accordance with local municipal or jurisdictional regulations.

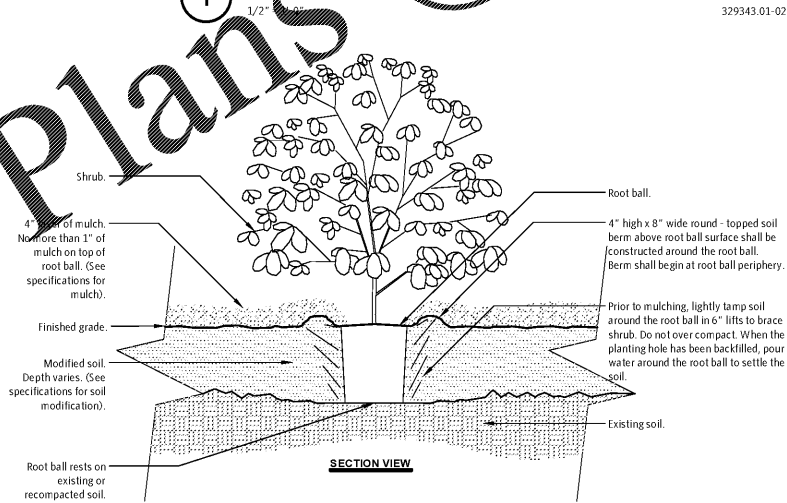
- After completion of planting, the contractor shall remove all rope "cross-ties" from the top of the rootball and cut the wirebasket away from the top of the rootball.
- Sod shall be planted as quickly as possible after delivery, but if there are delays, store the sod in a cool, shady place until ready to plant. (Sod life on pallets during summer is less than 48 hours.) The area to be planted shall be properly prepared (e.g., tilled and raked smooth) prior to sod delivery and shall be moistened at the time of laying sod. Sod pieces shall be fitted together as tightly as possible, but the sod should not be stretched to fit an area. If cracks are evident between pieces, they shall be filled with cut up pieces of sod. Lay the sod in a staggered brick pattern so that the seams are offset between sod pieces. Tamp or roll the sod to remove air pockets and ensure good soil contact. Make sure the roots have good contact with the underlying soil so that it does not dry out during establishment. Keep the grass moist for the first 7 days after planting with brief spritzes of water 2-3 times during the day.



- Notes:**
- Top of root ball shall be 0" to 1" above finished grade.
 - Remove plant containers prior to planting. If plants are not container grown, remove a minimum of the top 1/2 of burlap, fabric, or wire mesh. Cut and fold top 1/2 of wire basket away from top of root ball. Cut and remove all straps.
 - Allow no more than 1" of soil to cover the uppermost root on all trees. Set the top of root ball plumb to the horizon.
 - Backfill with loosened existing soil or as shown in the plans. Remove rocks, sticks, or other deleterious material greater than 1" in any direction prior to backfilling. Water and tamp to remove air pockets.

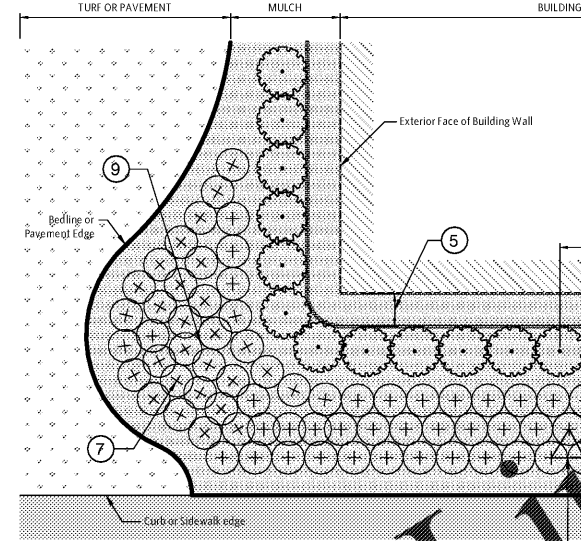


1 TREE PLANTING DETAIL (4-IN CALIPER AND UNDER)
1/2" = 1'-0"
329343.01-02

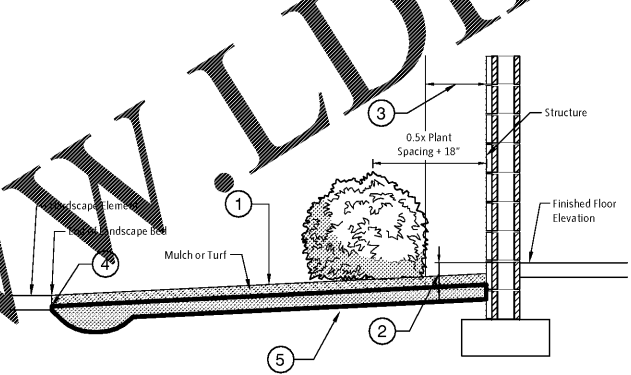


- Notes:**
- Shrubs shall be of quality prescribed in the root observations detail and specifications.
 - See specifications for further requirements related to this detail.

2 SHRUB - MODIFIED SOIL
3/4" = 1'-0"
FX-PL-FX-SHRB-03

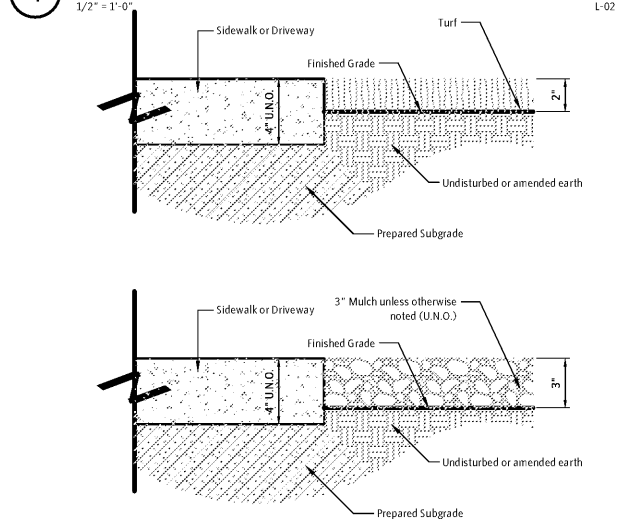


3 PLANT LAYOUT DETAIL
3/16" = 1'-0"
L-01



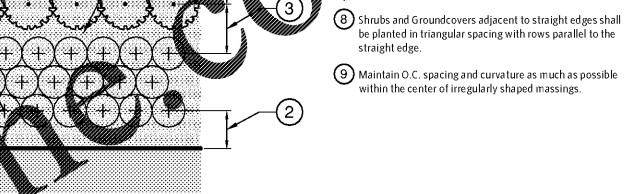
- Slope Bed or Planter Soil at 1/4" per foot (2%) from building to end of landscape bed.
- 4" minimum separation from Finished Grade to Finished Floor Elevation.
- Maintain an 18" minimum setback from building faces and 12" setback from freestanding wall faces. Increase as necessary to allow for species growth & maintenance access.
- Finished Grade: 3" below top of adjacent hardscape element for areas receiving mulch and 2" below top of adjacent hardscape element for areas receiving sod.
- Remove debris and base materials from landscape area to native soil. Backfill with Topsoil per specifications.

4 FOUNDATION LANDSCAPING DETAIL
1/2" = 1'-0"
L-02

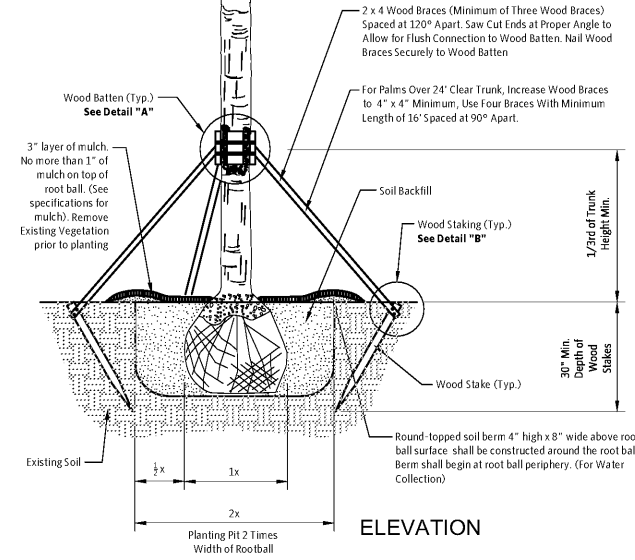
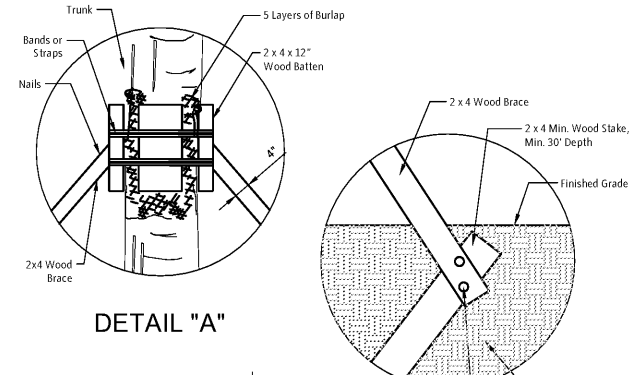


5 FINISHED GRADE AT SIDEWALK DETAIL
3/16" = 1'-0"
L-03

- "Center to Center Spacing" (O.C.) varies for different plant species. Space each variety of plant equally in planting areas unless otherwise noted.
- Distance between the edge of pavement and the centerline of the nearest plant row is 1 to 1.5 times the on center spacing of the nearest plant group.
- Distance between plant material types shall be the greater of the two plant spacing distances.
- Distance between the edge of building and the centerline of the nearest plant shall be 2' plus 0.5 times the on center spacing of the plant.
- Maintain an 18" minimum setback from building faces and 12" setback from freestanding wall faces. Increase as necessary to allow for species growth & maintenance access. (See Plant List)
- Plants and groundcover adjacent to curved edges shall be planted in rows parallel to the bedline.
- Shrubs and Groundcovers adjacent to straight edges shall be planted in triangular spacing with rows parallel to the straight edge.
- Maintain O.C. spacing and curvature as much as possible within the center of irregularly shaped massings.



6 PALM PLANTING DETAIL
1/2" = 1'-0"
329343.02-01



6 PALM PLANTING DETAIL
1/2" = 1'-0"
329343.02-01

Order Plans

dark moss

TAKE 5 SEFFNER

PROJECT: BEACON CIVIL ENGINEERING, LLC
LOCATION: SEFFNER, FLORIDA

PREPARED FOR: BEACON CIVIL ENGINEERING, LLC
ISSUE DATE: 2020-05-15
PHASE: PERMIT NOT FOR BID
SHEET TITLE: LANDSCAPE DETAILS
REVISION:

LA1.2