

ISSUED FOR PERMITTING

DESIGNED BY:	TS	DRAWN BY:	TS	ISSUE DATE:	12/07/19
CHECKED BY:	TS	APPROVED BY:	LB	JOB NO.:	19-099
NO.	BY	DATE	REVISION DESCRIPTION		
1	TS	03/07/20	PER HILLSBOROUGH COUNTY COMMENTS		
2	JL	03/07/20	PER FOOT COMMENTS		
3	CEJ	03/07/20	PER HILLSBOROUGH COUNTY COMMENTS		

BEFORE YOU DIG
CALL SUNSHINE STATE
ONE CALL OF FLORIDA
1-800-432-4770
FOR THE LOCATION OF
UNDERGROUND UTILITIES
AN APPROXIMATE WAY ONLY AND HAVE NOT BEEN INDEPENDENTLY
VERIFIED BY THE OWNER OR ITS REPRESENTATIVE. THE CONTRACTOR
BEFORE BEGINNING WORK SHALL BE RESPONSIBLE FOR THE EXISTING UTILITIES
FOR ANY AND ALL DAMAGES WHICH MIGHT BE OCCASIONED BY THE
CONTRACTOR'S FAILURE TO EXACTLY LOCATE AND PREPARE ANY AND
ALL UNDERGROUND UTILITIES.

3 WORKING DAYS
BUILDING ACCESS AND PROTECTION NOTES
1. THE CONTRACTOR SHALL MAINTAIN ACCESS FOR EMERGENCY VEHICLES AROUND AND TO ALL BUILDINGS UNDER CONSTRUCTION WITH A MINIMUM WIDTH OF 20 FT. THE ACCESS TO BUILDINGS WITH SPRINKLER OR STAIRWELL SYSTEMS SHALL BE WITHIN 40 FT OF THE FIRE DEPARTMENT CONNECTION ACCORDING TO NFPA 1141 3-1.
2. CONTRACTOR SHALL ENSURE POSITIVE DRAINAGE AWAY FROM BUILDING IN ALL AREAS AROUND BUILDING.

HILLSBOROUGH COUNTY NOTES
A. THE CONTRACTOR/ENGINEER OF RECORD MUST CONTACT THE HILLSBOROUGH COUNTY PUBLIC UTILITY DEPT. INSPECTION SECTION AND LINE MAINTENANCE TO SET UP THE PRE-CONSTRUCTION MEETING. CONTACT MATT CIOFALO @ 272-5977 EXT. 4334 FOR INSPECTIONS AND THE SOUTH/CENTRAL LINE MAINTENANCE UNIT AT 671-7604 OR THE NORTHWEST LINE MAINTENANCE UNIT AT 554-5010.
B. ALL ELEVATIONS REFERENCE THE NORTH AMERICAN VERTICAL DATUM OF 1988 (NAVD 88).
C. CONTRACTOR TO EXPOSE WATER MAIN AND FURNISH TAPPING SLEEVE AND VALVE FOR WATER METER TAP AND INSTALL 2" POLYETHYLENE (P.E.) WATER SERVICE LINE FROM MAIN TO METER. HILLSBOROUGH COUNTY PUBLIC UTILITIES WILL PERFORM THE TAPPING OPERATION.
D. CONTRACTOR TO COORDINATE WITH KEN WILLIAMS FOR SOUTH/CENTRAL @ 813-671-7604, OR SEAN YUHAS FOR NORTHWEST @ 813-554-5010 OF THE HILLSBOROUGH COUNTY PUBLIC UTILITIES DEPT. PRIOR TO THE SELECTION AND ORDERING OF THE WATER METER AND/OR BACKFLOW PREVENTION DEVICE ASSEMBLY.
E. THE MASTER METER ASSEMBLY WILL BE DIRECTLY ACCESSIBLE BY BOOM TRUCK OFF OF THE COUNTY R.O.W. OR BY AN INTERIOR ROAD THAT IS NOT BLOCKED BY A WALL, FENCE, OR GATE. THE ELEVATION OF THE CONCRETE SLAB WILL BE HIGHER THAN THE IMMEDIATE SURROUNDING AREA. DO NOT MULCH AREA AROUND SLAB. DO NOT PLANT ANY LANDSCAPE THAT WILL HINDER DIRECT ACCESS IN THE FUTURE TO THE METER ASSEMBLY.
F. CONTRACTOR MUST COORDINATE THE SHUTDOWN OF THE EXISTING POTABLE WATER, WASTEWATER FORCEMAIN, OR RECLAIMED WATER MAIN WITH HILLSBOROUGH COUNTY FIELD MAINTENANCE SERVICES. CONTACT THE NORTHWEST UNIT AT 813-554-5010 OR THE SOUTH/CENTRAL UNIT AT 813-671-7604.
G. ALL NON-METALLIC PIPE WILL BE INSTALLED WITH 2 PAIR, 10 GAUGE COPPER TRACER WIRE.
H. THE LOCATION OF ALL NEWLY INSTALLED FIRE HYDRANTS SHALL BE IDENTIFIED WITH A BLUE REFLECTIVE PAVEMENT MARKER INSTALLED ON THE ROADWAY, PERPENDICULAR TO THE FIRE HYDRANT. THE REFLECTIVE MARKER WILL BE LOCATED IN THE CENTER OF THE LANE CLOSEST TO THE HYDRANT.
I. THE ENGINEER OF RECORD AND/OR CONTRACTOR WILL BE RESPONSIBLE FOR THE FLOW TESTING AND COLOR CODING OF ALL NEWLY INSTALLED FIRE HYDRANTS IN THE EXISTING OR PROPOSED HILLSBOROUGH COUNTY RIGHT OF WAY AND UTILITY EASEMENTS THAT ARE TO BE DEDICATED TO HILLSBOROUGH COUNTY PRIOR TO THE FINAL INSPECTION OF THE PROJECT. THE ENGINEER OF RECORD AND/OR CONTRACTOR SHALL REFER TO NFPA STANDARD 291 FOR FLOW TESTING AND COLOR CODING METHODS AND PROCEDURES.

LAURIE S. BURCAW, PE #46064
BEACON CIVIL ENGINEERING
LAND DEVELOPMENT ENGINEERS
8345 GUNN HIGHWAY
TAMPA, FL 33626

TAKE-5
OIL
CHANGE
OF
SEFFNER

11909 E DR MARTIN LUTHER KING JR BLVD, SEFFNER, FL.
SHEET NAME: GRADING, DRAINAGE & UTILITY PLAN
SHEET NUMBER: C-5

UTILITY NOTES
1. REFER TO SHEET C-11 FOR UTILITY DETAILS.
2. REFER TO MEP PLANS FOR ALL UTILITY LEADS INTO BUILDING.
3. SANITARY SEWER PIPES SHALL HAVE A MINIMUM SLOPE OF 1.00%.
4. PRIOR TO STARTING CONSTRUCTION, CONTRACTOR SHALL FIELD VERIFY ALL EXISTING UTILITIES AND THEIR LOCATIONS AND ELEVATIONS. IF ANY DISCREPANCIES OCCUR, THE CONTRACTOR SHALL ALERT ENGINEER IMMEDIATELY.
5. ALL PUBLIC UTILITIES INSPECTIONS SHALL BE SCHEDULED BY THE CONTRACTOR AT LEAST 72 HOURS PRIOR TO ANY CONSTRUCTION ACTIVITY.
6. ALL DEMOLITION AND CONSTRUCTION WORK PERFORMED SHALL BE DONE IN STRICT ACCORDANCE WITH GOVERNING JURISDICTIONAL CODES.
7. ALL UTILITY CONDUIT MATERIAL FOR TELEPHONE, CABLE, AND ELECTRIC SHALL BE INSTALLED PER UTILITY PROVIDER SPECIFICATIONS BY THE CONTRACTOR.
8. CONTRACTOR SHALL BUILD CONCRETE TRANSFORMER PAD AND INSTALL SCHEDULE 80 PVC CONDUIT AND PULL STRING WITH SWEEPING BENDS, IF APPLICABLE BY ELECTRIC COMPANY.
9. ALL SANITARY GRADYPIES, SERVICE LATERALS, AND FITTINGS SHALL BE MATERIALS APPROVED BY THE GOVERNING JURISDICTION.
10. ALL NON-METALLIC PIPE WILL BE INSTALLED WITH 2 PAIR, 10 GAUGE, COPPER TRACER WIRE.
11. CONTRACTOR SHALL COORDINATE WITH GOVERNING JURISDICTION(S) FOR ANY PROPOSED WET TAPS AND R.O.W. CONNECTIONS.
12. ALL UTILITIES SHALL MAINTAIN AT LEAST 3 FEET OF COVER FROM TOP OF PIPE TO SURFACE ELEVATION. CONTRACTOR SHALL DEFLECT WATER AND FORCE MAINS AS NECESSARY TO ACHIEVE MINIMUM GOVERNING JURISDICTION(S) SEPARATION REQUIREMENTS.
13. CONTRACTOR MUST COORDINATE THE SHUTDOWN OF THE EXISTING POTABLE WATER, WASTEWATER FORCEMAIN, OR RECLAIMED WATER MAIN WITH GOVERNING JURISDICTION(S), IF NECESSARY.
14. OVER STORY TREES SHALL NOT BE LOCATED WITHIN 12 FT OF ANY PUBLIC UNDERGROUND OR OVERHEAD UTILITY LINE.
15. CONTRACTOR SHALL VERIFY LOOP DETECTORS TO AVOID UTILITY CONFLICTS PRIOR TO CONSTRUCTION, IF APPLICABLE.
16. CONTRACTOR SHALL PROTECT ALL UTILITIES OUTSIDE THE LIMITS OF CONSTRUCTION UNLESS OTHERWISE NOTED IN THE CONSTRUCTION GOVERNING JURISDICTIONAL STANDARDS.
17. ALL DISTURBED AREAS WITHIN THE WALL CURB AND GUTTER/ROAD PAVEMENT SHALL BE RESTORED TO ITS ORIGINAL OR BETTER CONDITIONS.
18. THE SANITARY SEWER SYSTEM AND ITS PROPERTY IS PRIVATELY OWNED AND MAINTAINED WITHIN PROPERTY BOUNDARIES. THE LOCATION OF ALL NEWLY INSTALLED FIRE HYDRANTS SHALL BE IDENTIFIED WITH A BLUE REFLECTIVE PAVEMENT MARKER INSTALLED ON THE ROADWAY, PERPENDICULAR TO THE FIRE HYDRANT. THE REFLECTIVE MARKER WILL BE LOCATED IN THE CENTER OF THE LANE CLOSEST TO THE HYDRANT, IF APPLICABLE.
19. IF APPLICABLE, THE CONTRACTOR WILL BE RESPONSIBLE FOR THE FLOW TESTING AND COLOR CODING OF ALL NEWLY INSTALLED FIRE HYDRANTS IN THE GOVERNING JURISDICTION(S) RIGHT OF WAY AND UTILITY EASEMENTS THAT ARE TO BE DEDICATED TO GOVERNING JURISDICTION(S) PRIOR TO THE FINAL INSPECTION OF THE PROJECT. THE CONTRACTOR SHALL REFER TO NFPA STANDARD 291 FOR FLOW TESTING AND COLOR CODING METHODS AND PROCEDURES.
20. ALL PROPOSED WATER SUPPLY AND FIRE HYDRANTS SHALL COMPLY WITH CHAPTER 18.3.
21. CONTRACTOR SHALL NOTIFY ENGINEER OF RECORD (E.O.R.) 72 HOURS IN ADVANCE OF ALL INSPECTIONS THAT REQUIRE THE E.O.R. OR E.O.R. REPRESENTATIVE'S PRESENCE.
22. CONTRACTOR SHALL DEFLECT ALL PROPOSED WATER MAINS AND FORCE MAINS TO ACHIEVE 18" MIN. VERTICAL CLEARANCE FROM ALL EXISTING AND PROPOSED UTILITIES.
23. CONTRACTOR SHALL ADJUST TOP OF ALL CLEANOUTS, VALVES, AND STRUCTURE RIMS TO BE FLUSH WITH FINAL GRADE.
24. ALL TRENCHING AND BACKFILL OPERATIONS SHALL COMPLY WITH GOVERNING JURISDICTIONAL STANDARDS. SEE SHEET C-8 & C-11 FOR PIPE TRENCHING DETAILS.
25. SEE SHEET C-6 FOR HYDRANT LOCATION MAP.
26. LIFT STATION EMERGENCY CONTACT SIGN MUST BE DISPLAYED. CONTACT: KEITH MOHAMMED AT (832) 814-9946.
27. LIFT STATION EMERGENCY CONTACT SIGN MUST BE DISPLAYED. CONTACT: KEITH MOHAMMED AT (832) 814-9946.

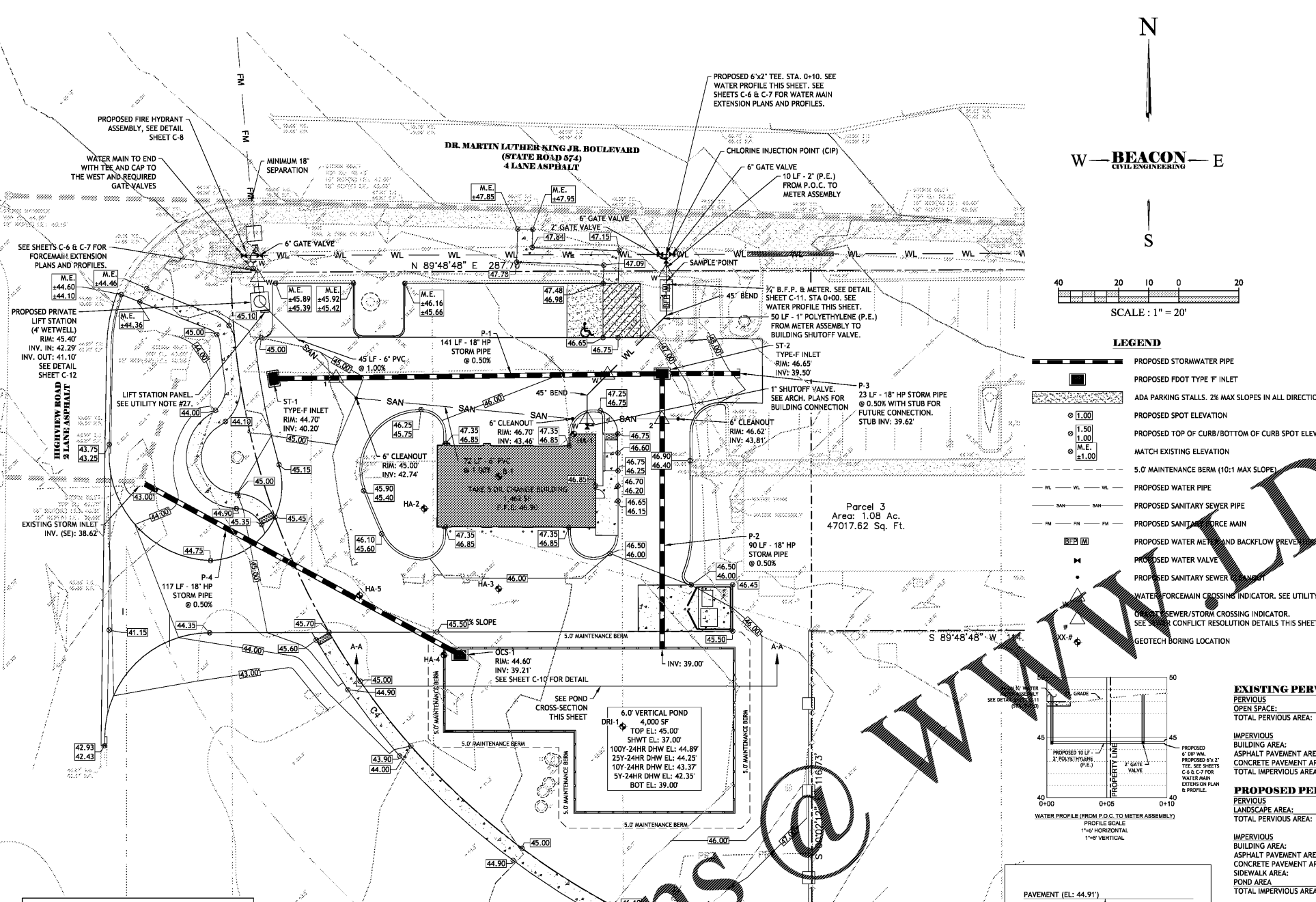
EXISTING PERVIOUS/IMPERVIOUS
PERVIOUS: 20,669 SF / 0.47 AC / 44%
OPEN SPACE: 20,669 SF / 0.47 AC / 44%
TOTAL PERVIOUS AREA: 20,669 SF / 0.47 AC / 44%
IMPERVIOUS: 8,393 SF / 0.19 AC / 18%
BUILDING AREA: 16,273 SF / 0.37 AC / 34%
ASPHALT PAVEMENT AREA: 1,683 SF / 0.04 AC / 2%
CONCRETE PAVEMENT AREA: 26,349 SF / 0.60 AC / 56%
TOTAL IMPERVIOUS AREA: 26,349 SF / 0.60 AC / 56%

PROPOSED PERVIOUS/IMPERVIOUS
PERVIOUS: 15,248 SF / 0.37 AC / 35%
LANDSCAPE AREA: 15,248 SF / 0.37 AC / 35%
TOTAL PERVIOUS AREA: 15,248 SF / 0.37 AC / 35%
IMPERVIOUS: 5,552 SF / 0.13 AC / 12%
BUILDING AREA: 19,665 SF / 0.45 AC / 42%
ASPHALT PAVEMENT AREA: 484 SF / 0.01 AC / 1%
CONCRETE PAVEMENT AREA: 1,069 SF / 0.02 AC / 2%
SIDEWALK AREA: 4,000 SF / 0.09 AC / 9%
POND AREA: 30,770 SF / 0.71 AC / 65%
TOTAL IMPERVIOUS AREA: 30,770 SF / 0.71 AC / 65%

UTILITY CONTACTS
POTABLE WATER
HILLSBOROUGH COUNTY WATER DEPARTMENT
925 E. TWIGGS STREET, TAMPA, FL 33602
EMAIL: PUBLICUTILITIES@HCF.LGOV.NET
PHONE: (813) 272-6680
WASTE WATER
HILLSBOROUGH COUNTY WASTE WATER DEPARTMENT
925 E. TWIGGS STREET, TAMPA, FL 33602
EMAIL: PUBLICUTILITIES@HCF.LGOV.NET
PHONE: (813) 272-6680

LEGEND
PROPOSED STORM WATER PIPE
PROPOSED FOOT TYPE 'F' INLET
ADA PARKING STALLS, 2% MAX SLOPES IN ALL DIRECTIONS
PROPOSED SPOT ELEVATION
PROPOSED TOP OF CURB/BOTTOM OF CURB SPOT ELEVATION
MATCH EXISTING ELEVATION
5.0' MAINTENANCE BERM (10:1 MAX SLOPE)
PROPOSED WATER PIPE
PROPOSED SANITARY SEWER PIPE
PROPOSED SANITARY FORCE MAIN
PROPOSED WATER METER AND BACKFLOW PREVENTION DEVICE
PROPOSED WATER VALVE
PROPOSED SANITARY SEWER SHUT-OFF
WATER-FORCEMAIN CROSSING INDICATOR. SEE UTILITY NOTE #23
UTILITY SEWER/STORM CROSSING INDICATOR. SEE SHEET C-6 FOR CONFLICT RESOLUTION DETAILS THIS SHEET.
GEOTECH BORING LOCATION

SCALE: 1" = 20'



FEMA FLOODZONE DATA
THE SUBJECT PROPERTY LIES IN FLOOD ZONE 'X' PER FEMA FIRM PANEL NUMBER '12057C0385H', DATED 08/28/2008

VERTICAL DATUM
ELEVATIONS SHOWN HEREIN ARE BASED ON THE (NAVD) 88 AND SAID ELEVATIONS ARE BASED ON BENCHMARKS RESEARCHED BY THE SURVEYOR

