



description	
by	
date	
mark	
revisions	

date	designed	drawn	checked
11/18/20	act	act	act

date	designed	drawn	checked
11/18/20	act	act	act

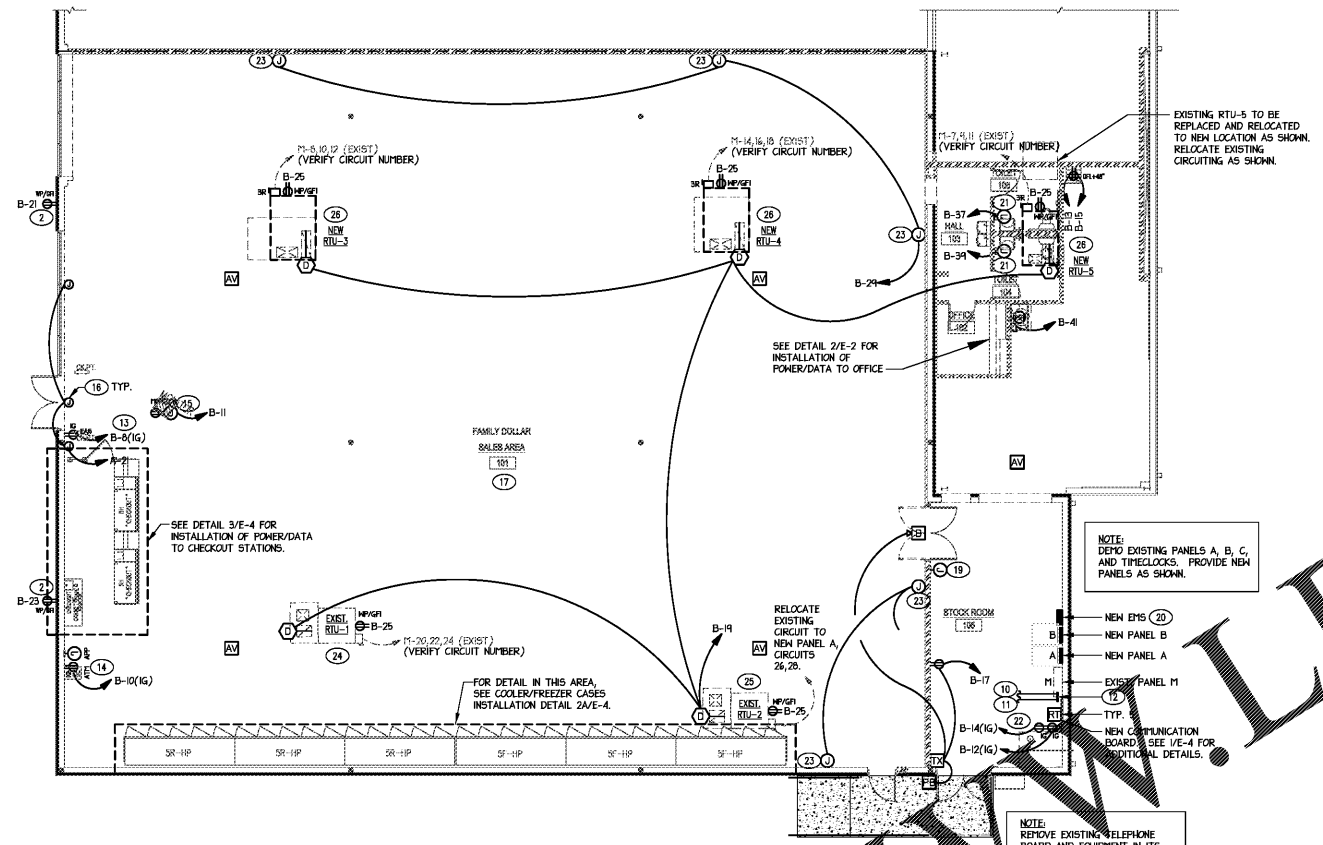


project	
drawing	

sheet	
-------	--

FAMILY DOLLAR
 FAMILY DOLLAR STORE, PDS #791567
 501 TENNESSEE AVE NORTH - PARKING, TN 38060
 ELECTRICAL UPFIT POWER PLAN AND DETAILS

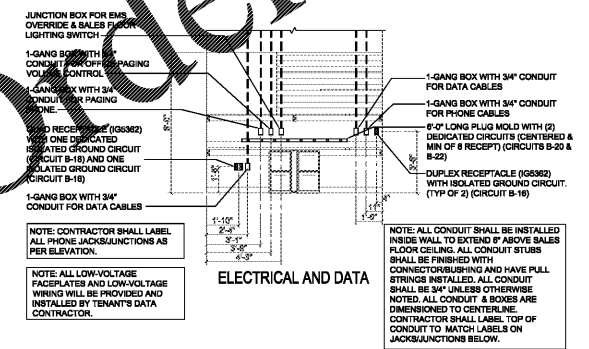
sheet	
-------	--



1 ELECTRICAL POWER PLAN
 1/8"=1'-0"

TAGGED NOTES (POWER PLAN)

- 1 NOT USED.
- 2 PROVIDE NEW DEDICATED 120V, 20A, GFI, WEATHERPROOF EXTERIOR RECEPTACLE AND CIRCUITING. PROVIDE WITH "N-USE" COVERS. RECEPTACLE SHALL BE RECESSED FLUSH IN WALL WHERE POSSIBLE. RUN CONDUIT CONCEALED IN WALL WHERE POSSIBLE. IF RECEPTACLE AND/OR CONDUIT MUST BE SURFACE MOUNTED (INTERIOR OR EXTERIOR) THEN COORDINATE FINAL RECEPTACLE LOCATION AND CONDUIT ROUTING WITH FAMILY DOLLAR CONSTRUCTION PROJECT MANAGER PRIOR TO BEGINNING ELECTRICAL ROUGH-IN.
- 3 NOT USED.
- 4 NOT USED.
- 5 NOT USED.
- 6 NOT USED.
- 7 NOT USED.
- 8 NOT USED.
- 9 EXTEND EXISTING TELEPHONE CONDUIT / TELEPHONE SERVICE OVERHEAD TO NEW COMMUNICATION BOARD LOCATION.
- 10 EXTEND EXISTING DATA CONDUIT / DATA SERVICE OVERHEAD TO NEW COMMUNICATION BOARD LOCATION.
- 11 TERMINATE ENDS OF TELEPHONE AND DATA CONDUITS OVERHEAD WITHIN 6" TO THE LEFT OF COMMUNICATION BOARD. DO NOT INSTALL CONDUIT EXPOSED ON FACE OF EXTERIOR WALL. SEE DETAIL 1/E-4 FOR ADDITIONAL DETAILS.
- 12



ELECTRICAL AND DATA

NOTE: CONTRACTOR SHALL LABEL ALL PHONE JACKS/JUNCTIONS AS PER ELEVATION.

NOTE: ALL CONDUIT SHALL BE INSTALLED INSIDE WALL TO EXTEND IF ABOVE SALES FLOOR CEILING. ALL CONDUIT STUBS SHALL BE FINISHED WITH CONNECTOR/WRAPPING AND HAVE PULL STRINGS INSTALLED. ALL CONDUIT SHALL BE 3/4" UNLESS OTHERWISE NOTED. ALL CONDUIT & BOXES ARE DIMENSIONED TO CENTERLINE. CONTRACTOR SHALL LABEL TOP OF CONDUIT TO MATCH LABELS ON JACKS/JUNCTIONS BELOW.

2 OFFICE ELEVATION

- 13 PROVIDE DEDICATED ISOLATED GROUND CIRCUIT TO FLUSH MOUNTED IG RECEPTACLE IN WALL 6" BELOW CEILING FOR EAS POWER SUPPLY. RECEPTACLE SHALL BE MOUNTED DIRECTLY ABOVE DOOR PULLION CLOSEST TO CHECKOUT STATIONS. IG RECEPTACLE SHALL BE "ORANGE" WITH WHITE COVER PLATE. CONFIRM SITE TO MOUNT RECEPTACLE WITH FD SITE SPECIFIC FIXTURE PLAN PRIOR TO BEGINNING CONSTRUCTION. EAS SHALL BE FURNISHED AND INSTALLED BY EAS VENDOR.
- 14 PROVIDE DEDICATED ISOLATED GROUND CIRCUIT TO FLUSH MOUNTED IG RECEPTACLE IN WALL 18" AFF. FOR APPLICATION STATION AND ATM. IN STORES WHERE APPLICATION STATION AND ATM ARE GREATER THAN 4' APART, IG RECEPTACLES SHALL BE PROVIDED FOR EACH. IG RECEPTACLES SHALL BE "ORANGE" WITH WHITE COVER PLATE. PROVIDE SINGLE GANG JUNCTION BOX MOUNTED NEXT TO APP STATION RECEPTACLE FOR DATA CONNECTION. CONTRACTOR SHALL MOUNT JUNCTION BOX IN WALL AT 18" AFF WITH 3/4" CONDUIT WITH PULL STRING UP IN WALL TO 12" ABOVE CEILING. DATA CABLEING SHALL BE PROVIDED BY FD LOW VOLTAGE VENDOR. CONFIRM RECEPTACLE LOCATION(S) WITH FD SITE SPECIFIC FIXTURE PLAN PRIOR TO BEGINNING CONSTRUCTION.
- 15 PROVIDE CIRCUIT TO FLUSH MOUNTED RECEPTACLE IN CEILING FOR SECURITY MONITOR. CONFIRM RECEPTACLE LOCATION WITH FD SITE SPECIFIC FIXTURE PLAN PRIOR TO BEGINNING CONSTRUCTION.
- 16 FURNISH AND INSTALL CONDUIT AND WIRING FOR EXTERIOR BUILDING SIGNS. CIRCUIT SHALL BE TERMINATED AT A JUNCTION BOX(ES) LOCATED ABOVE CEILING. BUILDING SIGN CIRCUIT SHALL BE CIRCUITED VIA EDS. COORDINATE ACTUAL NUMBER OF BUILDING MOUNTED SIGNS WITH ARCHITECTURAL ELEVATIONS AND FDS PROJECT HANGER FROM TO BEGINNING CONSTRUCTION. COORDINATE REQUIRED JUNCTION BOX QUANTITIES AND LOCATION WITH ARCHITECTURAL ELEVATIONS AND SIGN SUPPLIER PRIOR TO ELECTRICAL ROUGH-IN.
- 17 MC CABLE IS ALLOWED AS BUILDING STANDARD WHERE LOCAL CODE JURISDICTION WILL ALLOW. ALL MC CABLE SHALL BE RUN OVERHEAD, AND IN A NEAT AND ORGANIZED FASHION. WHERE CODE DOES NOT ALLOW MC CABLE, EMT SHALL BE USED. ALL EXPOSED CABLE AND CONDUIT SHALL BE RUN TIGHT TO CEILING CONSTRUCTION AND CONCEALED FROM VIEW WHEREVER POSSIBLE.
- 18 EXISTING POWER CONTROLS FOR AUTOMATIC SLIDING DOORS AND SECURITY BARS TO REMAIN.
- 19 PROVIDE SINGLE GANG JUNCTION BOX MOUNTED NEXT TO RECEIVING DOOR FOR PAGING PHONE. CONTRACTOR SHALL MOUNT JUNCTION BOX IN WALL AT 18" AFF WITH 3/4" CONDUIT WITH PULL STRING UP IN WALL TO 12" ABOVE CEILING. PAGING SYSTEM SHALL VENDOR SUPPLIED AND VENDOR INSTALLED.
- 20 NEW ENERGY MANAGEMENT SYSTEM (EMS). EMS SHALL BE FURNISHED BY FAMILY DOLLAR AND INSTALLED BY CONTRACTOR. SEE EP1 SHEETS FOR INSTALLATION DETAILS.
- 21 PROVIDE DEDICATED CIRCUIT FOR HAND DRYER. CIRCUIT SHALL BE TERMINATED TO JUNCTION BOX IN WALL. CONFIRM MOUNTING HEIGHT AND LOCATION WITH ARCHITECTURAL ENLARGED RESTROOM PLAN. CONTRACTOR SHALL MAKE FINAL ELECTRICAL CONNECTIONS TO HAND DRYER.
- 22 PROVIDE (2) TWO DEDICATED ISOLATED GROUND RECEPTACLES WITH ISOLATED GROUNDING CONDUCTOR BACK TO SERVICE GROUND. RECEPTACLES SHALL BE SURFACE MOUNTED AT COMMUNICATION BOARD DETAIL 1/E-4 FOR MOUNTING LOCATIONS AND INSTRUCTIONS ON USING STENCIL FOR LOCATING RECEPTACLES. RECEPTACLES SHALL BE "ORANGE" WITH WHITE COVER PLATES.
- 23 MOUNT JUNCTION BOX ON FLOOR LEVEL AND MAKE MC CONNECTION TO DUPLEX RECEPTACLE INSTALLED IN FIXTURE KICK PLATE.
- 24 EXISTING PACKAGED ROOFTOP UNIT WITH GAS HEAT TO REMAIN. VERIFY EXISTING CIRCUIT NUMBER AND UPDATE PANEL DIRECTORY ACCORDINGLY. PROVIDE NEW ROOFTOP SERVICE RECEPTACLE AND NEW CIRCUITING. PROVIDE NEW DUCT SMOKE DETECTOR, NEW AUDIO VISUAL DEVICE AND NEW REPUTE TEST STATION. REFER TO 4/E-4 FOR ADDITIONAL DETAILS.
- 25 EXISTING PACKAGED ROOFTOP UNIT WITH GAS HEAT TO REMAIN. EXISTING CIRCUIT SHALL BE RELOCATED AND RETERMINATED IN NEW PANEL A. PROVIDE NEW ROOFTOP SERVICE RECEPTACLE AND NEW CIRCUITING. PROVIDE NEW DUCT SMOKE DETECTOR, NEW AUDIO VISUAL DEVICE AND NEW REPUTE TEST STATION. REFER TO 4/E-4 FOR ADDITIONAL DETAILS.
- 26 EXISTING PACKAGED ROOFTOP UNIT WITH GAS HEAT TO BE REPLACED WITH NEW PACKAGED ROOFTOP UNIT WITH GAS HEAT. MCA OF NEW UNIT IS LESS THAN MCA OF EXISTING UNIT. REPLACE EXISTING CIRCUIT BREAKER IN PANEL WITH NEW CIRCUIT BREAKER AS SHOWN IN PANEL SCHEDULE. EXISTING CIRCUITING SHALL BE RELOCATED TO NEW UNIT DISCONNECT SWITCH AS REQUIRED. VERIFY EXISTING CIRCUIT NUMBER AND UPDATE PANEL DIRECTORY ACCORDINGLY. EXISTING CIRCUITING SHALL BE REUSED IF EXISTING CONDUCTORS ARE SIZED TO HANDLE MCA OF NEW UNIT. CONTRACTOR SHALL FIELD VERIFY CONDUCTOR SIZE AND REPLACE WITH NEW CONDUCTORS IF UNDERSIZED. PROVIDE NEW ROOFTOP SERVICE RECEPTACLE AND NEW CIRCUITING. PROVIDE NEW DUCT SMOKE DETECTOR, NEW AUDIO VISUAL DEVICE AND NEW REPUTE TEST STATION. REFER TO 4/E-4 FOR ADDITIONAL DETAILS.

ELECTRICAL POWER SYMBOL LEGEND

A-1	ARROWHEAD INDICATES HOMERUN TO PANEL NOTED.
JB	JUNCTION BOX HALL OR CEILING MOUNTED.
MS	SINGLE POLE, 120V, 20A MOTOR RATED TOGGLE SWITCH.
DP	DUPLEX RECEPTACLE, 20 AMP, 120 VOLT, 18" A.F.F. TO CENTER, UNLESS OTHERWISE SPECIFIED.
GFI	"GFI" INDICATES GROUND FAULT CIRCUIT INTERRUPTER TYPE.
WP	"WP" INDICATES WEATHERPROOF WITH "N-USE" COVER.
IG	"IG" INDICATES ISOLATED GROUND RECEPTACLE WITH ISOLATED GROUND WIRE AND DEDICATED NEUTRAL. HUBBELL #HG-5262.
QD	QUADRUPLUX RECEPTACLE, AS ABOVE, 18" A.F.F. TO CENTER, UNLESS OTHERWISE SPECIFIED.
WB	WEATHERPROOF PUSH BUTTON FOR DOORBELL SYSTEM MOUNTED 46" A.F.F. TO CENTER. EDWARDS MODEL #640-N WITH EDWARDS MODEL #47-1 MOUNTING PLATE. SEE HIRING DIAGRAM 5/E-4 FOR DETAILS.
DB	DOOR CHIME FOR DOORBELL SYSTEM MOUNTED ABOVE CEILING. CONNECT TO DOOR CHIME TRANSFORMER. EDWARDS MODEL #58B-GS (24VAC, 12VA). SEE HIRING DIAGRAM 5/E-4 FOR DETAILS.
DT	LOW VOLTAGE STEP DOWN TRANSFORMER FOR DOORBELL SYSTEM. EDWARDS MODEL #52 PROVIDE WITH EDWARDS MODEL #58 TRANSFORMER MOUNTING PLATE. MOUNT 9'-0" AFF. IN SUPPORT ROOM. SEE HIRING DIAGRAM 5/E-4 FOR DETAILS.
TO	TELEPHONE OUTLET, 18" A.F.F. TO CENTER OR AT HEIGHT INDICATED ON PLANS. PROVIDE SINGLE GANG DATA BOX WITH 3/4" CONDUIT WITH PULL STRING TO 6" ABOVE LAY-IN CEILING OR TO 12" A.F.F. IN AREAS WITH NO CEILING. CAT5E CABLEING AND COVERPLATE SHALL BE INSTALLED BY FDS LOW VOLTAGE VENDOR.
DO	DATA OUTLET, 18" A.F.F. TO CENTER OR AT HEIGHT INDICATED ON PLANS. PROVIDE SINGLE GANG DATA BOX WITH 3/4" CONDUIT WITH PULL STRING TO 6" ABOVE LAY-IN CEILING OR TO 12" A.F.F. IN AREAS WITH NO CEILING. CAT5E CABLEING AND COVERPLATE SHALL BE INSTALLED BY FDS LOW VOLTAGE VENDOR.
GS	GENERAL DUTY FUSIBLE/NON-FUSIBLE DISCONNECT SWITCH, NUMBERS INDICATE FRAME SIZE, NUMBER OF POLES AND FUSING. PROVIDE NEMA 1 ENCLOSURE INSIDE. PROVIDE NEMA 3 ENCLOSURE FOR ALL SWITCHES LOCATED OUTSIDE.
FP	"FP" INDICATES FUSE PER EQUIPMENT NAMEPLATE.
NP	"NP" INDICATES NON-FUSED.
EP	ELECTRICAL PANEL. SEE SCHEDULE FOR DETAILS.
EM	ELECTRIC UTILITY METER LOCATION.
MH	WATER HEATER. PROVIDE DISCONNECTING MEANS AS REQUIRED.
EL	EXTERIOR LED LIGHT FIXTURE.
SD	DUCT MOUNTED SMOKE DETECTOR, CONNECT TO 120V CIRCUIT INDICATED. COORDINATE INSTALLATION RESPONSIBILITIES WITH ALL CONTRACTORS. SEE HIRING DIAGRAM 4/E-4 FOR DETAILS.
AV	DUCT SMOKE DETECTOR AUDIO/VISUAL DEVICE. MOUNT IN CENTER OF CEILING GRID TILE IN SALES AREA. MOUNT TO BOTTOM OF STRUCTURE IN STOCK ROOM. COORDINATE INSTALLATION RESPONSIBILITIES WITH ALL CONTRACTORS. SEE HIRING DIAGRAM 4/E-4 FOR DETAILS. FIELD COORDINATE FINAL LOCATION WITH LOCAL FIRE MARSHALL AND BUILDING INSPECTOR PRIOR TO ROUGH-IN.
RT	DUCT SMOKE DETECTOR REPUTE TEST STATION MOUNTED AT COMMUNICATION BOARD. SEE DETAIL 1/E-4 FOR EXACT LOCATION. COORDINATE INSTALLATION RESPONSIBILITIES WITH ALL CONTRACTORS. SEE HIRING DIAGRAM 4/E-4 FOR DETAILS.

POWER DEMOLITION NOTES:
 REMOVE ALL EXISTING RECEPTACLES AND POWER NOT SHOWN AS EXISTING TO REMAIN OR NOTED AS EXISTING TO REMAIN. REMOVE ALL ASSOCIATED CONDUIT, WIRING AND DEVICES. FIELD COORDINATE FINAL SCOPE OF DEMOLITION WORK WITH GC PRIOR TO BEGINNING CONSTRUCTION.