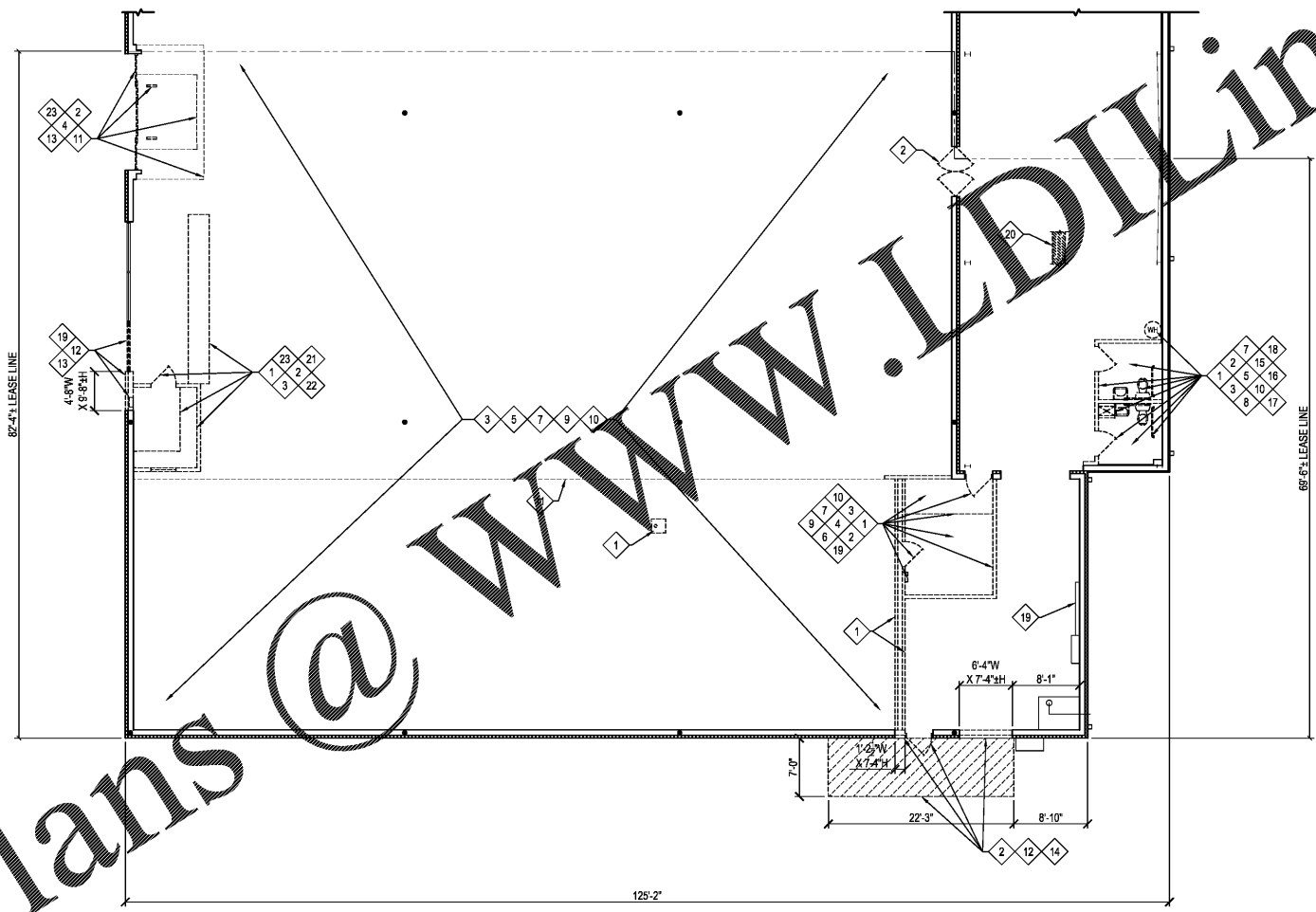


Order Plans @ www.LDILine.com

- | DEMOLITION NOTES | |
|------------------|--|
| 1 | REMOVE PARTITION COMPLETE. |
| 2 | REMOVE DOOR AND FRAME COMPLETE. |
| 3 | REMOVE EXISTING WALL FIXTURES AND FINISHES COMPLETE. |
| 4 | FLOORING CONTRACTOR (TENANT HIRED) SHALL REMOVE EXISTING CARPET COMPLETE. GC SHALL NOT INCLUDE IN BID. |
| 5 | FLOORING CONTRACTOR (TENANT HIRED) SHALL REMOVE EXISTING VCT FLOORING COMPLETE. GC SHALL NOT INCLUDE IN BID. |
| 6 | FLOORING CONTRACTOR (TENANT HIRED) SHALL REMOVE EXISTING WOOD TILE COMPLETE. GC SHALL NOT INCLUDE IN BID. |
| 7 | REMOVE EXISTING BASE COMPLETE. |
| 8 | REMOVE EXISTING GWB CEILING COMPLETE. |
| 9 | REMOVE EXISTING ACT AND GRID COMPLETE. |
| 10 | REMOVE EXISTING LIGHT FIXTURES COMPLETE. |
| 11 | REMOVE EXISTING SOFFIT COMPLETE. |
| 12 | REMOVE PORTION OF EXISTING BRICK VENEER WALL TO EXISTING SLAB AS INDICATED FOR INSTALLATION OF DOOR IN NEW WORK. REFER TO STRUCTURAL DWGS. |
| 13 | REMOVE EXIST STOREFRONT FRAMING AND GLAZING COMPLETE. |
| 14 | REMOVE PORTION OF EXISTING CONCRETE/ASPHALT COMPLETE FOR INSTALLATION OF RAMP AND LANDING IN NEW WORK. REFER TO STRUCTURAL DWGS. |
| 15 | REMOVE EXISTING PLUMBING FIXTURES AND ACCESSORIES COMPLETE. FOR REMOVAL OF PLUMBING FIXTURES SEE PLUMBING SHEETS. |
| 16 | REMOVE EXISTING MOP SINK COMPLETE. FOR REMOVAL OF PLUMBING FIXTURES SEE PLUMBING SHEETS. |
| 17 | REMOVE EXISTING WATER HEATER COMPLETE. FOR REMOVAL OF PLUMBING FIXTURES SEE PLUMBING SHEETS. |
| 18 | REMOVE, CAP, OR FILL EXISTING DRAIN COMPLETE. FOR MODIFICATION OF EXISTING PLUMBING SEE PLUMBING SHEETS. |
| 19 | FOR REMOVAL AND/OR RELOCATION OF EXISTING ELECTRICAL PANELS AND TRANSFORMER SEE ELECTRICAL SHEETS. |
| 20 | REMOVE PORTION OF EXISTING CONCRETE SLAB AS REQUIRED TO TRENCH FLOOR FOR RELOCATION OF PLUMBING FIXTURES. CONTRACTOR SHALL INCLUDE IN BID ALL TRENCHING REQUIRED TO EXTEND PLUMBING IN NEW WORK. (CONTRACTOR SHALL AVOID SALES FLOOR IF POSSIBLE.) |
| 21 | REMOVE EXISTING WOOD SHELVING, CABINETS AND FIXTURES COMPLETE. |
| 22 | REMOVE EXISTING CHECKOUT COUNTERS AND SHELVING COMPLETE. |
| 23 | REMOVE AND CAP EXISTING CONDUIT / OUTLETS COMPLETE TO BELOW FINISH FLOOR. |



DEMOLITION PLAN
SCALE: 1/8" = 1'-0"
PROJECT NORTH

--

	description
	by
	date
	mark
	revisions

2-6-2020	2/16/20	CSY	XXX	DAE
date	project	designed	drawn	checked



RRMM ARCHITECTS, PC
1317 Executive Blvd, Suite 200
Chesapeake, VA 23320
(757)822-2828 / fax (757)622-6883



FAMILY DOLLAR
FAMILY DOLLAR STORE FDS #791567
501 TENNESSEE AVE NORTH - PARSONS, TN 38363
DEMOLITION PLAN

project
drawing