



paradigm
Engineering Services, Inc.
Seven Dunwoody Park
Suite 115
Atlanta, GA 30038
(770) 605-6030
www.paradigmeng.com

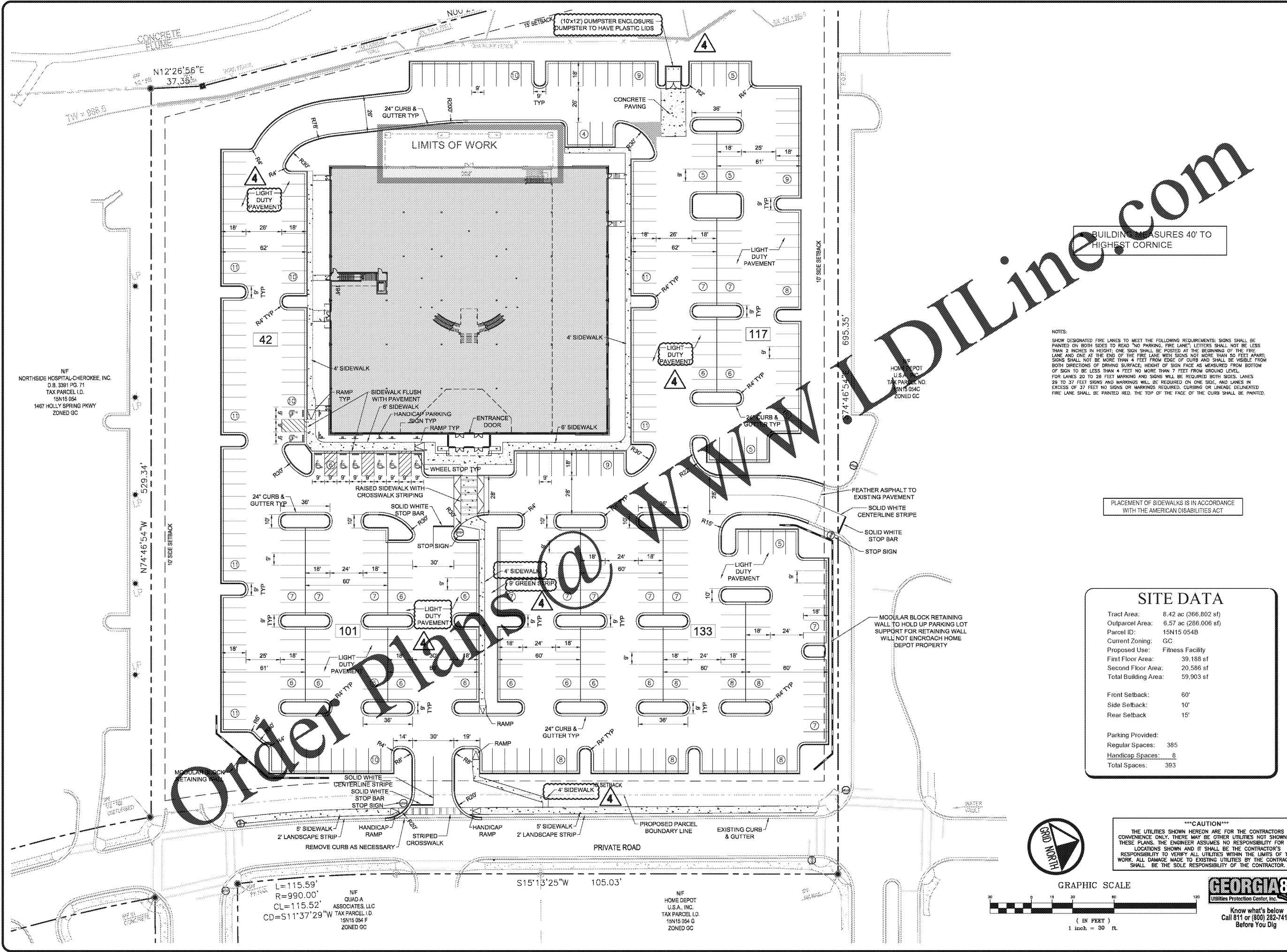
Project No. P-1610
Design By: WBD
Drawn By: LBF
Checked By: WBD
Date: 11/21/16
Scale: 1" = 30'

No.	Date	Revision
1	1/27/17	REVISED PER REVIEW COMMENTS
2	2/24/17	REVISED PER REVIEW COMMENTS
3	3/28/17	REVISED BUILDING FOOTPRINT
4	9/25/17	REVISE DUMPSTER AND UTILITIES

SITE PLAN
ONE LIFE FITNESS

LAND LOT 591 & 624, DISTRICT 15, 2ND SECTION
CHEROKEE COUNTY, GEORGIA

Drawing No.
C2



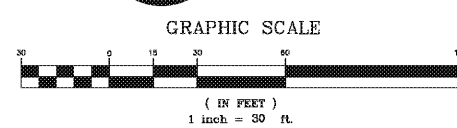
BUILDING MEASURES 40' TO HIGHEST CORNICE

NOTES:
SHOW DESIGNATED FIRE LANES TO MEET THE FOLLOWING REQUIREMENTS: SIGNS SHALL BE PAINTED ON BOTH SIDES TO READ "NO PARKING, FIRE LANE". LETTERS SHALL NOT BE LESS THAN 2 INCHES IN HEIGHT; ONE SIGN SHALL BE POSTED AT THE BEGINNING OF THE FIRE LANE AND ONE AT THE END OF THE FIRE LANE WITH SIGNS NOT MORE THAN 50 FEET APART; SIGNS SHALL NOT BE MORE THAN 4 FEET FROM EDGE OF CURB AND SHALL BE VISIBLE FROM BOTH DIRECTIONS OF DRIVING SURFACE; HEIGHT OF SIGN FACE AS MEASURED FROM BOTTOM OF SIGN TO BE LESS THAN 4 FEET NO MORE THAN 7 FEET FROM GROUND LEVEL. FOR LANES 20 TO 28 FEET MARKING AND SIGNS WILL BE REQUIRED BOTH SIDES. LANES 29 TO 37 FEET SIGNS AND MARKINGS WILL BE REQUIRED ON ONE SIDE. AND LANES IN EXCESS OF 37 FEET NO SIGNS OR MARKINGS REQUIRED. CURBS OR LINEAGE DELINEATED FIRE LANE SHALL BE PAINTED RED. THE TOP OF THE FACE OF THE CURB SHALL BE PAINTED.

PLACEMENT OF SIDEWALKS IS IN ACCORDANCE WITH THE AMERICAN DISABILITIES ACT

SITE DATA	
Tract Area:	8.42 ac (366,802 sf)
Outparcel Area:	6.57 ac (286,006 sf)
Parcel ID:	15N15 054B
Current Zoning:	GC
Proposed Use:	Fitness Facility
First Floor Area:	39,188 sf
Second Floor Area:	20,586 sf
Total Building Area:	59,903 sf
Front Setback:	60'
Side Setback:	10'
Rear Setback:	15'
Parking Provided:	
Regular Spaces:	385
Handicap Spaces:	8
Total Spaces:	393

CAUTION
THE UTILITIES SHOWN HEREON ARE FOR THE CONTRACTORS CONVENIENCE ONLY. THERE MAY BE OTHER UTILITIES NOT SHOWN ON THESE PLANS. THE ENGINEER ASSUMES NO RESPONSIBILITY FOR THE LOCATIONS SHOWN AND IT SHALL BE THE CONTRACTOR'S RESPONSIBILITY TO VERIFY ALL UTILITIES WITHIN THE LIMITS OF THE WORK. ALL DAMAGE MADE TO EXISTING UTILITIES BY THE CONTRACTOR SHALL BE THE SOLE RESPONSIBILITY OF THE CONTRACTOR.



GEORGIA811
Utilities Protection Center, Inc.
Know what's below
Call 811 or (800) 282-7411
Before You Dig

NF
NORTHSIDE HOSPITAL-CHEROKEE, INC.
D.B. 3391 PG. 71
TAX PARCEL I.D.
15N15 054
1467 HOLLY SPRING PKWY
ZONED GC

L=115.59'
R=990.00'
CL=115.52'
CD=S11'37'29"W
NF
QUAD A
ASSOCIATES, LLC
TAX PARCEL I.D.
15N15 054 F
ZONED GC

NF
HOME DEPOT
U.S.A. INC.
TAX PARCEL I.D.
15N15 054 G
ZONED GC