

MECHANICAL SYMBOLS LIST			
SYMBOL	DESCRIPTION	SYMBOL	DESCRIPTION
	SUPPLY DUCTWORK		MANUAL VOLUME DAMPER
	RETURN DUCTWORK		FIRE DAMPER
	EXHAUST DUCTWORK		MOTOR OPERATED DAMPER
	SUPPLY DIFFUSER		FRESH AIR INTAKE
	RETURN GRILLE		TURNING VANES IN ELBOW
	EXHAUST GRILLE		SMOKE DETECTOR
	THERMOSTAT		DIFFUSER TYPE
	RISE IN DUCTWORK		DIFFUSER AIR QUANTITY
	DROP IN DUCTWORK		EQUIPMENT TYPE
			EQUIPMENT TAG

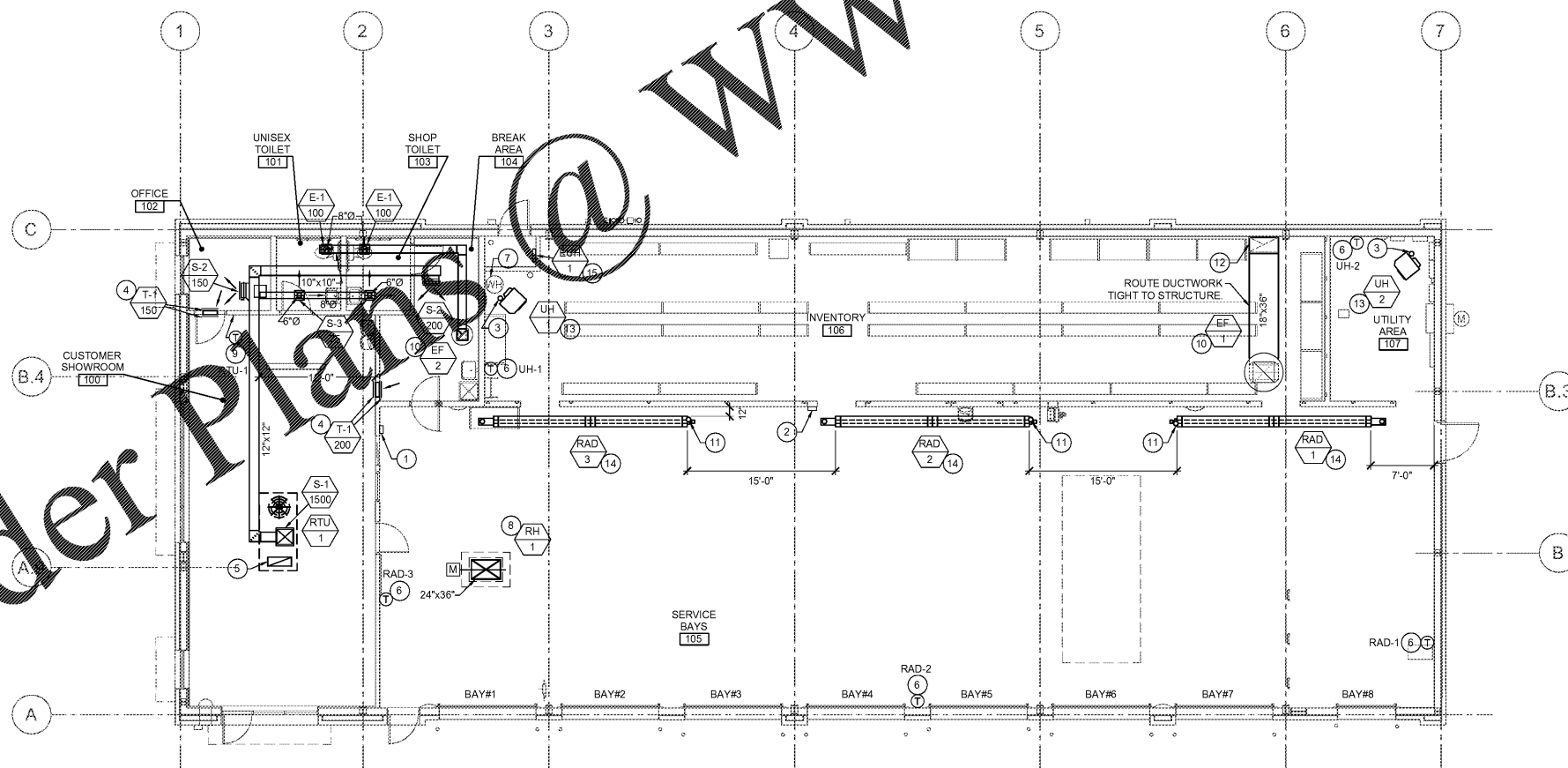
MECHANICAL GENERAL NOTES

- PROVIDE TOXALERT, INC. VENTILATION CONTROL SYSTEM COMPLETE WITH (1) CONTROL UNIT, MODEL (GVU-1) AND (1) CO SENSOR, MODEL (GVU-CO), (RANGE 0 TO 250 PPM). PROVIDE OPTIONAL AUDIBLE ALARM WITH SILENCE SWITCH FOR SECOND STAGE ALARM LEVELS. MANUAL OVERRIDE "PURGE" SWITCH OPTION. AND LABELED LED INDICATORS ON FACE OF CONTROLLER (POWER ON, FAN ON AND POWER TO SENSOR). REMOTE SENSOR SHALL BE TEMPERATURE AND HUMIDITY COMPENSATED AND COMPLETE WITH LEDS INDICATING: NORMAL OPERATION, HIGH CO AND MALFUNCTION.
- VERIFY DIMENSIONS OF UNIT HEATER AND RADIANT HEATER LOCATIONS WITH MANUFACTURER BEFORE INSTALLATION AND COORDINATE WITH LIFT INSTALLER.
- NO GOOSE NECK OR DOWNTURNS ON LOUVERS OR VENT COVERS TO BE USED.
- VENTS, LOUVERS ETC. NOT TO CONFLICT WITH SIGN LOCATIONS. COORDINATE ALL PENETRATIONS WITH ARCHITECTURAL ELEVATIONS, SIGNAGE DRAWINGS AND GENERAL CONTRACTOR PRIOR TO ROUGH IN.
- COORDINATE ALL VENT AND EXHAUST FAN PENETRATIONS THRU THE ROOF, WALLS AND FLOORS WITH GENERAL CONTRACTOR PRIOR TO INSTALLATION.
- REFER TO FIXTURE PLAN SHEET FOR FINAL LOCATIONS AND QUANTITIES OF ALL OPERATIONS EQUIPMENT.
- ALL DUCTWORK SHALL BE CONSTRUCTED OF GALVANIZED STEEL SHEET METAL AND SHALL BE FABRICATED ACCORDING TO THE LATEST EDITION OF THE SMACNA HVAC DUCT CONSTRUCTION STANDARD OF METAL AND FLEXIBLE DUCTWORK. UNDER NO CIRCUMSTANCE SHALL DUCT BOARD BE ALLOWED.
- ALL DUCTWORK DIMENSIONS SHOWN ON PLANS ARE CLEAR DIMENSIONS. WHERE INTERNAL DUCT LINER IS REQUIRED BY SPECIFICATIONS, CONTRACTOR SHALL ADJUST DUCTWORK SIZES ACCORDINGLY.
- ALL INSULATION, JOINING MATERIALS, SEALER, ETC. SHALL HAVE A U.L. FLAME SPREAD CLASSIFICATION OF NO MORE THAN 25 AND A SMOKE DEVELOPMENT RATING NOT MORE THAN 50.
- ALL EXPOSED DUCTWORK SHALL BE INTERNALLY LINED. REFER TO SPECIFICATIONS FOR DUCT LINER SPECIFIC REQUIREMENTS.
- SERVICE BAYS SHALL HAVE OWNER PROVIDED CRUSH PROOF TYPING CO. EXHAUST SOURCE CAPTURE SYSTEM. SYSTEM SHALL BE OUT-THE-DOOR WALL MOUNTED REQUIRED FITTINGS AND ADAPTORS.
- INSTALL EQUIPMENT PER VISCAS 12. *INSTALL PER SEISMIC CONSTRAINTS FOR MECHANICAL EQUIPMENT * PROVIDE ALL REQUIRED SEISMIC BRACING AND SUPPORTS PER USCMA 412 AND LOCAL JURISDICTION.

KEYED PLAN NOTES - THIS SHEET

- TOXALERT CONTROLLER. SEE MECHANICAL GENERAL NOTES FOR FURTHER INFORMATION.
- TOXALERT REMOTE CO SENSOR. MOUNT AT 6'-0" A.F.F. SET SENSOR AT 50 ppm. SEE SPECIFICATIONS FOR FURTHER INFORMATION.
- PROVIDE WITH UNIT HEATER MANUFACTURER'S CONCENTRIC VENT KIT UP THRU ROOF. REFER TO MANUFACTURER'S INSTALLATION INSTRUCTIONS AND DETAIL ON SHEET M2 FOR FURTHER INFORMATION.
- MOUNT TRANSFER GRILLE AT 12'-0" AFF MINIMUM.
- ROUTE FULL SIZE RETURN AIR DUCT 6" BELOW DECK. END OPEN AND COVER WITH 1/2"x1/2" GALVANIZED HARDWARE CLOTH.
- THERMOSTAT SUPPLIED BY MANUFACTURER WITH EQUIPMENT. EQUIPMENT THERMOSTAT TO BE INSTALLED ON AN INSULATED PER MANUFACTURER'S INSTALLATION INSTRUCTIONS AND MOUNTED AT THE HIGHEST OPERABLE CONTROL IS NOT MORE THAN 48" AFF. COORDINATE MOUNTING LOCATION SO THERMOSTAT IS NOT LOCATED BEHIND SERVICE EQUIPMENT.
- ROUTE WATER HEATER FLUE AND INTAKE THRU TOYOTA. TERMINATE THROUGH ROOF WITH CONCENTRIC VENT KIT PER MANUFACTURER'S INSTRUCTIONS AND PROVIDE REQUIRED CLEARANCES FROM WALL AND ROOF.
- PROVIDE ROOF MOUNTED INTAKE HOOD AS SCHEDULED AND INSTALL PER MANUFACTURER'S RECOMMENDATIONS.
- THE CONTRACTOR SHALL FURNISH HONEYWELL T7351 THERMOSTAT (OR EQUAL) WITH INSTALLED SUBBASE. THERMOSTAT TO BE 7 DAY PROGRAMMABLE WITH 4 SETBACK PERIODS PER DAY. THERMOSTAT TO BE INSTALLED PER MANUFACTURER'S INSTALLATION INSTRUCTIONS. MOUNT THERMOSTAT SO THAT THE HIGHEST OPERABLE CONTROL IS NOT MORE THAN 48" AFF. PROVIDE WITH LOCKABLE COVER.
- PROVIDE ROOF MOUNTED EXHAUST FAN AS SCHEDULED AND INSTALL PER MANUFACTURER'S RECOMMENDATIONS. TRANSITION EXHAUST DUCT AS REQUIRED TO MAKE CONNECTION TO EXHAUST FAN.
- ROUTE 4"Ø FLUE SEPARATELY THRU ROOF FOR EACH RADIANT HEATER. REFER TO MANUFACTURER'S INSTALLATION INSTRUCTIONS AND DETAIL ON SHEET M2 FOR FURTHER INFORMATION. COORDINATE PENETRATIONS WITH ARCHITECTURAL ROOF PLAN.
- DROP 36"x18" EXHAUST DUCT DOWN IN LOCATION SHOWN. MOUNT DUCTWORK TO WALL PER SMACNA REQUIREMENTS AND TRANSITION AS REQUIRED TO FAN. TERMINATE AT 3" A.F.F. REFER TO DETAIL ON SHEET M2 FOR FURTHER INFORMATION.
- SUSPEND GAS FIRED UNIT HEATER FROM ROOF STRUCTURE PER MANUFACTURER'S RECOMMENDATIONS. MOUNT AT 13'-0" AFF. REFER TO DETAIL ON SHEET M2 FOR ADDITIONAL INFORMATION.
- SUSPEND GAS FIRED RADIANT HEATER FROM ROOF STRUCTURE PER MANUFACTURER'S INSTALLATION INSTRUCTIONS. MOUNT AT 13'-4" AFF. REFER TO DETAIL ON SHEET M2 AND SERVICE BAY SECTION ON ARCHITECTURAL DRAWINGS FOR FURTHER INFORMATION.
- PROVIDE ELECTRIC UNIT HEATER AS SCHEDULED IN FIRE/SPRINKLER ROOM. MOUNT ELECTRIC UNIT HEATER AT 18" A.F.F. IN UNOBSTRUCTED LOCATION. FIELD VERIFY EXACT LOCATION.

NOTE:
CONTRACTOR SHALL REFER TO SHEET A3 -
ROOF PLAN FOR ACCEPTABLE APPROXIMATE
LOCATIONS OF ROOF PENETRATIONS.



1 MECHANICAL PLAN
M1 SCALE: 1/8" = 1'-0"