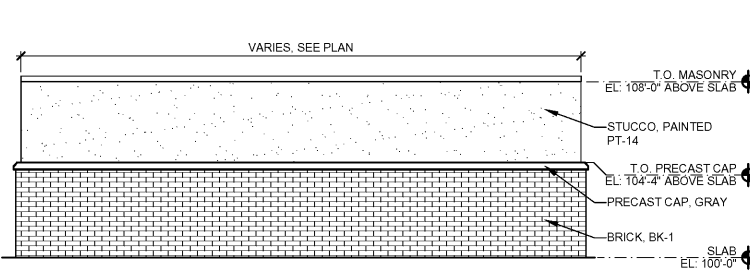
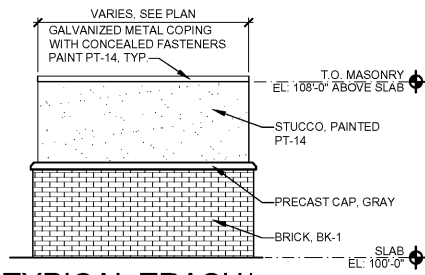


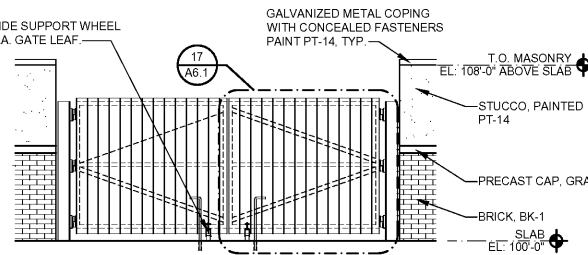
1 TRASH/TIRE ENCLOSURE PLAN
A6.1 SCALE: 1/4"=1'-0"



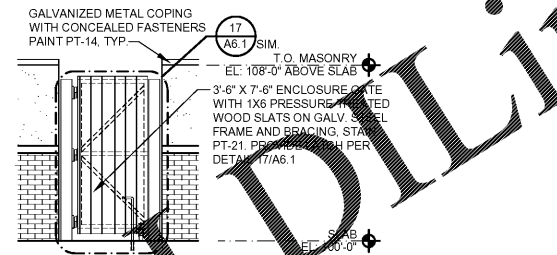
4 TRASH/TIRE ENCLOSURE ELEV.
A6.1 SCALE: 1/4"=1'-0"



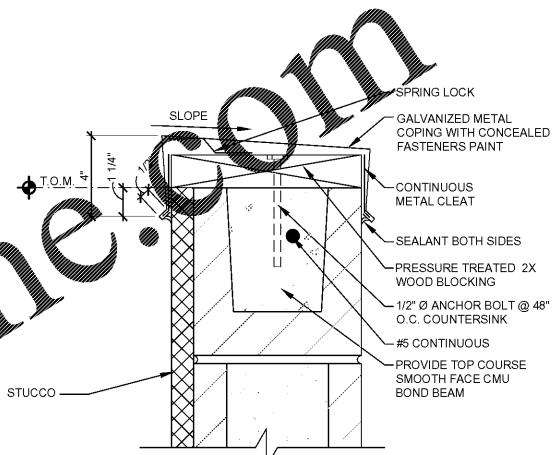
5 TYPICAL TRASH/TIRE ENCLOSURE ELEV.
A6.1 SCALE: 1/4"=1'-0"



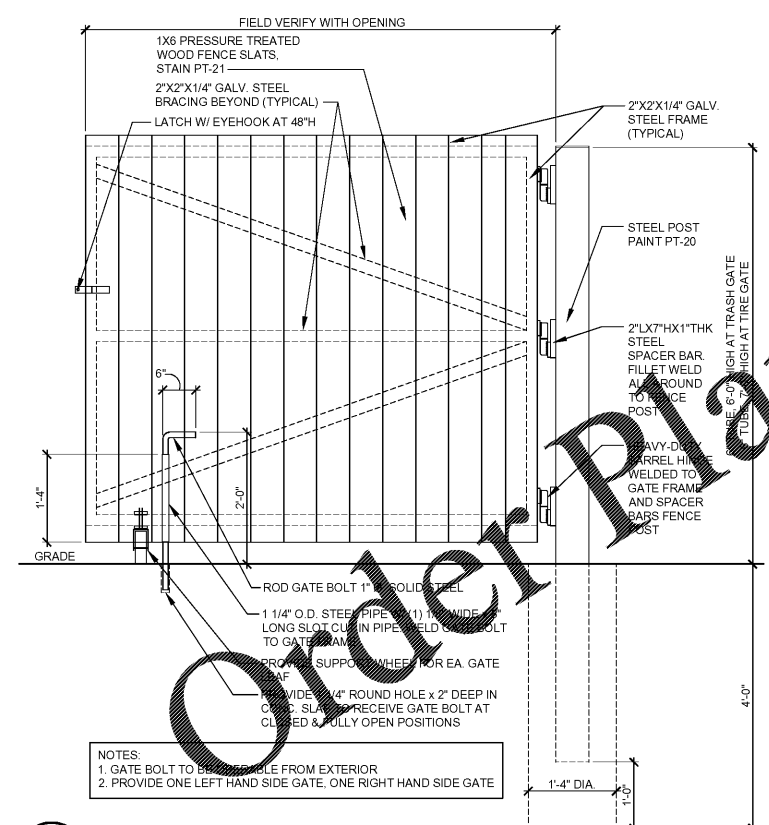
6 TRASH/TIRE ENCLOSURE ELEV.
A6.1 SCALE: 1/4"=1'-0"



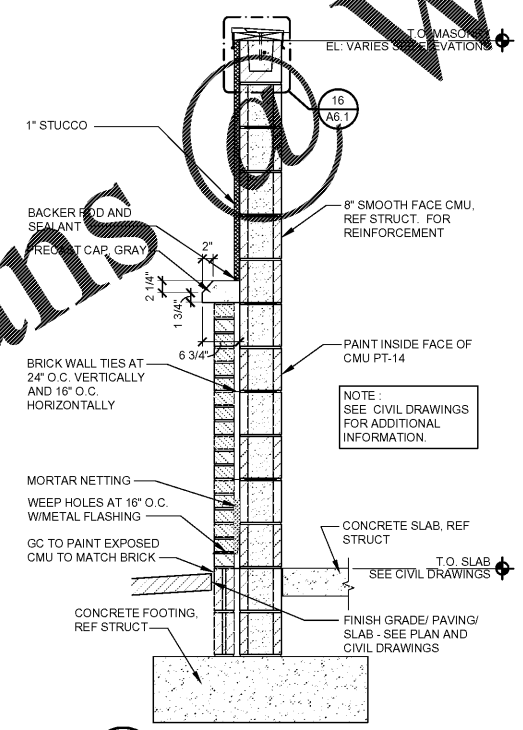
7 TRASH/TIRE ENCLOSURE ELEV.
A6.1 SCALE: 1/4"=1'-0"



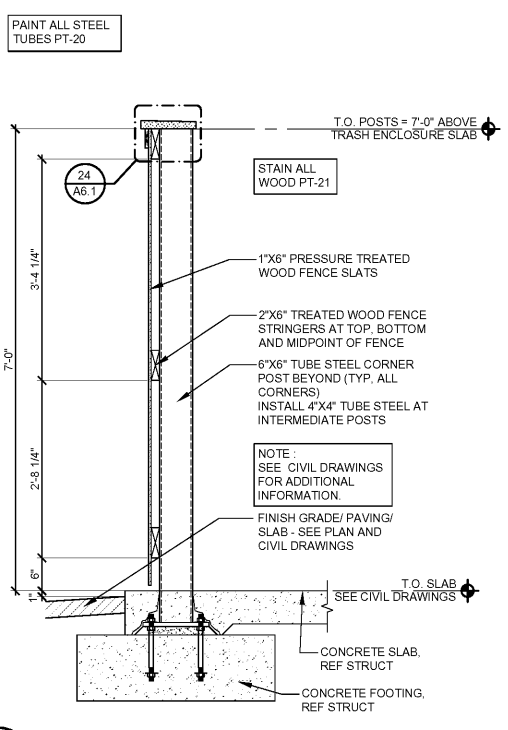
16 TRASH ENCLOSURE MASONRY CAP DETAIL
A6.1 SCALE: 3"=1'-0"



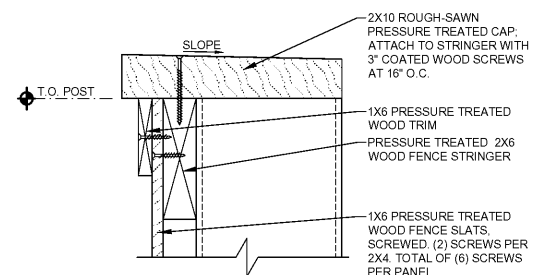
17 GATE ELEVATION
A6.1 SCALE: 3/4"=1'-0"



22 MASONRY SECTION
A6.1 SCALE: 3/4"=1'-0"



23 FENCE SECTION
A6.1 SCALE: 3/4"=1'-0"



24 TRASH ENCLOSURE FENCE CAP DETAIL
A6.1 SCALE: 3"=1'-0"

Order Plans @ WWW.DIline.com

SSA Design Group, P.C.
1437 South Boulder, Suite 550
Tulsa, Oklahoma 74119 3609
P: 918.597.8601
F: 918.597.8601
www.ssgdesigngroup.com

Firestone COMPLETE AUTO CARE

REPRODUCTION OF THIS DRAWING IS PROHIBITED WITHOUT THE WRITTEN PERMISSION OF SSA DESIGN GROUP, P.C. THE DESIGN OF THIS DRAWING IS THE PROPERTY OF SSA DESIGN GROUP, P.C. AND IS LOANED TO THE EXPRESS CONDITION THAT IT IS TO BE USED ONLY FOR THE PROJECT AND SITE SPECIFICALLY IDENTIFIED HEREIN. ANY REPRODUCTION OR MODIFICATION OF THIS DRAWING WITHOUT THE WRITTEN PERMISSION OF SSA DESIGN GROUP, P.C. IS STRICTLY PROHIBITED. THE ACCEPTANCE OF THIS DRAWING BY THE CONTRACTOR SHALL BE DEEMED AN ACCEPTANCE OF THE CONDITIONS AND LIMITATIONS OF THE DRAWING AND AN ADMISSION TO THE EXCLUSIVE OWNERSHIP AND TO THE DRAWING BY BRIDGESTONE METAL OPERATIONS, L.L.C.

NEW FCAC STORE
2020 ER
1762 STATE RD.
SUMMERVILLE, SC

STATE OF ARIZONA REGISTERED ARCHITECTS
SSA DESIGN GROUP, P.C.
Tulsa, OK 97042
STATE OF SOUTH CAROLINA REGISTERED ARCHITECTS
VIRGINIA GAYLE HART
TULSA, OK 13230
01/07/2020

ISSUE BLOCK
1 01/06/20 REV #1

PROPERTY NO.: 317910
6 DIGIT NO.: 799862
4 DIGIT NO.: 013K
AOR PROJECT NUMBER: 1955B67
TO PERMIT DATE: 12-20-19
TO BID DATE: ###-##-##
K.M.P.

SHEET TITLE:
TRASH/TIRE ENCLOSURE DETAILS
SHEET NUMBER:
A6.1