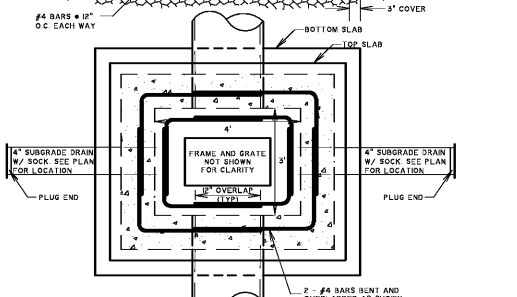
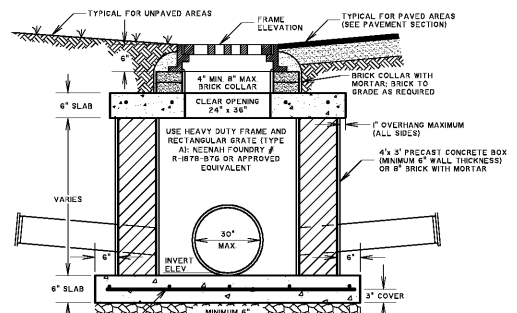


- NOTES:
1. CHAMFER ALL EXPOSED CONCRETE EDGES 3/4"
  2. WHERE BRICK IS USED, ALL EXPOSED SURFACES SHALL BE COATED WITH 1/2" 1:2 MORTAR INSIDE AND OUTSIDE.
  3. IF PRECAST BOX IS USED, TOP, RISER, AND BASE SHALL CONFORM TO THE LATEST REVISION OF ASTM C-478.
  4. ONLY SCDOT SPECIFIED TYPE S OR M MORTAR SHALL BE USED AND ALL BRICK SHALL MEET SCDOT SPECIFICATIONS.

**STANDARD GRATE INLET  
36" PIPE AND LARGER**

G1

NOT TO SCALE

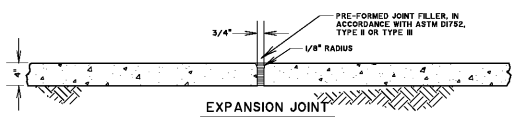


- NOTES:
1. CHAMFER ALL EXPOSED CONCRETE EDGES 3/4"
  2. WHERE BRICK IS USED, ALL EXPOSED SURFACES SHALL BE COATED WITH 1/2" 1:2 MORTAR INSIDE AND OUTSIDE.
  3. IF PRECAST BOX IS USED, TOP, RISER, AND BASE SHALL CONFORM TO THE LATEST REVISION OF ASTM C-478.
  4. ONLY SCDOT SPECIFIED TYPE S OR M MORTAR SHALL BE USED AND ALL BRICK SHALL MEET SCDOT SPECIFICATIONS.

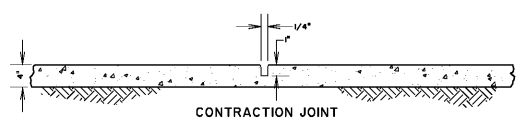
**STANDARD GRATE INLET  
30" PIPE AND SMALLER**

G1

NOT TO SCALE



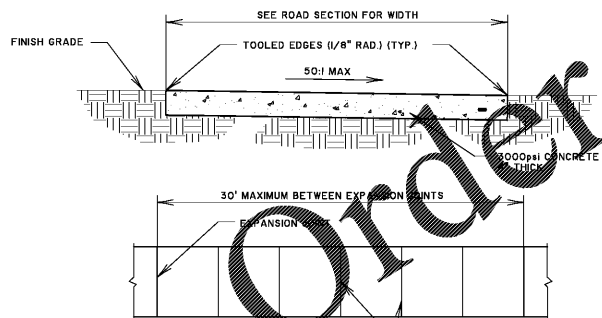
**EXPANSION JOINT**



**CONTRACTION JOINT**

**SIDEWALK JOINT DETAILS**

NOT TO SCALE



- NOTE: PROVIDE EXPANSION JOINTS WHERE SIDEWALK ABUTS STRUCTURES OR OTHER SIDEWALKS.

**PLAN**

- NOTES:
1. SIDEWALKS SHALL HAVE BROOM FINISH

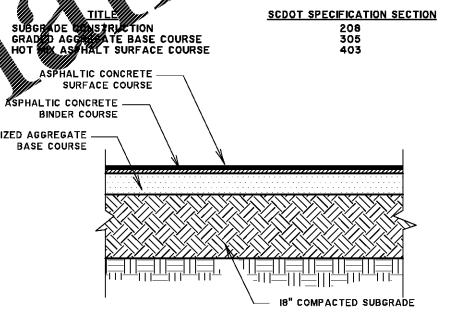
**SIDEWALK DETAIL**

NOT TO SCALE

MATERIAL	LIGHT DUTY ROAD THICKNESS (IN.)	HEAVY DUTY ROAD THICKNESS (IN.)	HEAVY DUTY ROAD THICKNESS (IN.)
STABILIZED AGGREGATE BASE (SCDOT GABC)	6	8	4
ASPHALTIC SURFACE COURSE (SCDOT TYPE C)	2.0	3.0	
ASPHALTIC BINDER COURSE (SCDOT TYPE B)			
PORTLAND CEMENT CONCRETE			6

NOTE: PAVEMENT RECOMMENDATIONS ARE FROM THE GEOTECHNICAL ENGINEERING REPORT PREPARED BY TERRACON CONSULTANTS, IN OCEAN SPRING, SOUTH CAROLINA, ON OCTOBER 16, 2019, FOR CANE BAY AUTOBELL RAMP/ON-RAMP.

ALL SUBGRADE, BASE AND PAVEMENT CONSTRUCTION OPERATIONS AND MATERIAL SHALL MEET THE MINIMUM REQUIREMENTS OF THE SOUTH CAROLINA DEPARTMENT OF TRANSPORTATION'S (SCDOT) STANDARD SPECIFICATIONS FOR HIGHWAY CONSTRUCTION. SCDOT EDITS TO THE APPLICABLE SECTIONS ARE IDENTIFIED AS:



AS PER BERKELEY COUNTY REQUIREMENTS, COMPACTION TESTS MUST BE SUBMITTED DEMONSTRATING COMPACTION OF SUBGRADE SOILS IN ADDITION TO PROOF-ROLL TESTS. COMPACTION MUST MEET MINIMUM REQUIREMENTS SPECIFIED BY THE SCDOT STANDARD SPECIFICATIONS FOR HIGHWAY CONSTRUCTION.

COMPACTION TESTS ARE REQUIRED ALONG THE CURB AND GUTTER ALIGNMENT AND WITHIN THE ROADWAY. COMPACTION TESTS ALONG THE CURB AND GUTTER ALIGNMENT MUST NOT EXCEED A SPACING OF 250 FEET. COMPACTION TESTS WITHIN THE ROADWAY MUST BE SPACED NOT MORE THAN 250 FEET APART AND LOCATIONS STAGGERED. AT LEAST ONE TEST IS REQUIRED IN EACH CUL-DE-SAC AND IN EACH INTERSECTION.

TEST RESULTS MUST BE SUBMITTED TO THE PROJECT ENGINEER, WHO WILL VERIFY THAT THE COMPACTION CONFORMS TO THE PROJECT REQUIREMENTS. VERIFICATION MUST OCCUR PRIOR TO THE PLACEMENT OF CURB AND GUTTER AND/OR BASE COURSE. THE LOCATIONS OF THE TESTS MUST BE INCLUDED IN THE TEST REPORT WHICH MUST BE SUBMITTED TO BERKELEY COUNTY.

**TYPICAL PAVEMENT SECTION**

NOT TO SCALE

REFERENCES

PRECONSTRUCTION SUPPORT ENGINEER

SCDOT

DESIGN STANDARDS OFFICE  
903 PARK STREET  
ROOM 405  
COLUMBIA, SC 29201

STANDARD DRAWING  
CATCH BASIN  
TYPE 1B

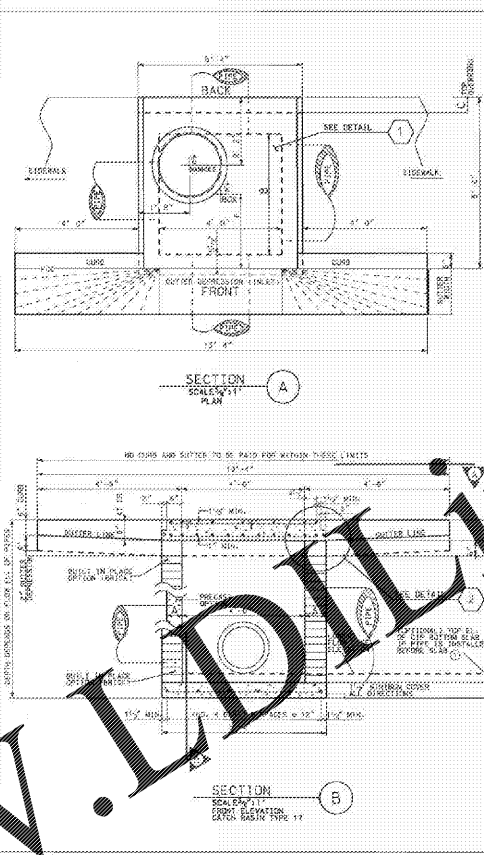


TABLE T19-016A

DESCRIPTION	MINIMUM CLEARANCE	MINIMUM CLEARANCE
A	2'-0"	2'-0"
B	2'-0"	2'-0"
C	2'-0"	2'-0"
D	2'-0"	2'-0"
E	2'-0"	2'-0"
F	2'-0"	2'-0"

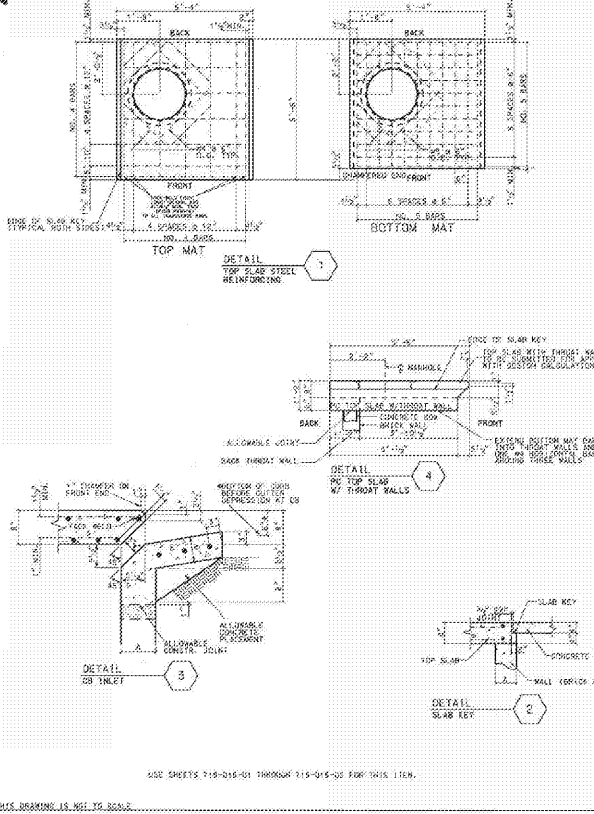
CONTRACTOR SHALL USE A COMBINATION OF BUILDING MATERIALS AS APPROVED BY THE DESIGNER TO CONSTRUCT THE CATCH BASIN TO MEET THE FOLLOWING REQUIREMENTS:

1. THE CATCH BASIN SHALL BE CONSTRUCTED OF PRECAST CONCRETE OR CAST-IN-PLACE CONCRETE.
2. THE CATCH BASIN SHALL BE CONSTRUCTED WITH A MINIMUM CLEARANCE OF 2'-0" FROM ALL ADJACENT STRUCTURES AND UTILITIES.
3. THE CATCH BASIN SHALL BE CONSTRUCTED WITH A MINIMUM CLEARANCE OF 2'-0" FROM ALL ADJACENT STRUCTURES AND UTILITIES.
4. THE CATCH BASIN SHALL BE CONSTRUCTED WITH A MINIMUM CLEARANCE OF 2'-0" FROM ALL ADJACENT STRUCTURES AND UTILITIES.
5. THE CATCH BASIN SHALL BE CONSTRUCTED WITH A MINIMUM CLEARANCE OF 2'-0" FROM ALL ADJACENT STRUCTURES AND UTILITIES.
6. THE CATCH BASIN SHALL BE CONSTRUCTED WITH A MINIMUM CLEARANCE OF 2'-0" FROM ALL ADJACENT STRUCTURES AND UTILITIES.
7. THE CATCH BASIN SHALL BE CONSTRUCTED WITH A MINIMUM CLEARANCE OF 2'-0" FROM ALL ADJACENT STRUCTURES AND UTILITIES.
8. THE CATCH BASIN SHALL BE CONSTRUCTED WITH A MINIMUM CLEARANCE OF 2'-0" FROM ALL ADJACENT STRUCTURES AND UTILITIES.
9. THE CATCH BASIN SHALL BE CONSTRUCTED WITH A MINIMUM CLEARANCE OF 2'-0" FROM ALL ADJACENT STRUCTURES AND UTILITIES.
10. THE CATCH BASIN SHALL BE CONSTRUCTED WITH A MINIMUM CLEARANCE OF 2'-0" FROM ALL ADJACENT STRUCTURES AND UTILITIES.

SECTION A

SECTION B

SECTION C



GENERAL NOTES:

1. THE CATCH BASIN SHALL BE CONSTRUCTED OF PRECAST CONCRETE OR CAST-IN-PLACE CONCRETE.
2. THE CATCH BASIN SHALL BE CONSTRUCTED WITH A MINIMUM CLEARANCE OF 2'-0" FROM ALL ADJACENT STRUCTURES AND UTILITIES.
3. THE CATCH BASIN SHALL BE CONSTRUCTED WITH A MINIMUM CLEARANCE OF 2'-0" FROM ALL ADJACENT STRUCTURES AND UTILITIES.
4. THE CATCH BASIN SHALL BE CONSTRUCTED WITH A MINIMUM CLEARANCE OF 2'-0" FROM ALL ADJACENT STRUCTURES AND UTILITIES.
5. THE CATCH BASIN SHALL BE CONSTRUCTED WITH A MINIMUM CLEARANCE OF 2'-0" FROM ALL ADJACENT STRUCTURES AND UTILITIES.
6. THE CATCH BASIN SHALL BE CONSTRUCTED WITH A MINIMUM CLEARANCE OF 2'-0" FROM ALL ADJACENT STRUCTURES AND UTILITIES.
7. THE CATCH BASIN SHALL BE CONSTRUCTED WITH A MINIMUM CLEARANCE OF 2'-0" FROM ALL ADJACENT STRUCTURES AND UTILITIES.
8. THE CATCH BASIN SHALL BE CONSTRUCTED WITH A MINIMUM CLEARANCE OF 2'-0" FROM ALL ADJACENT STRUCTURES AND UTILITIES.
9. THE CATCH BASIN SHALL BE CONSTRUCTED WITH A MINIMUM CLEARANCE OF 2'-0" FROM ALL ADJACENT STRUCTURES AND UTILITIES.
10. THE CATCH BASIN SHALL BE CONSTRUCTED WITH A MINIMUM CLEARANCE OF 2'-0" FROM ALL ADJACENT STRUCTURES AND UTILITIES.

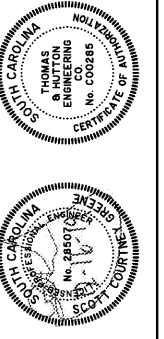
REFERENCES

PRECONSTRUCTION SUPPORT ENGINEER

SCDOT

DESIGN STANDARDS OFFICE  
903 PARK STREET  
ROOM 405  
COLUMBIA, SC 29201

STANDARD DRAWING  
CATCH BASIN  
TYPE 1B



NO.	REVISIONS	BY	DATE

**THOMAS & HUTTON**

682 Johnnie Dodds Boulevard • Suite 100  
Mt. Pleasant, SC 29464 • 843.849.0200  
www.thomasandhutton.com

**PAVILION DEVELOPMENT COMPANY**  
BERKELEY COUNTY, SOUTH CAROLINA

**FIRESTONE SITE DEVELOPMENT  
PAVING, GRADING, AND DRAINAGE DETAILS**

JOB NO:	J-23390.8120
DATE:	10/04/19
DRAWN:	JEA
DESIGNED:	CAE
REVIEWED:	SCG
APPROVED:	SCG
SCALE:	1" = 1'

**C3.4**