

FIRESTONE SITE DEVELOPMENT

BERKELEY COUNTY, SOUTH CAROLINA

TM# 195-00-00-111 & 195-00-00-072

OCTOBER 4, 2019

LATEST REVISION: DECEMBER 12, 2019

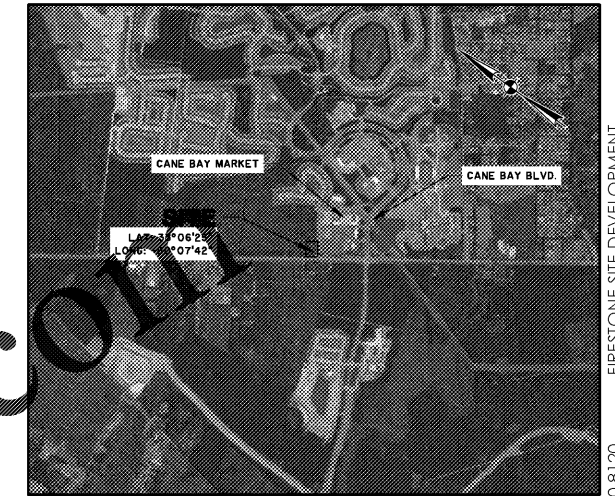
J-23390.8120



PERMIT SET - FOR REVIEW PURPOSES ONLY

REVISION HISTORY			
REV. NO.	REVISION	BY	DATE
1	REVISED PER BERKELEY COUNTY COMMENTS	CAE	12/12/19

SUBMITTAL HISTORY	
SUBMITTED TO	DATE
RESUBMITTED TO BERKELEY COUNTY	12/16/19
SUBMITTED TO BERKELEY COUNTY AND SCDHEC	10/4/19



VICINITY MAP
SCALE: 1" = 2000'

Sheet List Table	
Sheet Number	Sheet Title
C0	COVER SHEET
G1.1	GENERAL NOTES AND LEGEND
G1.2	SURVEY CONTROL PLAN
C1.1	OVERALL SITE PLAN AND SHEET INDEX
G1.1	EXISTING CONDITIONS
EC0.1	SWPPP - NOTES
EC0.2	SWPPP - CHARTS
EC1.1	SWPPP PLAN
EC4.1	SWPPP - DETAILS
C2.1	WATER AND SEWER PLAN
C2.2	SEWER PROFILES
C2.3	WATER AND SEWER DETAILS
C2.4	WATER AND SEWER DETAILS
C2.5	WATER AND SEWER DETAILS
C3.1	PAVING, GRADING, AND DRAINAGE PLAN
C3.2	PAVING, GRADING, AND DRAINAGE PLAN
C3.3	DRAINAGE PROFILES
C3.4	PAVING, GRADING, AND DRAINAGE DETAILS
C3.5	PAVING, GRADING, AND DRAINAGE DETAILS
C3.6	PAVING, GRADING, AND DRAINAGE DETAILS
C4.1	STAKING, STRIPING, AND SIGNAGE PLAN
C5.1	ACCESSIBLE ROUTE PLAN
L1.0	LANDSCAPE PLAN
L1.1	PLANTING DETAILS
L1.2	LANDSCAPING SPECIFICATIONS
L1.3	GRASSING SPECIFICATIONS
A6.1	ARCHITECTURAL TRASH/TIRE ENCLOSURE DETAILS

Order Plans @ www.LDILine.com



Know what's below.
Call before you dig.



682 Johnnie Dodds Blvd. • Suite 100
Mt. Pleasant, SC 29464
p.843.849.0200
www.thomasandhutton.com

J-23390.8120
10/04/19
FIRESTONE SITE DEVELOPMENT