

architect | designer
BCT ARCHITECTS
 100 North Charles Street, 18th floor
 Baltimore, MD 21201
 410.837.2727
 www.bctarchitects.com

structural engineer
CARROLL ENGINEERING, INC.
 215 Shilling Circle, Suite 102
 Hunt Valley, MD 21031
 410.785.7423
 www.carrollengineering.com

mep engineer
KIBART, INC.
 901 Dulany Valley Road, Suite 301
 Towson, MD 21284
 410.494.1111
 www.kibart.com

civil engineer
H.A. Inc.
 29A Leiback Drive
 Charleston, SC 29407
 1.843.763.1166
 www.hainc.com

landscape architect
LAND DESIGN, LLC
 200 South Peyton Street
 Alexandria, VA 22314
 1.703.542.7794
 www.LandDesign.com

interior designer
AJMEN ASNER
 100 North Charles Street, Suite 910
 Baltimore, MD 21201
 410.837.2767
 www.ajmenasner.com

code + life safety consultant
KOFFEL ASSOCIATES, INC.
 8815 Centre Park Dr., Suite 200
 Columbia, MD 21045
 410.794.1610
 www.koffel.com

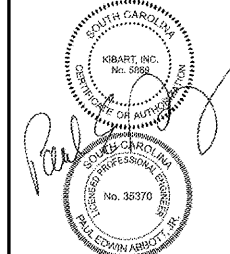
project
 DHEC Project Number #: 637063

BEES FERRY SENIOR LIVING

3097 Bees Ferry Road
 Charleston, South Carolina 29414

client | owner
 3097 BEES FERRY ROAD, LLC
 3535 Colonel Vanderhoof Circle
 Mount Pleasant, SC 29466
 1.843.296.3985

seal | signature



10/18/2019

revisions	No.	Date	Title

sheet title

ENLARGED ELECTRICAL PLANS - IL UNITS

issue date 10/18/2019

sheet number

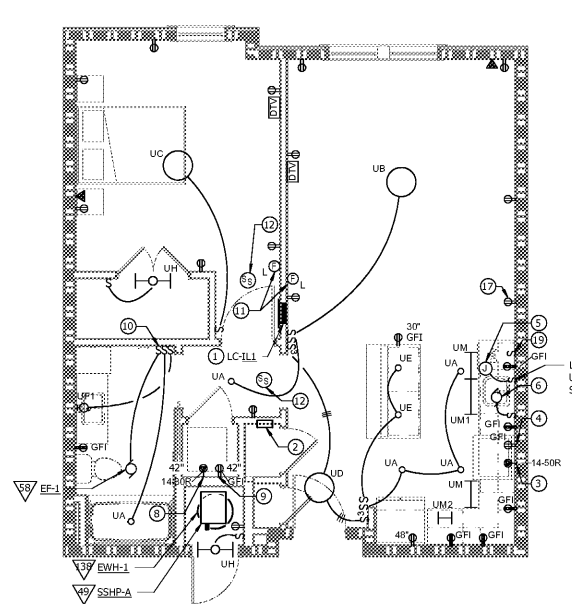
E-312

GENERAL NOTES:

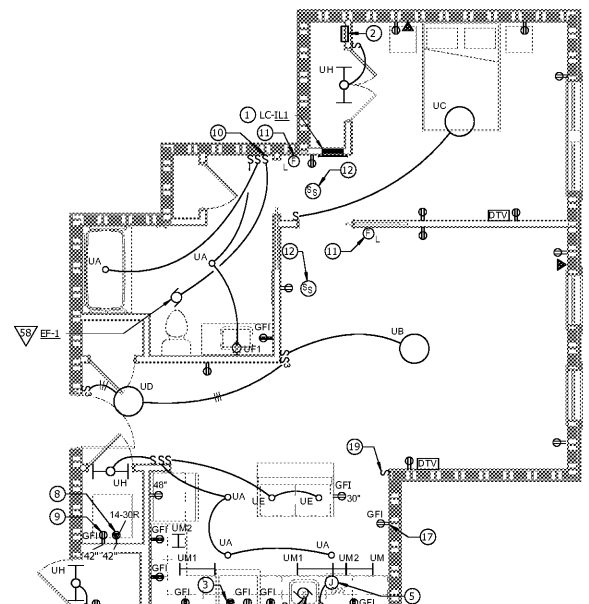
- REFER TO GENERAL PROJECT NOTES ON DRAWING E-001 FOR ADDITIONAL REQUIREMENTS FOR ALL UNITS.
- REFER TO LOADCENTER SCHEDULES FOR ALL DWELLING UNIT BRANCH CIRCUITS.
- ALL UNIT 120V BRANCH CIRCUITS SHALL HAVE ARC FAULT CIRCUIT INTERRUPTER (AFCI) PROTECTION, PER NEC 210.12.
- ALL WIRING DEVICES IN UNITS SHALL BE RESIDENTIAL GRADE. COLOR SHALL BE WHITE WITH MATCHING COVERPLATES.
- ALL RECEPTACLES IN UNITS SHALL BE TAMPER RESISTANT (TR) PER NEC-406.12.
- ALL EXTERIOR ENTRY LIGHTS FOR INDIVIDUAL UNITS SHALL HAVE INTEGRAL PHOTOCELL OPERATION.
- PROVIDE BRANCH CIRCUIT FROM EACH UNIT'S LOADCENTER TO OUTDOOR, ROOFTOP OR ON-GRADE CONDENSING UNIT. BRANCH WIRING TO CONDENSING UNITS SHALL FOLLOW THE SAME PATH AS REFRIGERANT LINES. PROTECT ALL EXPOSED EXTERIOR WIRING ON ROOF IN PVC REWAY WITH FIP CONNECTIONS TO CU'S VIA FLEXIBLE, NON-METALLIC CONDUIT.
- DISPOSALS ARE SHOWN AS HARDWIRED, HOWEVER IF SINGLE ARE REQUIRED, PROVIDE GFI RECEPTACLE BELOW SINK OR GFI BREAKER.
- ONLY 3 RECEPTACLES ON EACH SMALL APPLIANCE CIRCUIT.
- CEILING FAN LIGHT IN LIVING ROOM CONTROLLED SEPARATELY FROM FAN SWITCH.
- CENTER AND LINK UNDERCABINET LIGHTS TOGETHER WHERE SHOWN IN STRAIGHT LINE.
- BEDROOM DOORS ARE TO BE LOCKABLE FROM THE INSIDE TO MEET WORKING CLEARANCE OF PANEL.

DRAWING NOTES:

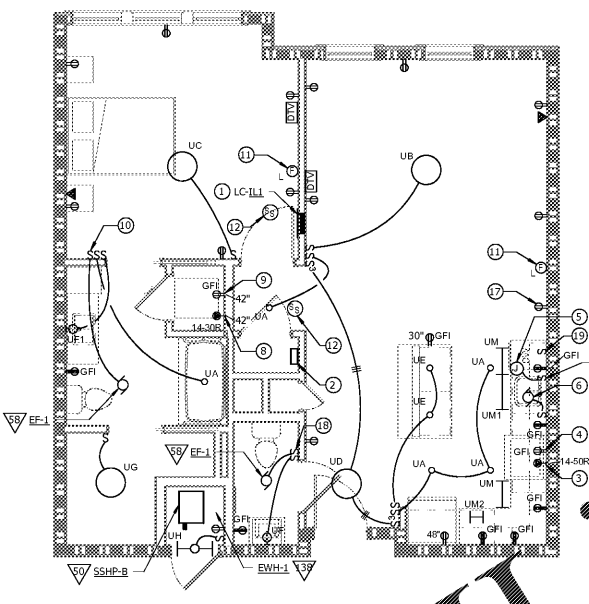
- SWC (CENTRALIZED STRUCTURED WIRING CABINET) FLUSH MTD IN WALL CAVITY. TERMINATE ALL UNIT VOICE, DATA AND CATV CABLING IN CABINET. PROVIDE DUPLEX POWER OUTLET (CONNECT RECEPTACLE TO LIVING ROOM CIRCUIT) FOR UTILITY (COMCAST OR VERIZON) FO CONVERTER. SEE "VOICE/DATA/CATV CABLE RISER" ON DWG E-410.
- NEMA 14-50R OUTLET FOR ELEC RANGE. M.H. 6" AFF. COORDINATE EXACT LOCATION WITH APPLIANCE MFG'S INSTALLATION INSTRUCTIONS.
- CONNECTION FOR RANGE EXHAUST MICROWAVE/HOOD/LIGHT. LOCATE RECEPTACLE IN CABINET ABOVE MICROWAVE.
- CONNECTION FOR DISHWASHER, PER MFG'S INSTRUCTIONS. PROVIDE DEDICATED CIRCUIT TO GFCI/AFCI BREAKER.
- CONNECTION TO GARBAGE DISPOSAL BELOW SINK, WITH TOGGLE SWITCH ON WALL ABOVE COUNTER. PROVIDE DEDICATED CIRCUIT TO GFCI/AFCI BREAKER.
- OUTLET MOUNTED HORIZONTALLY, FLUSH IN CABINET FACE JUST BELOW COUNTER TOP.
- NEMA 14-30R OUTLET FOR ELEC DRYER. FLUSH MOUNTED AT 42" AFF.
- RECEPTACLE FOR WASHER. M.H. 42" AFF. PROVIDE DEDICATED CIRCUIT TO GFCI/AFCI BREAKER.
- COMBINATION BATHROOM EXHAUST FAN DELAY TIMER SWITCH (LEVITON SMART EXHAUST OR EQUAL). FURNISHED BY MECHANICAL DIVISION, INSTALLED BY ELECTRICAL.
- LOW-FREQUENCY ALARM SPEAKER CONNECTED TO BUILDING FIRE ALARM SYSTEM. M.H. 80" AFF.
- 120V SMOKE DETECTOR. INTERCONNECT WITH OTHER SMOKE AND/OR CO DETECTORS IN SAME DWELLING UNIT.
- NOT USED.
- REFER TO ALTERNATE PART PLAN ON THIS SHEET FOR ALTERNATE LAYOUT OF THIS ROOM.
- NOT USED.
- NOT USED.
- CONNECT TO THIRD KITCHEN SMALL APPLIANCE CIRCUIT.
- PROVIDE A SWITCH FOR EACH ELEMENT OF EXHAUST FAN/LIGHT.
- CONTROLS UNDERCABINET LIGHTING.



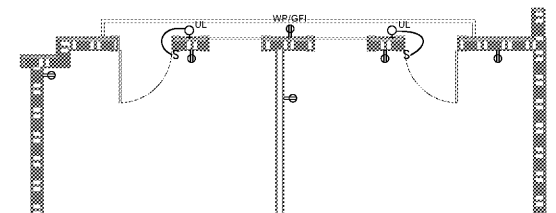
UNIT PART PLANS - IL - A1
 SCALE: 1/4" = 1'-0"



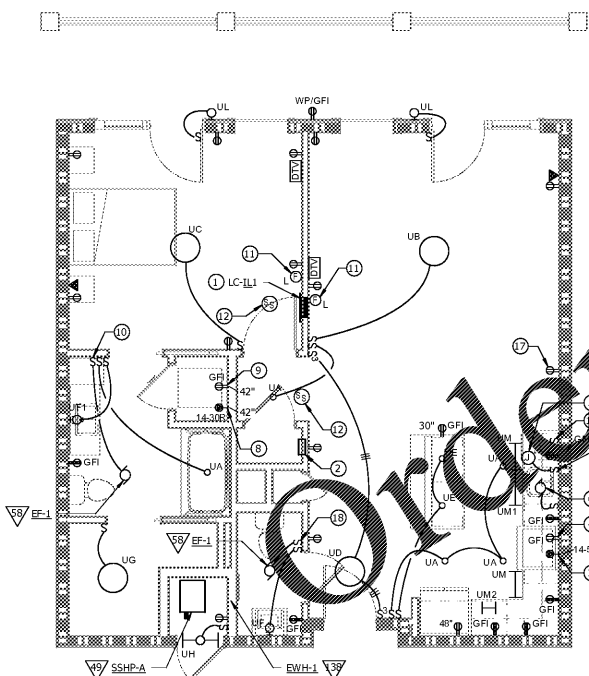
UNIT PART PLANS - IL - A2
 SCALE: 1/4" = 1'-0"



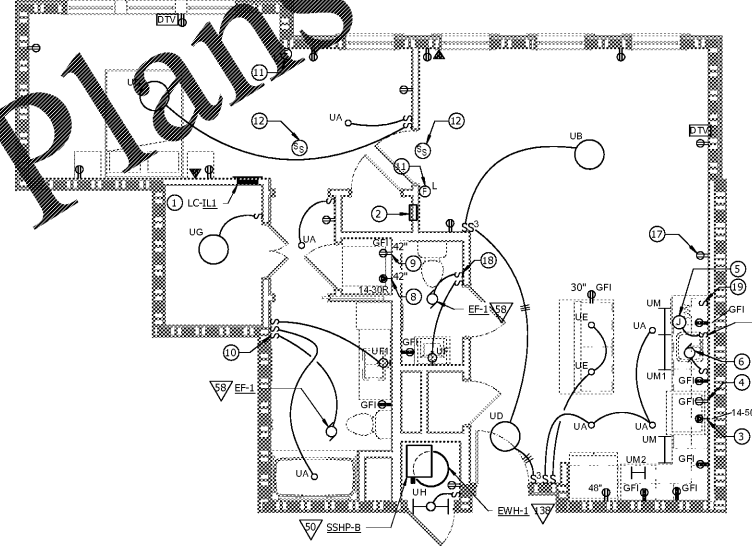
UNIT PART PLANS - IL - B1
 SCALE: 1/4" = 1'-0"



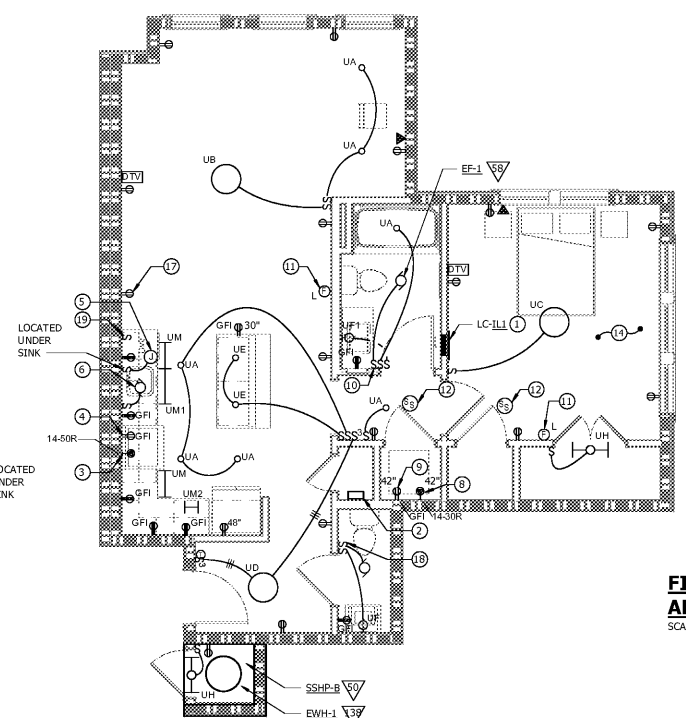
UNIT PART PLANS - IL - B2.1
 SCALE: 1/4" = 1'-0"



UNIT PART PLANS - IL - B2
 SCALE: 1/4" = 1'-0"



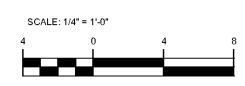
UNIT PART PLANS - IL - B3
 SCALE: 1/4" = 1'-0"



UNIT PART PLANS - IL - B4
 SCALE: 1/4" = 1'-0"

FIRST FLOOR PART PLAN - IL - B4 - ELECTRICAL ALTERNATE

SCALE: 1/4" = 1'-0"



Order Plans @

WWW.LDILLING.COM