



architect | designer
BCT ARCHITECTS
100 North Charles Street, 18th floor
Baltimore, MD 21201
410.837.2727
www.bctarchitects.com

structural engineer
CARROLL ENGINEERING, INC.
215 Shilling Circle, Suite 102
Hunt Valley, MD 21031
410.785.7423
www.carrollengineering.com

mep engineer
KIBART, INC.
901 Dulane Valley Road, Suite 301
Towson, MD 21284
410.494.1111
www.kibart.com

civil engineer
HLA, Inc.
29A Leinback Drive
Charleston, SC 29407
1.843.752.1166
www.hlainc.com

landscape architect
LAND DESIGN, LLC
200 South Peyton Street
Alexandria, VA 22314
1.703.540.7764
www.LandDesign.com

interior designer
AUMEN ASNER
100 North Charles Street, Suite 910
Baltimore, MD 21201
410.837.2767
www.aumenasner.com

code + life safety consultant
KOFFEL ASSOCIATES, INC.
8815 Centre Park Dr., Suite 200
Columbia, MD 21045
410.794.1610
www.koffel.com

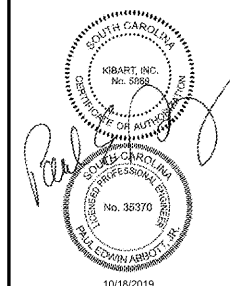
project
DHEC Project Number #: 637063

BEES FERRY SENIOR LIVING

3097 Bees Ferry Road
Charleston, South Carolina 29414

client | owner
3097 BEES FERRY ROAD, LLC
3535 Colonel Vanderveil Circle
Mount Pleasant, SC 29466
1.843.296.3985

seal | signature



revisions

No.	Date	Title

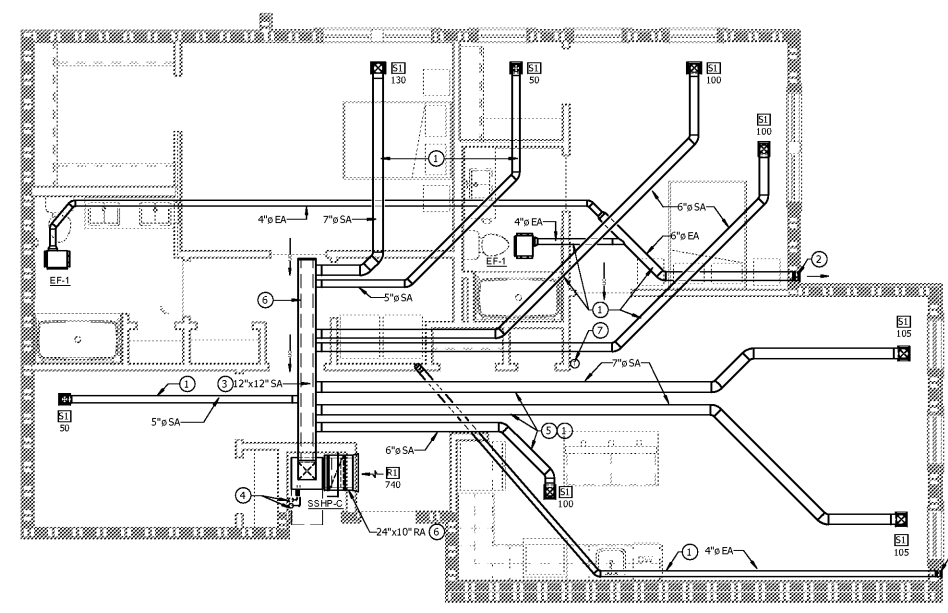
sheet title

TYPICAL UNIT PART PLANS - IL - MECHANICAL

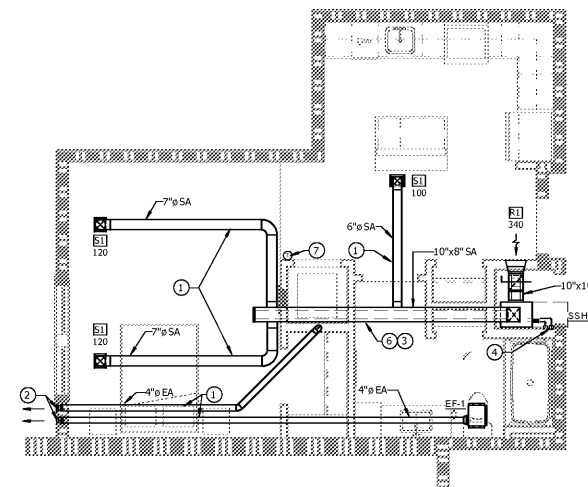
issue date 10/18/2019

sheet number

M-407



UNIT IL - E1
SCALE: 1/4" = 1'-0"



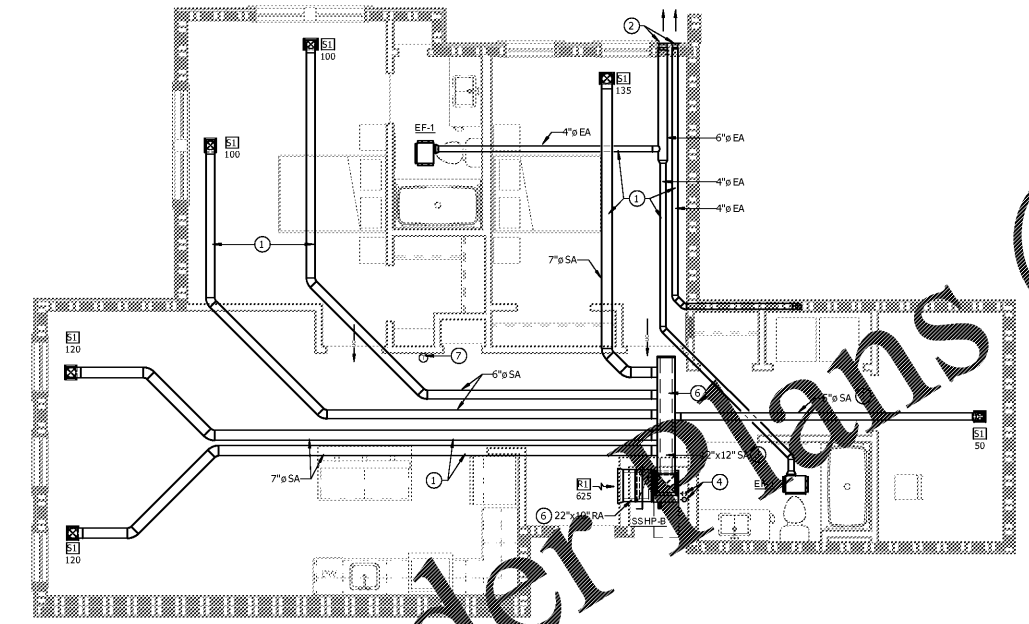
UNIT IL - GUEST
SCALE: 1/4" = 1'-0"

DRAWING NOTES

- ROUTE DUCTWORK BETWEEN OR THROUGH JOISTS. PROVIDE OFFSETS BETWEEN DUCTWORK AS NEEDED (TYPICAL).
- WALL VENTS TERMINAL WITH BACKDRAFT DAMPER, WITHOUT SCREEN. PROVIDE EAVE VENTS SIZED FOR DUCTS IN EAVE FOR TOP FLOOR UNITS IN LIEU OF WALL VENTS.
- ROUTE SUPPLY DUCT BETWEEN THE TRUSSES.
- RS/RL PIPING. SIZE AND ROUTE REFRIGERANT PIPING TO ASSOCIATED OUTDOOR UNIT PER MANUFACTURER'S RECOMMENDATIONS.
- OFFSET SUPPLY AS NECESSARY WHERE SUPPLY DUCTS CROSSES DRYER EXHAUST DUCTWORK.
- 1 1/2" DUCT SOUND LINING (TYPICAL).
- WALL MOUNTED THERMOSTAT. CONFIRM THERMOSTAT LOCATIONS WITH ARCHITECT PRIOR TO MOUNTING. INSTALL WITH ALL OPERABLE PARTS NO MORE THAN 4'-0" AFF.

GENERAL NOTES

- NOT ALL DRAWINGS NOTES WILL APPLY TO ALL UNIT PLANS.
- PROVIDE RADIATION CEILING RADIATION DAMPERS IN SUPPLY AIR DUCTWORK AT UNIT. REFER TO DETAIL - TYPICAL SPLIT SYSTEM HEAT PUMP - APARTMENT AIR HANDLING UNITS ON SHEET H-502 FOR LOCATION AND ADDITIONAL INFORMATION.
- REFER TO FLOOR PLAN FOR ACTUAL APARTMENT ORIENTATION. APARTMENT AND DUCTWORK ROTATED AND/OR MIRRORED.
- COORDINATE DUCTWORK WITH ALL OTHER SERVICES FOR LIGHTS - SEE ELECTRICAL PARTS FOR LIGHTS LOCATIONS.
- COORDINATE ALL EXHAUST VENT TERMINAL LOCATIONS WITH ALL OTHER SERVICES. REVIEW STRUCTURAL DRAWINGS, TRUSSES AND SHEAR WALL SHOP DRAWINGS.
- INSTALL ANGLE DAMPERS. GRILLES AND REGISTER ASSEMBLY. REGISTER ASSEMBLY SPECIFIED AS PART OF REGISTER, OR GRILLE AND REGISTER ASSEMBLY.
- ANGULARITY IN DUCTWORK ROUTING, DUCTWORK SIZE AND PIPE SIZING MUST BE VERIFIED AND DOCUMENTED WITH THE ENGINEER OF RECORD. ENGINEER OF RECORD WILL NOT BE RESPONSIBLE FOR VIOLATIONS FROM CONTRACT DOCUMENTS. MAINTAIN MINIMUM 3' CLEARANCE BETWEEN EXHAUST AIR TERMINATIONS AND OPERABLE WINDOWS. PROVIDE MOCK-UP OF A TYPICAL MECHANICAL ROOM OF A TL TYPE RESIDENT ROOM INCLUDING AIR HANDLING UNIT, WATER HEATER, AND ALL ASSOCIATED PIPING AND VALVING. THIS SHALL BE REVIEWED AND APPROVED BY OWNER, ARCHITECTS, AND ENGINEERS BEFORE ALL OTHER MECHANICAL ROOMS ARE CONSTRUCTED.



UNIT IL - E2
SCALE: 1/4" = 1'-0"

www.LDILine.com

Order Plans

