

revisions table with columns for No., Date, and Title.

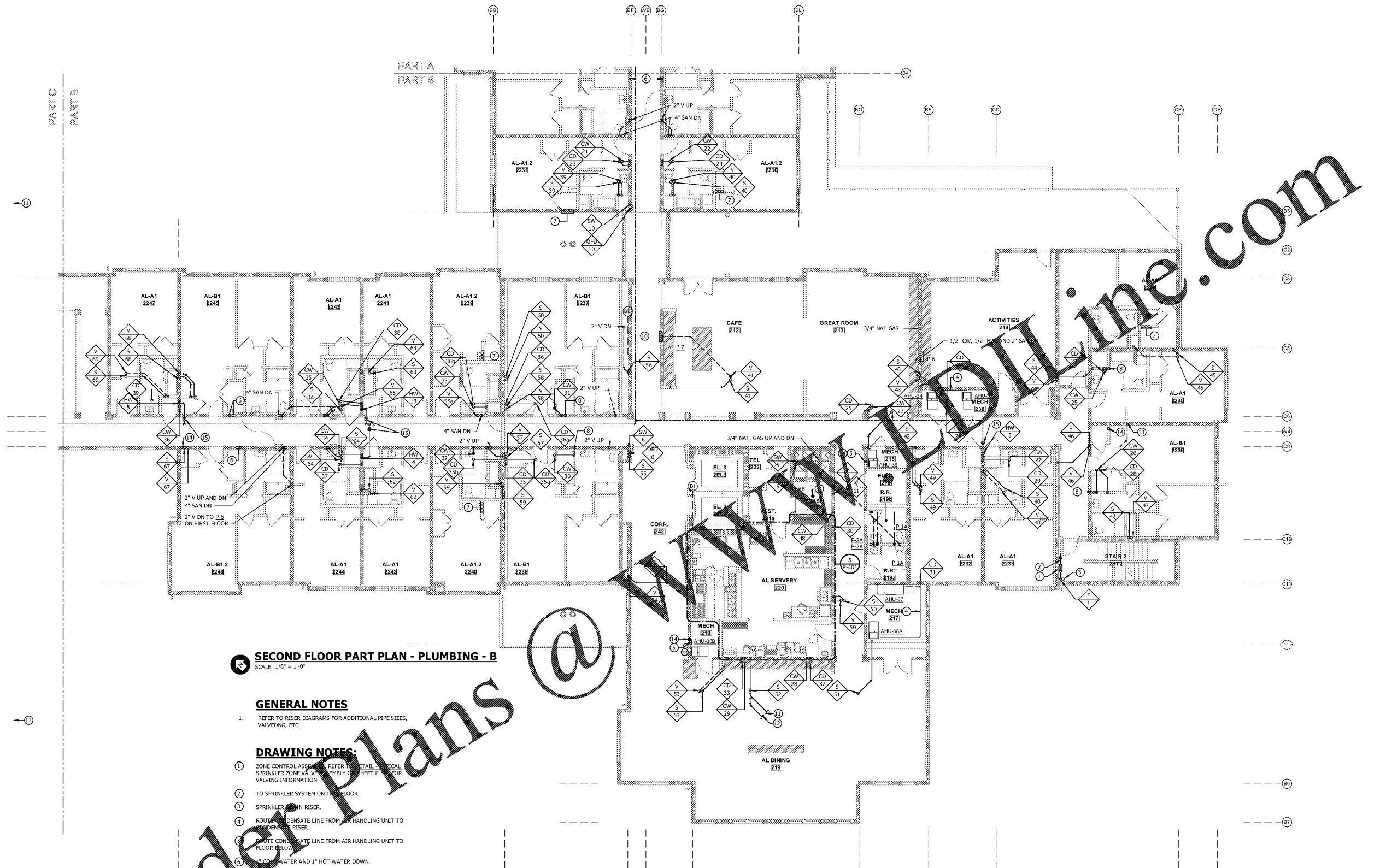
sheet title

SECOND FLOOR PART PLAN - PLUMBING - B

issue date 10/18/2019

sheet number

P-207



SECOND FLOOR PART PLAN - PLUMBING - B
SCALE: 1/8" = 1'-0"

GENERAL NOTES

- 1. REFER TO RISER DIAGRAMS FOR ADDITIONAL PIPE SIZES, VALVING, ETC.

DRAWING NOTES:

- 1 ZONE CONTROL ASSUMPTIONS. REFER TO MECHANICAL SPRINKLER ZONE VALVING ASSEMBLY SHEET P-5 FOR VALVING INFORMATION.
- 2 TO SPRINKLER SYSTEM ON THIS FLOOR.
- 3 SPRINKLER MAIN RISER.
- 4 ROUTE CONDENSATE LINE FROM AIR HANDLING UNIT TO CONDENSATE RISER.
- 5 ROUTE CONDENSATE LINE FROM AIR HANDLING UNIT TO FLOOR DRAIN.
- 6 1/2" COLD WATER AND 1" HOT WATER DOWN.
- 7 1" COLD WATER, 1" HOT WATER, AND 3/4" CONDENSATE DRAIN DOWN.
- 8 1" HOT WATER DOWN.
- 9 ROUTE SANITARY AND VENT TO FLOOR DRAIN, ED, FROM SANITARY RISER #61 AND VENT RISER #61. REFER TO RISER DIAGRAM FOR MORE INFORMATION.
- 10 ROUTE 1/2" COLD WATER, 1/2" HOT WATER, AND 2" SANITARY LOW IN WALL TO SERVE P-7.
- 11 SANITARY PIPING TO UNIT IL-EL 3029. REFER TO RISER DIAGRAM FOR MORE INFORMATION.
- 12 SANITARY PIPING TO UNIT IL-EL 3030. REFER TO RISER DIAGRAM FOR MORE INFORMATION.
- 13 VENT DOWN TO SERVE UNIT AL-B1 2236. REFER TO RISER DIAGRAM FOR MORE INFORMATION.
- 14 3/4" CONDENSATE DRAIN DOWN.
- 15 COMBINATION BALANCING/SHUT-OFF VALVE. BALANCE TO 0.5 GPM.

Order Plans @

WWW.ONLINE.COM

