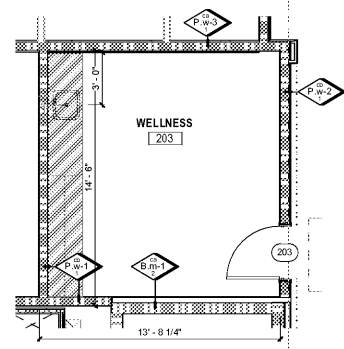


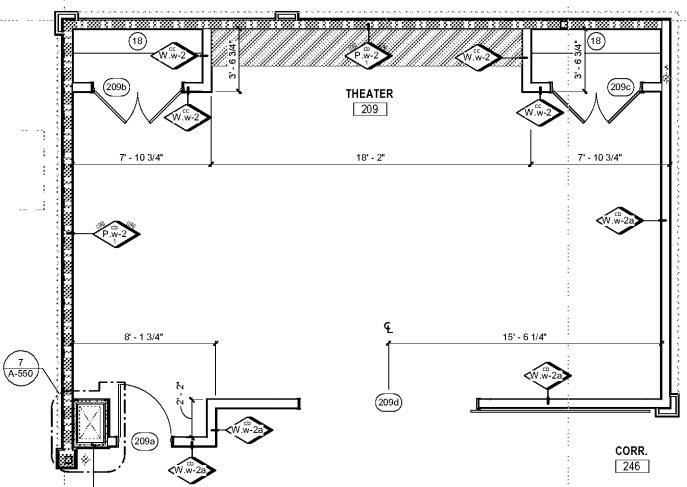
ENLARGED PLAN GENERAL NOTES

- DO NOT SCALE DRAWINGS
- GRID LINES INDICATED WITH A SQUARE ARE TO FACE OF WOOD STUD
- GRID LINES INDICATED WITH A CIRCLE ARE TO CENTERLINE OF STEEL
- ALL STEEL TUBES ARE TO BE PLACED AT CENTERLINE OF WOOD STUD WALL, U.N.O.
- REFER TO ENLARGED PLANS FOR STEEL COLUMN AND TUBE LOCATIONS
- DIMENSIONS ARE TAKEN TO CENTERLINE OF COLUMNS (AT STEEL GRID LINES), F.O. MASONRY, F.O. STUD WALL, F.O. CONCRETE, CENTERLINE OF DEMISING WALL, CORRIDOR SIDE OF CORRIDOR STUD, CENTER OF OPENING IN STUD WALLS, MASONRY OPENINGS IN MASONRY WALLS, U.N.O.
- SINGLE DOORS SHOULD BE LOCATED 4" FROM THE ADJACENT CORNER U.N.O.
- PROVIDE ACOUSTICAL SEALANT ALONG ENTIRE PERIMETER OF GYPSUM WALL BOARD FOR ALL INTERIOR WALLS
- DO NOT LOCATE OUTLETS, LIGHT SWITCHES, CABLE TELEVISION, TELEPHONE, DATA OR SIMILAR JUNCTION BOXES BACK-TO-BACK IN WALLS BETWEEN DWELLING UNITS AND CORRIDORS / COMMON SPACES (IN THE SAME STUD CAVITY). WHERE NECESSARY TO LOCATE BOXES BACK-TO-BACK, USE A MATERIAL SUCH AS 3M MPP-45 BEHIND THE BOX OR USE STC SOUND CONTROL STC BOX SEAL BETWEEN THE OUTLET AND THE FACE PLATE
- PROVIDE ACOUSTICAL SEALANT BETWEEN JUNCTION BOXES AND GYPSUM WALL BOARD AT ALL UNIT DEMISING AND CORRIDOR WALLS.
- NO PLUMBING PIPES SHALL CONTACT ANY CEILING BOARDS OR STRUCTURAL ELEMENT SUCH AS WOOD TRUSSES.
- PROVIDE ACOUSTICAL SEALANT OF ALL PIPE PENETRATIONS OF WALLS AND FLOOR-CEILING ASSEMBLIES SEPARATING DWELLING UNITS AND COMMON SPACES INCLUDING TOILET PIPE PENETRATIONS OF THE FLOORS.

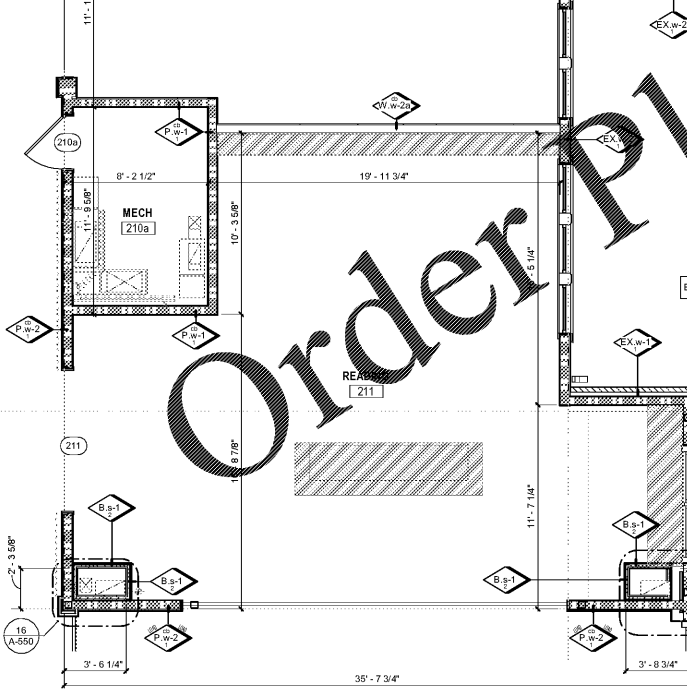
HATCHED AREA REPRESENTS INTERIOR MILLWORK; SEE INTERIORS DRAWINGS



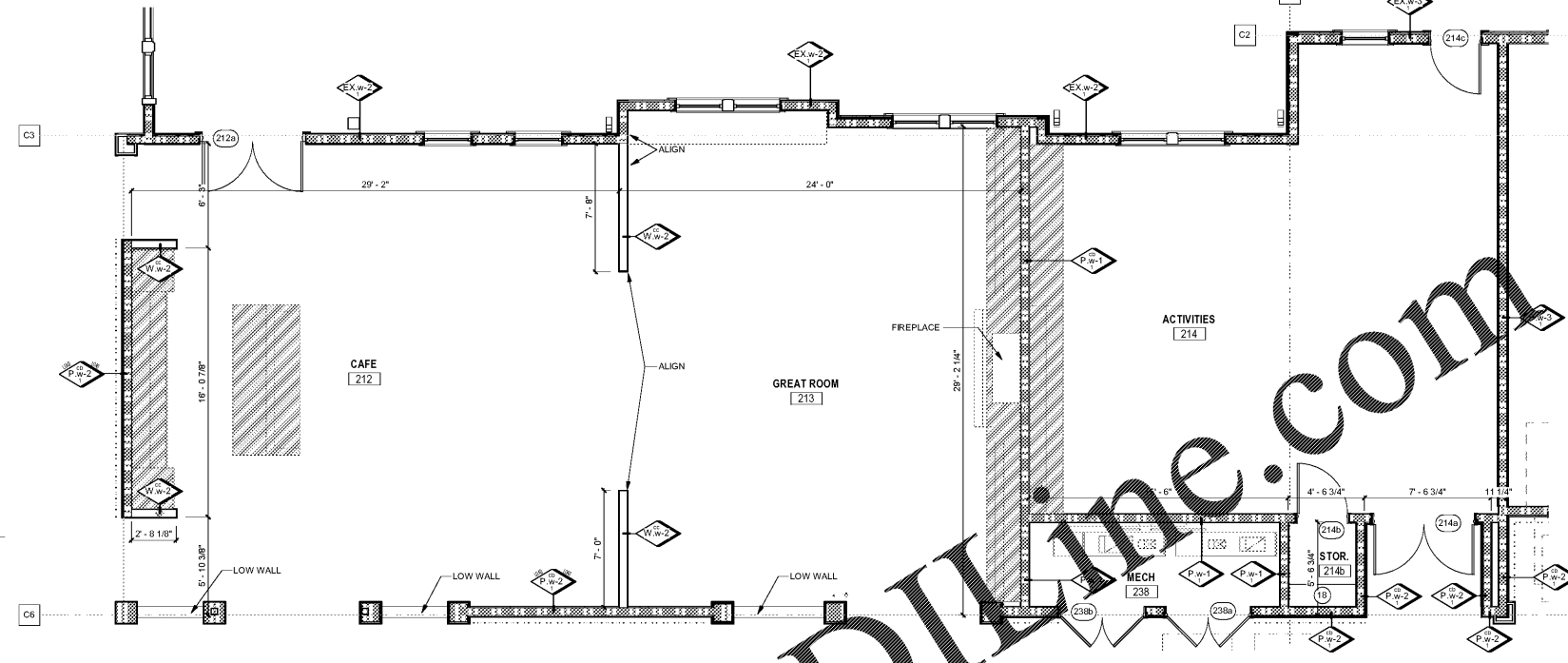
4 LEVEL 2 - WELLNESS AREA  
1/4" = 1'-0"



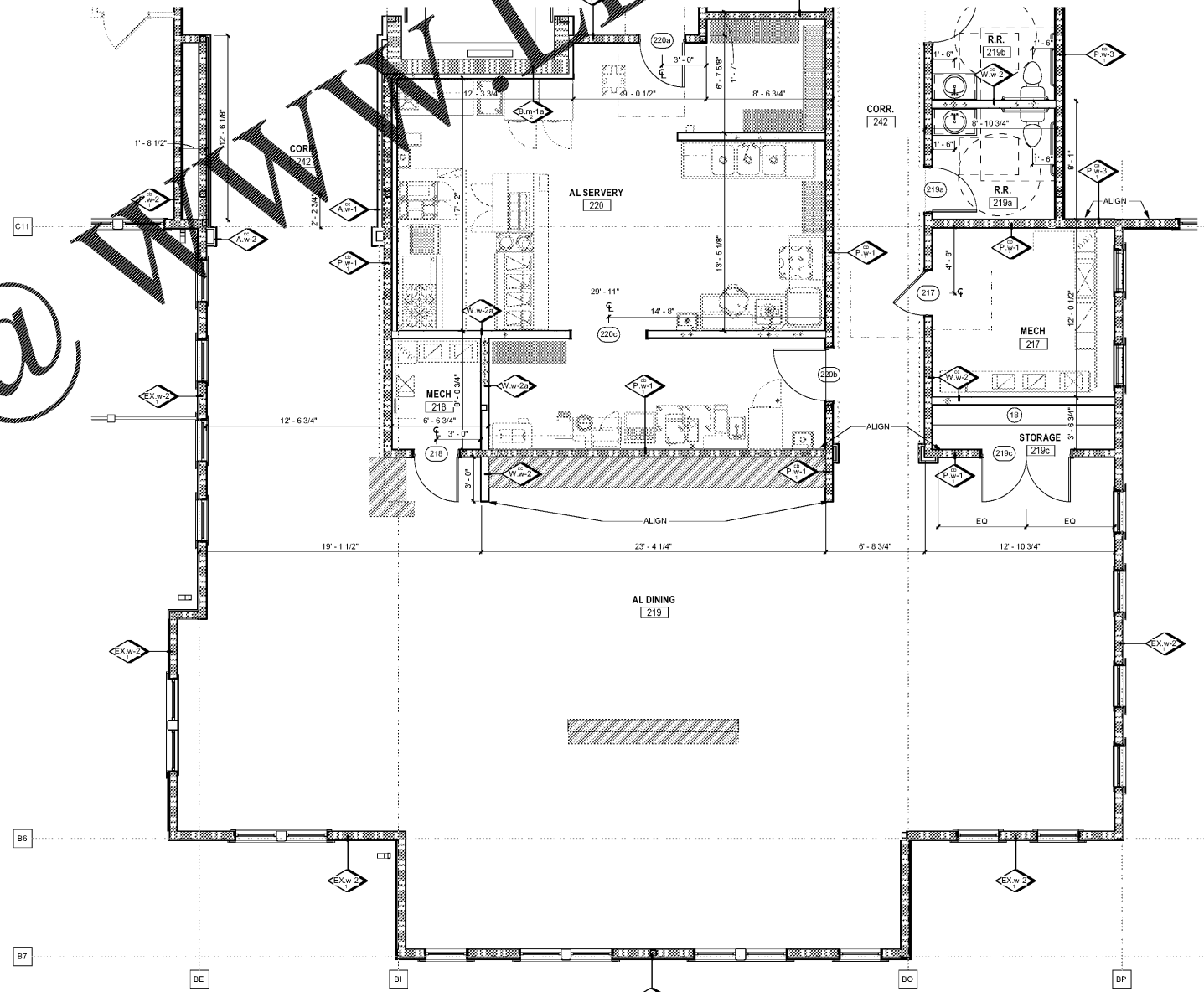
7 LEVEL 2 - ASSISTED LIVING ACTIVITY SPACES  
1/4" = 1'-0"



2 LEVEL 2 - ASSISTED LIVING AMENITY SPACES  
1/4" = 1'-0"



1 LEVEL 2 - ASSISTED LIVING ACTIVITY SPACES  
1/4" = 1'-0"



3 LEVEL 2 - ASSISTED LIVING DINING  
1/4" = 1'-0"

Order Plans @



architect / designer  
**BCT ARCHITECTS**  
100 North Charles Street, 18th floor  
Baltimore, MD 21201  
410.837.2727  
www.bctarchitects.com

structural engineer  
**CARROLL ENGINEERING, INC.**  
215 Shilling Circle, Suite 102  
Hunt Valley, MD 21031  
410.785.7423  
www.carrolleengineering.com

mep engineer  
**KIBART, INC.**  
301 Dutaney Valley Road, Suite 301  
Towson, MD 21284  
410.454.1111  
www.kibart.com

civil engineer  
**DENNIS CORPORATION**  
1800 Hager Street  
Columbia, SC 29201  
803.360.6666  
www.denniscorporation.com

landscape architect  
**LAND DESIGN, LLC**  
200 South Peyton Street  
Alexandria, VA 22314  
703.540.7704  
www.LandDesign.com

interior designer  
**AMEN ASNER**  
100 North Charles Street, Suite 910  
Baltimore, MD 21201  
410.837.2767  
www.amenasner.com

code + life safety consultant  
**KOFFEL ASSOCIATES, INC.**  
8815 Centre Park Dr., Suite 200  
Columbia, MD 21045  
410.794.6110  
www.koffel.com

project  
DHEC Project Number #: 637063

**BEES FERRY SENIOR LIVING**  
3097 Bees Ferry Road  
Charleston, South Carolina 29414

client / owner  
**3097 BEES FERRY ROAD, LLC**  
3535 Colonel Vanderhulst Circle  
Mount Pleasant, SC 29466  
1.843.296.3985

seal / signature

revisions

No.	Date	Title

ENLARGED PLANS

Issue date 10/18/2019

sheet number

**A-304**