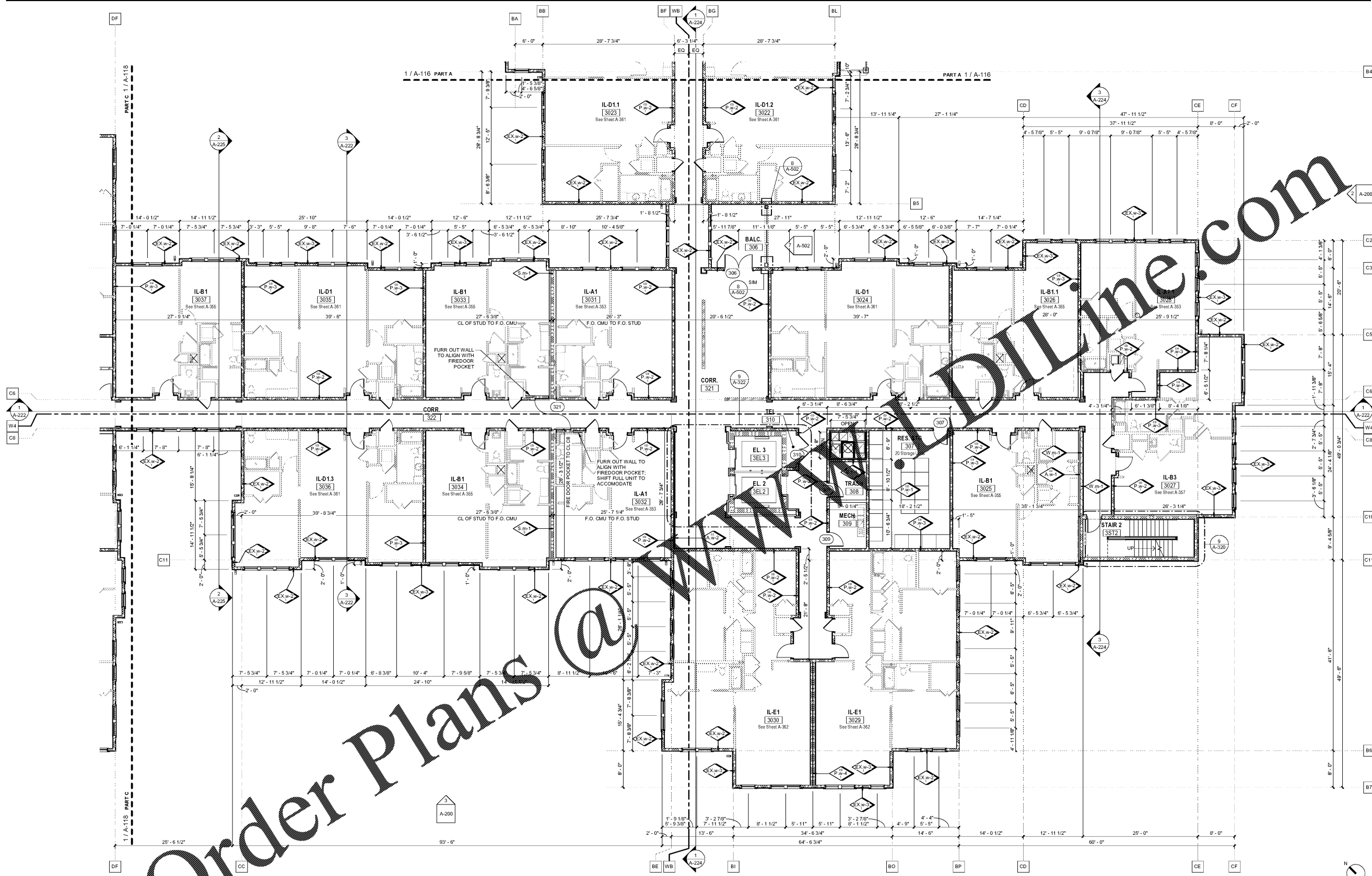


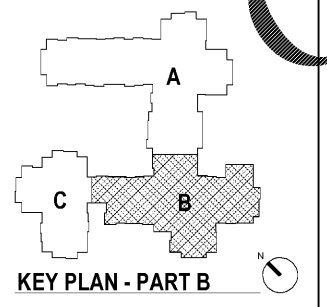
No.	Date	Title



PART PLAN GENERAL NOTES

- DO NOT SCALE DRAWINGS
 - GRID LINES INDICATED WITH A CIRCLE ARE TO FACE OF WOOD STUD
 - GRID LINES INDICATED WITH A SQUARE ARE TO CENTERLINE OF STEEL
 - ALL STEEL TUBES ARE TO BE PLACED AT CENTER LINE OF WOOD STUD WALL, U.N.O.
 - REFER TO ENLARGED PLANS FOR STEEL COLUMN LOCATIONS
 - DIMENSIONS ARE TAKEN TO CENTERLINE OF COLUMNS (AT STEEL GRID LINES), F.O. MASONRY, F.O. STUD WALL, F.O. CONCRETE, CENTERLINE OF DEMISING WALL, CORRIDOR SIDE OF CORRIDOR STUD, CENTER OF OPENING IN STUD WALLS, MASONRY OPENINGS IN MASONRY WALLS, U.N.O.
 - SINGLE DOORS SHOULD BE LOCATED 6" FROM THE ADJACENT CORNER U.N.O.
 - SECTION MARKERS WILL ALSO BE USED TO DEMONSTRATE ELEVATIONS
 - DOOR TAGS AND WALL TAGS WILL BE SHOWN WITHIN ENLARGED FLOOR PLANS U.N.O.
 - PROVIDE ACOUSTICAL SEALANT BETWEEN JUNCTION BOXES AND GYPSUM WALL BOARD AT ALL UNIT DEMISING AND CORRIDOR WALLS
 - NO PLUMBING PIPES SHALL CONTACT ANY CEILING BOARDS OR STRUCTURAL ELEMENT SUCH AS WOOD TRUSSES
 - GRIPPABLE HANDRAILS SHALL BE PROVIDED ON AT LEAST ONE SIDE OF EACH CORRIDOR/HALLWAY IN ACCORDANCE WITH SC R61-84. SEE INTERIOR DESIGN DRAWINGS FOR DETAIL/PROFILE
- HATCHED AREA REPRESENTS INTERIOR MILLWORK; SEE INTERIORS DRAWINGS

THIRD FLOOR PLAN - PART B
 1/8" = 1'-0"



Order Plans @ [email]